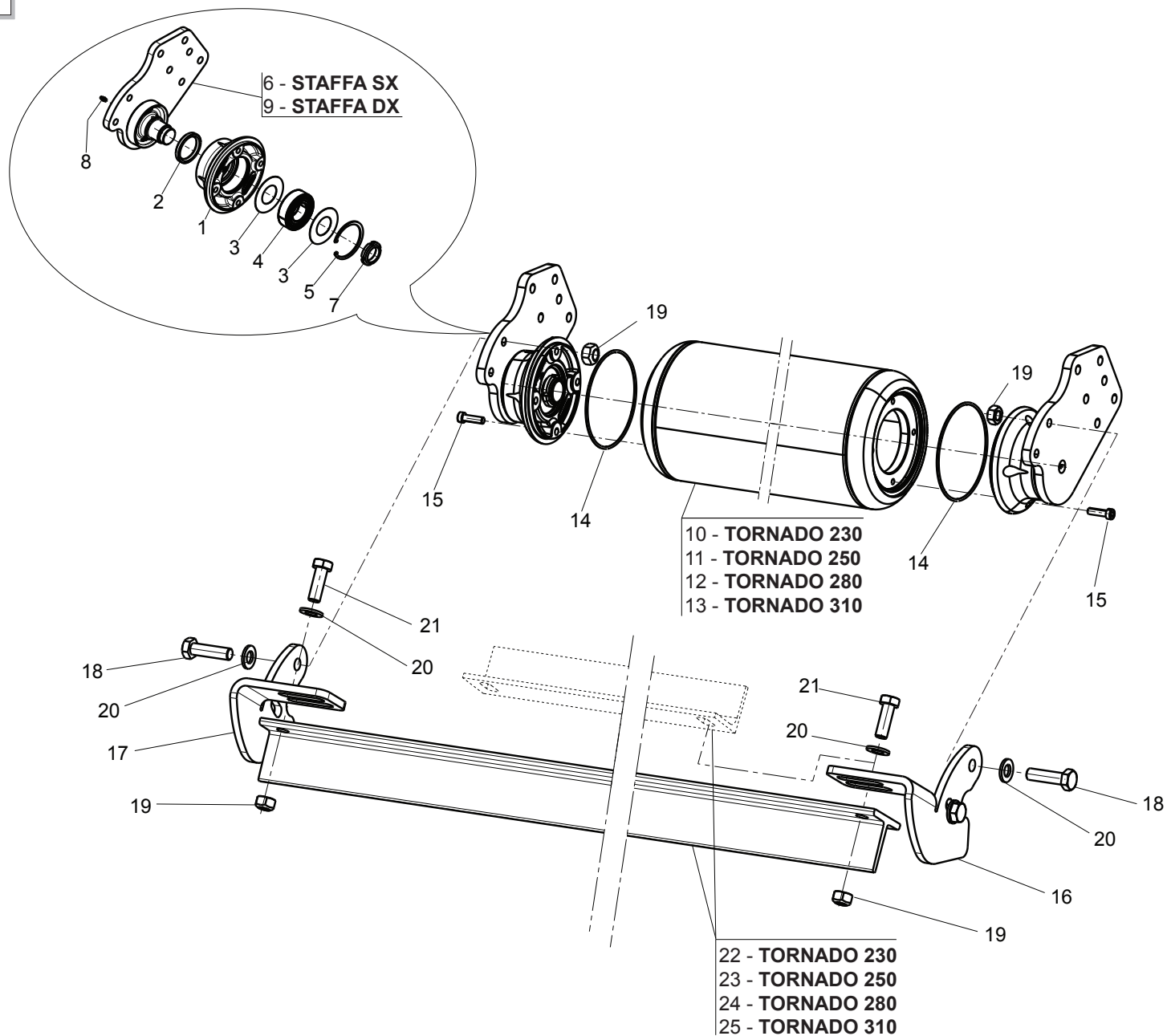


TAV. 040



RULLO / ROLLER

TAV. 040

Pos.	Cod.	Descrizione	Description	Benennung	Description	Description
1	M30400607	SUPPORTO CUSCINETTO RULLO	ROLLER BEARING SUPPORT	0	0	0
2	F03010160	ANELLO T.A. 50X 65X 8 D3760NBR	OIL SEAL 50X65X8	PARE-HUILE 50X65X8	OELABDICHTUNG 50X65X8	PARA-ACEITE 50X65X8
3	M30400617	ROSETTA SPES. D=80 D=42 0,5	WASHER SPACER D=80 D=42 0,5	0	0	0
4	F04010327	CUSC.D40 D80 B23 62208 2RS1	BEARING D40 D80 B23 62208 2RS2	0	0	0
5	F02050425	ANELLO E. DI 80X 2,5 U7437 C70	SEEGER RING D.80	BAGUE SEEGER D.80	SEEGERRING D.80	ANILLO SEEGER D.80
6	M27700612	STAFFA RULLO SX CARP.NO SUPP.	ROLLER ARM	0	0	0
7	F02010022	GHIERA AU.GUK M35X1,5 T.4H ZN	SELF LOCKING NUT M35X1,5	COLLIER AUTOBL. M35X1,5	SELBSTSP. NUTMUTTER M35X1,5	VIROLA AUTOBL. M35X1,5
8	F01100011	ING.M 6X1 7663-A 9SMNPB28 ZN	GREASE NIPPLE M6X1 7663-A ZN	GRAISS. A BILLE M6X1 7663A ZN	SCHMIERBUECHE M6X1 7663-A ZN	ENGRAS. DE ESFE. M6X1 7663-AZN
9	M27700611	STAFFA RULLO DX CARP.NO SUPP.	ROLLER ARM	0	0	0
10	M27723606	RULLO POSTERIORE MOD.230	REAR ROLLER D=219.1	0	0	0
11	M27725606	RULLO POSTERIORE MOD.250	REAR ROLLER D=219.1	0	0	0
12	M27728606	RULLO POSTERIORE MOD.280	REAR ROLLER D=219.1	0	0	0
13	M27730606	RULLO POSTERIORE MOD.300	REAR ROLLER D=219.1	0	0	0
14	F03010758	ANEL. OR 148,82X3,53 NBR 70	GASKET OR 148,82X3,53 NBR 70	BAGUE OR 148,82X3,53 NBR 70	RING OR 148,82X3,53 NBR 70	ANILLO OR 148,82X3,53 NBR 70
15	F01040110	VITE M10X1,25X35 U5931 8.8ZN	SCR. M10X1,25X35 U5931 8.8ZN	VIS M10X1,25X35 U5931 8.8 ZN	SCHRAUBE M10X1,25X35 U5931 8.8	TORNILLO M10X1,25X35 U5931 8.8
16	M31400631	STAFFA RASCHIATERRA DX	SCRAPER CLAMP DX	0	0	0
17	M31400632	STAFFA RASCHIATERRA SX	SCRAPER CLAMP DX	0	0	0
18	F01010053	VITE M12X1,25X45 U5738 8.8ZN	SCR. M12X1,25X45 U5738 8.8ZN	VIS M 12X1,25X45	SCHRAUBE M 12X1,25X45	TORNILLO M 12X1,25X45
19	F01220047	DADO M12X1,25 D980 8ZN	NUT M12X1,25 D980 8ZN	ECROU M12X1,25 D980 8 ZN	MUTTER M12X1,25 D980 8 ZN	TUERCA M12X1,25 D980 8 ZN
20	F01410076	ROS.M12 13X 24X2,5 U6592 ZN	WASHER 12 13X 24X2,5 U6592 ZN	RONDEL. M12 13X24X2,5 U6592 ZN	SCHEIBE M12 13X24X2,5 U6592 ZN	ARANDELA M12 13 X24X2,5 ZN
21	F01010288	VITE M12X1,25X35 U5740 8.8ZN	SCR. M12X1,25X35 U5740 8.8ZN	VIS M12X1,25X35 U5740 8.8 ZN	SCHR.M12X1,25X35 U5740 8.8 ZN	TORN.M12X1,25X35 U5740 8.8 ZN
22	M27723618	#N/A!	#N/A!	#N/A!	#N/A!	#N/A!
23	M27725618	#N/A!	#N/A!	#N/A!	#N/A!	#N/A!
24	M27728618	#N/A!	#N/A!	#N/A!	#N/A!	#N/A!
25	M27731618	#N/A!	#N/A!	#N/A!	#N/A!	#N/A!