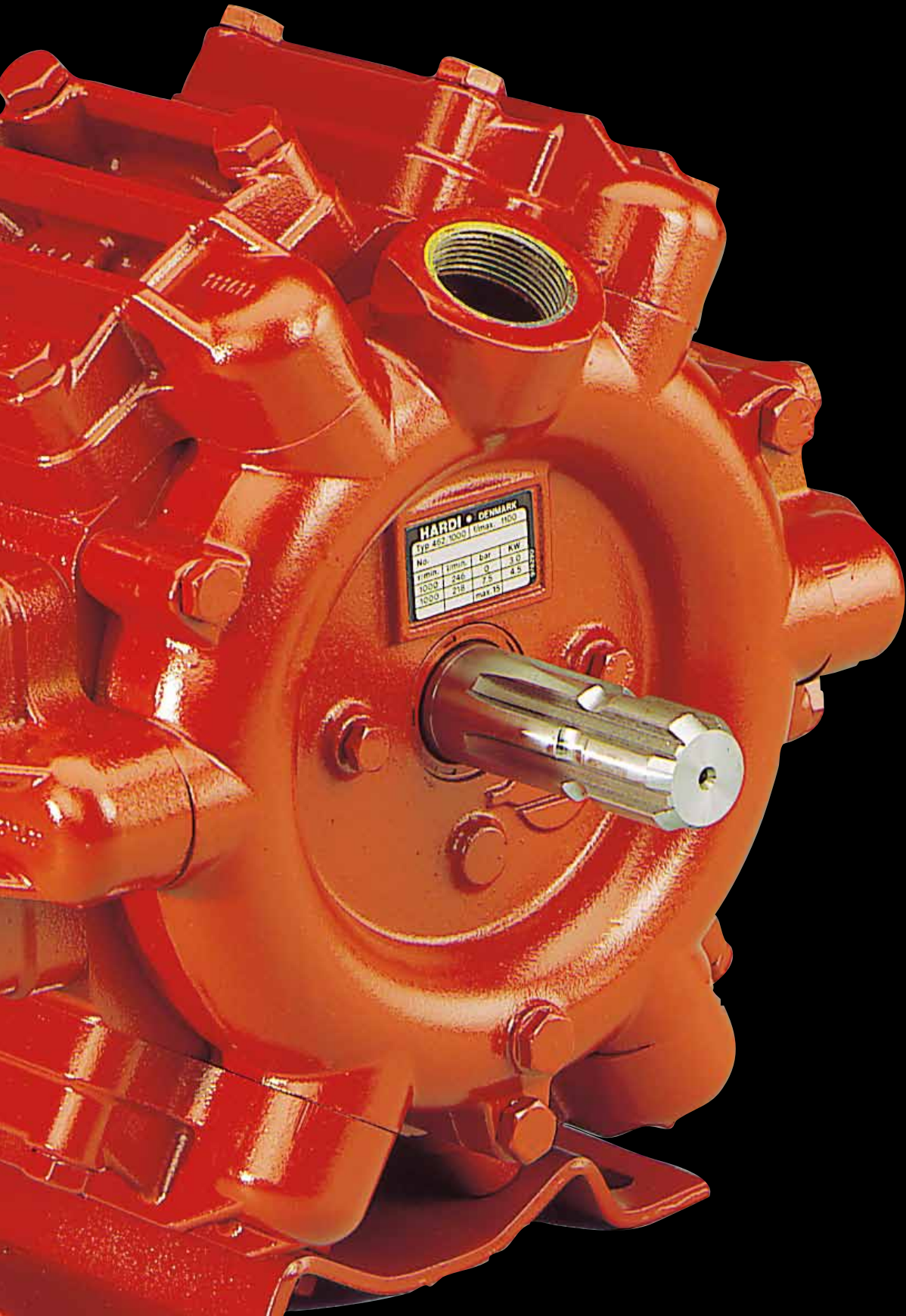




HARDI COMPONENT GUIDE



HARDI Component guide



Your Sprayer Specialist

Contents

Calibration.....	3
Control units.....	4
Controllers & accessories	5
Droplegs	6
Hose.....	7
Hose reels and accessories	7
Filters.....	8
Fittings.....	9
Foam Markers.....	11
Flush Nozzle.....	12
Liquid mixing & transfer equipment	12
Nozzles	13
HARDI ISO reference number for nozzles.....	14
Pressure gauges	14
Pumps	15
HARDI pump 503	16
HARDI pump 603	18
HARDI pump 321	20
HARDI pump 1203	22
HARDI pump 1303	24
HARDI pump 363	26
HARDI pump 463	28
HARDI hot liquid pump	30
Spray lines	32
Spray guns.....	33
Tanks	33
Valves	34

For more than 50 years, the basic philosophy of HARDI INTERNATIONAL has been the development, design and manufacture of sprayers and spraying equipment for the application of plant protection products. The success of this philosophy is reflected in the sales of HARDI products in over 100 countries, many of which have specific needs. HARDI has become a specialist in liquid systems and this Components Guide shows the comprehensive range.

Calibration



Field sprayer kit

A quality kit for calibration is indispensable when using application equipment for quick and easy calculations of application rate, speed, ISO nozzle size and pressure.

Features:

- Robust 2 litre jug,
- Spray technique booklet
- Cleaning tool
- Nozzle Calibrator disc

Field sprayer kit, metric

Part no.

818492



Calibrator disc only, metric

285802

Calibrator disc only, US

285721

Mistblower and Backpack

Mistblower Calibrator disc, metric

Backpack sprayer kit: 10 pcs. KALIBOTTLE

284554

893212



Spray Test Paper

A quick and easy way to evaluate drop coverage and penetration. It turns blue upon contact to liquid. Pictogram instructions with drop count indicator are included.

Bag with 50 pieces 2.5 cm x 7.5 cm paper

893211

Control units



M-600

Brass control unit with pressure gauge and pulsation dampers. Suitable for direct attachment to pump.

M-600
 Inlet: 3/4"
 Outlet: 1/2"
 Bypass: 3/4"
 Max. pressure: 15 bar
 Pressure gauge: Dual scale glycerine dampened, 63 mm diameter

Part no.

727862



M-70

Control unit with pressure gauge made of hard wearing synthetic materials for long life and chemical resistance.

M-70
 Inlet: 1"
 Outlet: 2 x 1/2"
 Bypass: 1"
 Max. pressure: 15 bar
 Pressure gauge: Dual scale glycerine dampened, 63 mm diameter

841013



BK

Control unit with section valves and HARDI-MATIC proportional valve. Ideal for field sprayers.

Features:

- Control of main valve
- Equipped with three valve sections
- Pressure equalization device maintaining the same pressure when the valve is turned off
- Pressure agitation valve for effective agitation
- Easy to read, dual scale pressure gauge
- HARDI-MATIC volumetric valve for constant application rate even with speed variations within the same gear
- Pressure filter with 50 mesh net
- 15 bar safety valve.

BK with 3 sections
 Inlet: 1"
 Outlet: 3 x 3/4"
 Bypass: 1"
 Pressure agitation: 1/2"
 Max. pressure: 15 bar
 Pressure gauge: Dual scale glycerine dampened, 63 mm diameter

841902

Control units



EVC

Remote controlled units utilize 12 Volt motorized valves (not solenoid) to operate the spray functions. It is the best choice for maximum operator comfort and safety.

Features:

- Remote control of main ON/OFF function
- Three or five section valves
- HARDI-MATIC volumetric pressure regulation valve for constant application rate even with speed variations within the same gear
- Equalization device maintaining the same pressure when section valve is turned off
- Remote control box with five metre of cable
- Pressure agitation valve
- Large, easy to read, stainless steel, glycerine dampened pressure gauge
- Note: The HARDI Self-Cleaning filter or a 15 bar safety valve must also be fitted

<i>EVC with 3 section</i>	840193
<i>EVC with 5 section</i>	840195
Inlet: 1"	
Outlet: 3/4"	
Bypass: 1"	
Pressure agitation: 1/2"	
Max. pressure: 15 bar	
Pressure gauge: Dual scale, 100 mm diameter	

Part no.

Controllers & accessories



HM 1500 & HC 2500

Genuine HARDI Controller for spraying. It measures and displays travel speed, application rate, total sprayed liquid, total treated area, etc. It is easy add-on to the HARDI EVC control unit. The transducers based on solid state electronics. HM 1500 will monitor application rate and HC 2500 will control application rate.

Features:

- Full integration with EVC control unit
- Compact two line display with back-light
- Simple four button control
- Only one connection cable to control box

<i>HM 1500 Monitor</i>	840165
<i>HC 2500 Controller</i>	840166
<i>Transducer kit for EVC</i>	840169

<i>Tractor mount kit, two pole</i>	72236500
--	----------

Controllers & accessories



HC 5500

HARDI Controller for controlling spray application. The large four line display is very informative with both icons and text. It is easy add-on to the HARDI EVC control unit and can be used for GPS applications. HC 5500 can send data to a printer or a computer. The transducers based on solid state electronics.

Features:

- Full integration with EVC control unit
- Large four line display with back-light
- Preset buttons for most used readouts
- GPS compatible
- Printer compatible
- Only one connection cable to control box

<i>HC 5500 Controller</i>	840167
<i>Transducer kit for EVC</i>	840169
<i>Tractor mount kit, three pole</i>	72050000



Pressure transducer

Solid state transducer for digital readout of pressure. Pressure range is from 0 to 10 bar. Reliable signal technique based on amp readout and the kit caters for 1/2" and 3/4" hose

<i>Pressure transducer 0-10 bar</i>	842022
---	--------



Pedal ON/OFF switch

The pedal remote switch is an option for the HC 5500. It allows the operator to operate the main ON/OFF via the foot switch.

<i>Pedal ON/OFF for HC 5500</i>	72173800
---	----------



Printer

The printer is an option for the HC 5500 and permits hard copies of stored data.

<i>Printer</i>	72173600
<i>Printer paper (2 roll)</i>	741727

Droplegs



DROP NOZZLE

Snap-on drop-leg designed for spraying low dense crops up under the leaves. It has strong synthetic dropper tube with two nozzle holders. Suitable for 1553 series nozzles (nozzles not included).

Features:

- Easily adjusted nozzle angles
- Tube length is 60 cm
- Supplied with 40 cm feed hose with SNAP-FIT adapter and 3/8" cap
- Snap Lock mounting bracket for boom

<i>DROP NOZZLE Pack with 5 units</i>	834281
--	--------

Hose



HARDI hose is suitable for working with pesticides. The hose is also available in rolls.

Features:

- Reinforced fibre braid pressure hose
- PVC or rubber material
- For pressure hose, working pressure up to 25 bar
- Spiral reinforced suction hose to prevent collapse

Pressure hose, PVC, per metre

<i>1/2" Black</i> ······	927269
<i>3/4" Black</i> ······	927270

Pressure hose, Rubber, per metre

<i>1/2" Black, BP 60</i> ······	927021
<i>3/4" Black BP 60</i> ······	927032
<i>1" Black BP 60</i> ······	927124

Suction hose, per metre

<i>3/4" Black, BP 20</i> ······	92738700
<i>1" Black, BP 20</i> ······	92738800
<i>1 1/4" Black, BP 18</i> ······	92738900
<i>1 1/2" Black, BP 18</i> ······	92739000
<i>2" Black, BP 18</i> ······	92739100
<i>2 1/2" Black, BP 18</i> ······	92739200

Part no.

Hose reels and accessories



The HARDI hose reel range comes in 25 and 50 metre versions. There is a range of mounting brackets to suit your needs. See also section on spray guns.

Features:

- Metallic construction
- Synthetic bushes to ease winding
- Quality braded hose in 3/8" or 1/2"
- Working pressure up to 25 bar

Hose reel 25 m

Complete with brackets and S60 spray gun	
<i>For MASTER PRO</i> ······	72332800
<i>For MASTER MB & NK</i> ······	72332900
<i>For MASTER HAL</i> ······	72385300

Hose reel 50 m

<i>Hose reel</i> ······	818377
<i>50 m 3/8" hose</i> ······	835321
<i>50 m 1/2" hose</i> ······	835332
<i>Model S60 Spray gun</i> ······	843196

See also *Spray guns*

Filters



In-Line Filter

This bowl type filter is typically fitted to each boom line. It is easy to dismantle due to the radial sealing system making it quick to clean. It is available in different mesh sizes, the higher the number, the finer the mesh.

Features:

- 1/2" or 3/4" hose
- Colour coded filter
- 50 (Blue), 80 (Red) or 100 (Yellow) mesh

50 mesh for 1/2" hose	845205
80 mesh for 1/2" hose	845206
100 mesh for 1/2" hose	845207
50 mesh for 3/4" hose	845208
80 mesh for 3/4" hose	845209
100 mesh for 3/4" hose	845210
50 mesh for 3/4" BSP thread	845218
80 mesh for 3/4" BSP thread	845219
100 mesh for 3/4" BSP thread	845220



Self-Cleaning Filter

The filter minimizes annoying downtime by continually cleaning the filter screen. A by-pass system ensures the filter screen is always clean. The housing has a large screw top for easy maintenance and inspection. Seals are highly resistance to chemicals. A 15 bar safety valve is included.

Self-Cleaning filter, 80 mesh	845193
-------------------------------	--------



Floating Filter

The specially designed floating suction filter aspirates water 15 cm under the surface thereby avoiding mud and surface weeds. Only clean water is sucked into the tank. Hose tail is 1 1/2". For trailed sprayers, 8 m of suction hose is standard and for lift it is 5 m.

Float Filter with 1 1/2" hose tail	841481
------------------------------------	--------

Part no.

Fittings



S series

The "S" series of modular components are professional fittings for liquid systems. Assembly and disassembly is quick and easy: Simply press in and secure with the "U" pin. The sealing quality is excellent due to the radial seal system. The wall flanges have a captive gasket to ease installation.

Features:

- Quick to assemble
- Excellent seal quality due to radial system
- O-ring seals are made of highly chemical resistant material
- No messy gluing or thread tape
- Easy to expand with many combinations
- Flexibility orientation
- High flow capacity (minimal internal restrictions)
- Easy to pull apart and re-usable
- Working pressure up to 15 bar
- Chemical and UV resistant materials (reinforced nylon)

Size group	Hole saw size	Hose tail size
S40	40 mm	3/8" to 1/2"
S53	53 mm	1/2" to 1"
S67	67 mm	1" to 1 1/2"
S93	93 mm	1 1/2" to 2 1/2"



Tank flange bulkhead with gasket

S40	726462
S53	726463
S67	726464
S93	726465
S93 single side	727339



Flange nut

S40	322106
S53	322107
S67	322108
S93	322109



Plug

S40	726577
S53	726578
S67	726579
S93	726580



Retaining "U" pin

S40	145994
S53	145995
S67	145996
S93	145997



Threaded reducer

S40 1/8" female	726693
S53 1/2" female	726694
S67 1" female	726695
S93 2" female	727476

Part no.

Fittings



Tail straight for pressure hose

S40 3/8"	726554
S53 1/2"	726556
S53 3/4"	726558
S53 1"	726559
S67 1"	726560
S67 1 1/4"	726561
S67 1 1/2"	726562
S93 1 1/2"	72041500
S93 2"	726563
S93 2 1/2"	726564



Tail elbow 90 degree for pressure hose

S40 3/8"	726566
S40 1/2"	726567
S53 1/2"	726568
S53 3/4"	726570
S53 1"	726571
S67 1"	726572
S67 1 1/4"	726573
S67 1 1/2"	726574
S93 2"	726575
S93 2 1/2"	726576
S93 2 1/2" with 45 degree	72072800



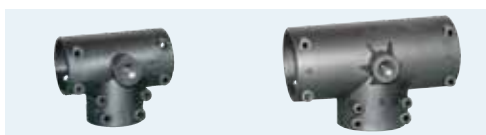
Tail straight for suction hose

S67 1 1/4"	731384
S67 1 1/2"	727223
S93 1 1/2"	728523
S93 2"	727227
S93 2" with 45 degree	72072700
S93 2 1/2"	727133



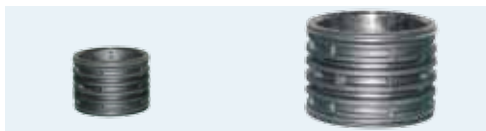
Tail elbow 90 degree for suction hose

S67 1 1/4"	731385
S67 1 1/2"	727224
S93 1 1/2"	728395
S93 2"	727225
S93 2 1/2"	727226
S93 2 1/2" with 45 degree	72072900



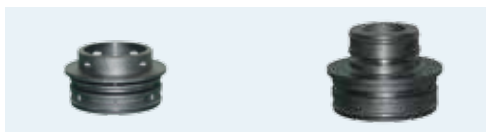
Manifold Tee

S53	322352
S67	322224
S93	334545



Manifold joiner

S53	72114300
S67	728526
S93	728525



Manifold reducer

S67 - S53 male/female	728561
S93 - S67 male/female	728562
S93 - S67 male/male	728527

Part no.

Foam Markers



Foam Marker Classic

Precision in application is increased with the marker, especially when working on bare ground. This equipment is suitable for widths up to 18 metre and all necessary hoses and fittings are included. A 12 Volt compressor in the red control box sends air to the foam solution tanks to generate the foam. The foam comes out as white blobs at the dropper units. The HARDI Foam Concentrate is non-toxic and is recommended for the HARDI Foam Markers.



Features:

- Suitable for up to 18 m width
- Two 15 litre tanks to contain up to 12 litres of foam solution
- Foam blob distance can be adjusted
- Each foam outlet can be turned on or off
- Supplied air tubes are 9 m long

<i>Foam Marker Classic</i>	827433
<i>HARDI Foam concentrate, 1 l</i>	72000300
<i>HARDI Foam concentrate, 12 x 1 l</i>	72000400



Electric Remote Foam Marker

Increased operator comfort with widths up to 28 metre is achieved with this equipment. Foam rate as well as on off function is done from the compact control box inside the tractor cabin. The high volume 12 Volt compressor is placed on the sprayer.

Features:

- Suitable for up to 28 m width
- Two 15 litre tanks to contain up to 12 litres of foam solution
- Remote control of foam blob distance and ON/OFF function
- 8 m heavy duty power supply cable standard
- 10.5 m cable for control box standard

<i>Electric Remote Foam Marker</i>	818118
<i>HARDI Foam concentrate, 1 l</i>	72000300
<i>HARDI Foam concentrate, 12 x 1 l</i>	72000400

Part no.

Flush Nozzle



Tank Flushing Nozzle

A simple and effective method to flush tanks. The rotating nozzle inside the tank flushes the tank surface with a minimal amount of water. A pressure of 4 to 5 bar is optimum for flushing.

Features:

- One nozzle for lift-mounted sprayers
- Two nozzles trailed sprayers
- Fittings for the rear nozzle on trailed permits easy installation and removal

<i>One nozzle</i>	834376
<i>Two nozzle</i>	834375
<i>One nozzle with 80 litre flush tank</i>	833348

Part no.

Liquid mixing & transfer equipment



TurboFiller

A high capacity venturi system for transferring all types of crop protection chemicals be it liquids, powders or granules to the tank. It consists of a hopper with lid, valve set and cleaning pipe.

Features:

- Cleaning pipe to wash remaining chemical
- One metre hose on cleaning pipe
- When used, it can be lowered to a natural working height
- Available in 25 and 35 litre versions
- Rotating nozzle with spike for container rinsing

<i>TurboFiller 25 for 1303 pump</i>	72595700
<i>TurboFiller 35 for 363 pump</i>	72596300



Filling Device

The equipment utilizes the pump to transfer the liquid.

Two optional suction filters are available. The floating suction filter aspirates water 15 cm under the surface thereby avoiding mud and surface weeds. Only clean water is sucked into the tank.

Hose holder is optional.

Features:

- 5 m of 1½" suction hose standard
- 3-way valve

<i>Filling Device for 503/603/1203/1303 pump</i> ..	841689
<i>1½" line filter, 30 mesh</i>	72576200
<i>Floating suction filter for filling from stream</i> ..	841481
<i>Hose holder</i>	833767



Nozzles

HARDI nozzles are precision components. They meet and often exceed stringent quality requirements and many are also rated for drift reduction. Some of the nozzles are also available in ceramic materials.



HARDI ISO F-110 Features:

- Standard all-round Flat Fan nozzle
- Superior distribution under ideal conditions
- From Fine to Very Course spray quality
- Recommended for HARDI TWIN sprayers
- Recommended from 1.5 to 5.0 bar
- Nozzle to target distance; 50 cm (min. 35 cm, max. 70 cm)
- 110° spray angle with elliptical pattern
- Made from high quality long life SYNTAL thermoplastic
- ISO standards (colour-code etc.)
- Available as ISO nozzle or ISO SNAP-FIT



HARDI ISO LD-110 Features:

- LowDrift flat fan nozzle
- Reduces drift
- From Medium to Course spray quality
- Easy to clean as the restrictor is removable
- Recommended from 1.5 to 5.0 bar
- Nozzle to target distance; 50 cm (min. 35 cm, max. 70 cm)
- 110° spray angle with elliptical pattern
- Made from high quality long life SYNTAL thermoplastic
- ISO standards (colour-code etc.)
- Available as ISO nozzle or ISO SNAP-FIT



HARDI ISO MD-110 Features:

- MINIDRIFT flat fan air inclusion nozzle
- Dramatically reduces drift
- From Medium to Very Course spray quality
- Easy to clean as the restrictor is removable
- Recommended from 1.5 to 5.0 bar
- Nozzle to target distance; 50 cm (min. 40 cm, max. 90 cm)
- 110° spray angle with elliptical pattern
- Made from high quality long life SYNTAL thermoplastic
- ISO standards (colour-code etc.)
- Available as ISO nozzle or ISO SNAP-FIT



HARDI ISO Q-110 Features:

- QUINTASTREAM nozzle for liquid fertiliser application
- Patented proportional outputs from the five holes
- Course spray quality
- Easy to clean as the restrictor is removable
- Recommended from 1.5 to 5.0 bar
- Nozzle to target distance; 50 cm (min. 35 cm, max. 100 cm)
- Directed outputs for uniform distribution
- Made from high quality long life SYNTAL and ceramics
- ISO standards (colour-code etc.)
- Available as ISO nozzle or ISO SNAP-FIT

See Nozzle product guide for other types e.g.

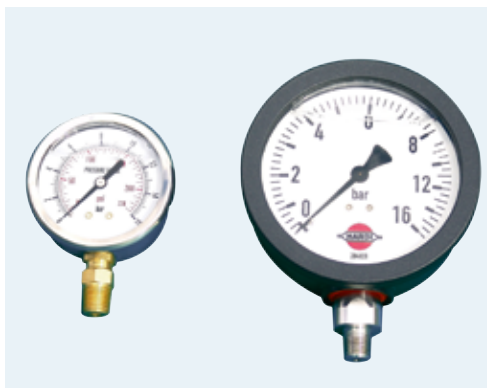
- Hollow cone nozzles
- Adjustable nozzles
- End nozzles
- Off-centre nozzles
- Reflex nozzles

See also www.hardi-nozzles.com

HARDI ISO reference number for nozzles

Qty	0075	01	015	02	025	03	04	05	06	08	10	15
F-110 COLOR TIP												
1	371964	371764	371765	371766	371950	371767	371768	371769	371770	371771	371970	-
100	831358	833089	833091	833094	831352	833096	833098	833100	833102	833105	831360	-
500	831359	833090	833093	833095	831353	833097	833099	833101	833104	833106	831361	-
LD-110 COLOR TIP												
1	-	371837	371838	371839	371958	371840	371841	371894	-	-	-	-
100	-	833120	833122	833124	831356	833127	833129	831328	-	-	-	-
500	-	833121	833123	833126	831357	833128	833130	831329	-	-	-	-
MINIDRIFT COLOR TIP												
1	-	-	372121	372122	372123	372124	372125	372126	-	-	-	-
100	-	-	74188200	74188300	74188400	74188500	74188600	74188700	-	-	-	-
QUINTASTREAM COLOR TIP												
1	-	-	372011	372012	-	372013	372014	372015	372016	372017	372018	372019
100	-	-	831373	831374	-	831375	831376	831377	831378	831379	831380	831381
F-110 COLOR TIP												
1	371963	371706	371707	371708	371946	371709	371710	371711	371712	371713	371966	-
100	741754	741755	741756	74188800	74188900	74189000	74189100	74189200	741762	741763	741764	-
500	-	-	-	741757	741758	741759	741760	741761	-	-	-	-
LD-110 COLOR TIP												
1	-	371817	371818	371819	371957	371820	371821	371893	-	-	-	-
100	-	74189300	74189400	74189500	74189600	74189700	74189800	74189900	-	-	-	-
MINIDRIFT COLOR TIP												
1	-	-	372111	372112	372113	372114	372115	372116	-	-	-	-
100	-	-	74190000	74190100	74190200	74190300	74190400	74190500	-	-	-	-
QUINTASTREAM COLOR TIP												
1	-	-	372002	372003	-	372004	372005	372006	372007	372008	372009	372010
100	-	-	741765	741766	-	741767	741768	741769	741770	741771	741772	741773
INJET COLOR TIP												
1	-	371926	371872	371873	371874	371875	371876	371927	371928	371929	-	-
100	-	831347	833143	833144	833145	833146	833147	833148	833149	831350	-	-

Pressure gauges



The HARDI quality range of easy to read pressure gauges come in 2 sizes.

Features:

- Easy to read with a split scale
- Dampened, glycerine filled
- Corrosion free stainless steel fittings

0-8/16 bar, Ø 63 mm 1/4" bottom fit	284270
0-100/200 PSI, Ø 63 mm 1/4" bottom fit	284277
0-8/16 bar, Ø 100 mm 1/4" bottom fit	284831
0-8/16 bar, Ø 100 mm 1/4" rear fit	284830

Part no.
284270
284277
284831
284830

Pumps

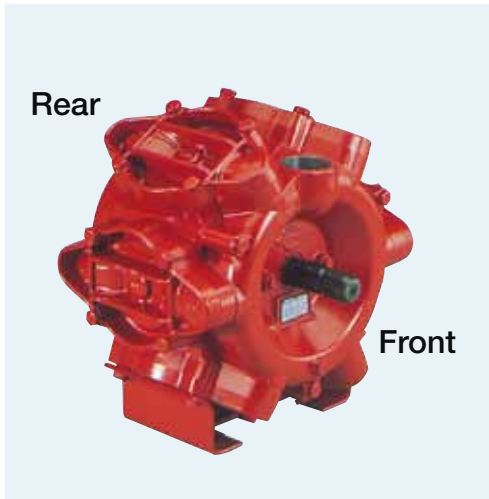


12 Volt diaphragm pumps

*LF 14, 3.8 l/min, 2.4 bar max, with demand switch
3000-501, 7.6 l/min, 4.0 bar max.*

Part no.

28050100
28084100



HARDI diaphragm pumps

HARDI diaphragm pumps with their simple construction and robust design are a very reliable pump. Capacities range from 14 to 388 l/min and pressures up to 25 bar.

Features:

- Simple construction
- Dry sump
- Very easy to maintain and service
- Self-priming
- Can be run dry
- Rotate clockwise/anti-clockwise without damage
- Choice of crankshaft type

Example

1	2	3	4	5	6	7	8
1303	9.0	- 114 / 540	- 15 bar	- C	- 1¼"	/ 1"	+ notes

1. Model
2. Stroke in millimetres
3. Capacity in l/min at 0 bar and normal r/min
4. Normal working r/min
5. Maximum pressure in bar
6. Crankshaft type: S for Spline, C for Conical, Y for Cylindrical
7. Inlet/outlet in inches
8. Notes

HARDI pump 503



General specifications

- Compact single diaphragm positive displacement pump.
- Low power consumption.
- Self-priming.
- Can be run dry.
- Can rotate clockwise or anticlockwise.
- Single grease point for lubrication.
- Dry sump to simplify maintenance.
- No special tools needed for maintenance.
- Polyurethane diaphragms and seals.
- Cast iron crankcase and covers.
- 3/4" suction port, 3/4" pressure port.
- Recommended to use HARDI suction and pressure dampers.

Part no.

503/4.0-14/800-15bar-Y-3/4"/3/4" + base 821618

- Cylindrical shaft, 25 mm / 0.98".
- For combustion and electric engine use.
- Supplied with narrow base plate.
- Normal operating revolutions, 800 r/min.
- Maximum pressure, 15 bar / 220 PSI.
- Maximum vacuum, 0.82 bar / 12.0 PSI.
- Weight, 9.0 kg / 20 lb.

503/4.0-14/800-25bar-Y-3/4"/3/4" 821026

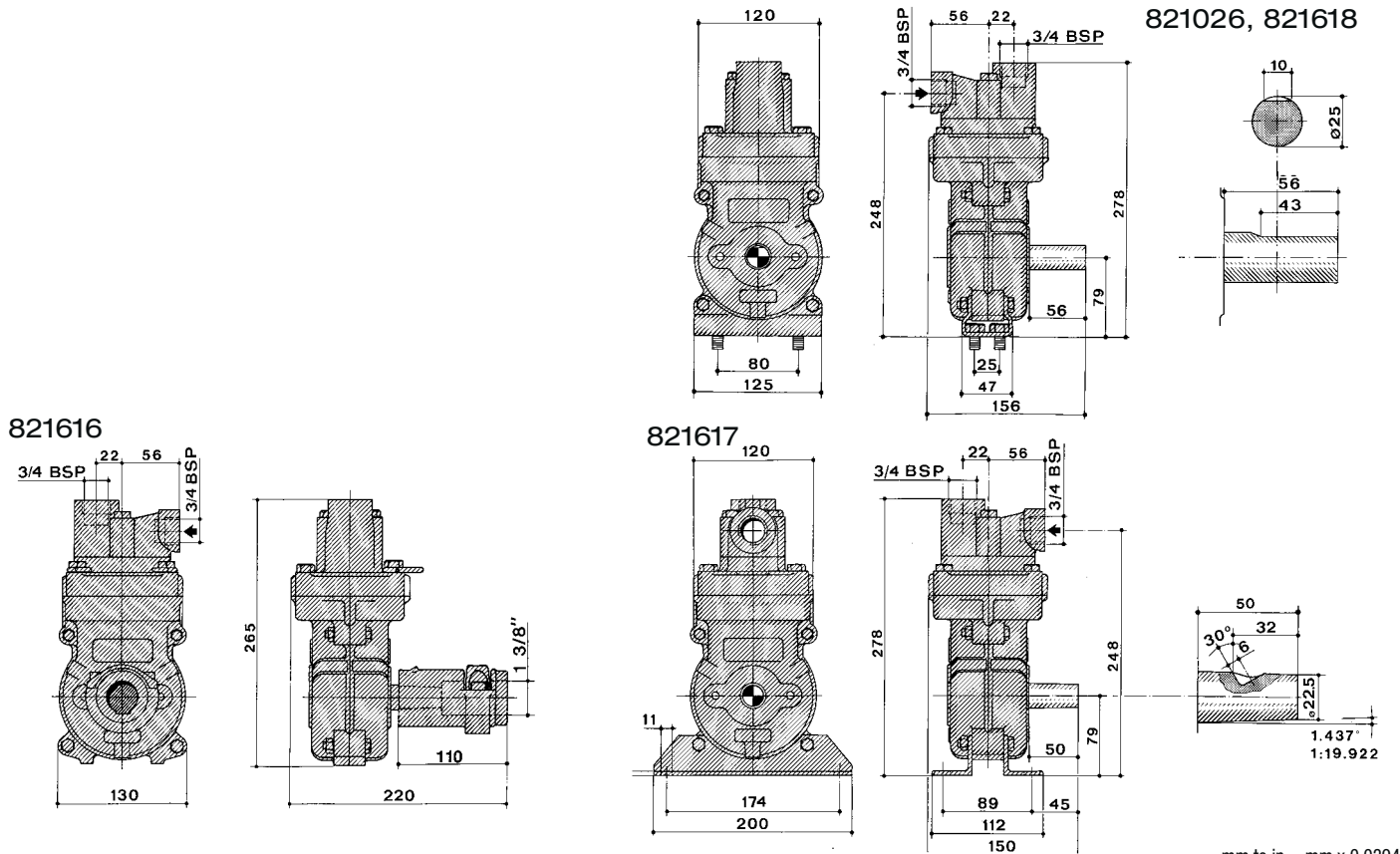
- Cylindrical shaft, 25 mm / 0.98".
- For combustion and electric engine use.
- Supplied with narrow base plate.
- Normal operating revolutions, 800 r/min.
- Maximum pressure, 25 bar / 367 PSI.
- Maximum vacuum, 0.82 bar / 12.0 PSI.
- Weight, 9.0 kg / 20 lb.

503/7.0-16/540-15bar-C-3/4"/3/4" + foot 821617

- Tapered shaft.
- For tractor use with HARDI transmission shaft.
- Supplied with wide base plate.
- Normal operating revolutions, 540 r/min.
- Maximum pressure, 15 bar / 220 PSI.
- Maximum vacuum, 0.9 bar / 13.2 PSI
- Weight, 9.2 kg / 20 lb.

503/7.0-16/540-15bar-C-3/4"/3/4" + coupling 821616

- Tapered shaft.
- With 6-splined coupling for tractor P.T.O. shaft.
- Normal operating revolutions, 540 r/min.
- Maximum pressure, 15 bar / 220 PSI.
- Maximum vacuum, 0.9 bar / 13.2 PSI
- Weight, 10.3 kg / 23 lb.

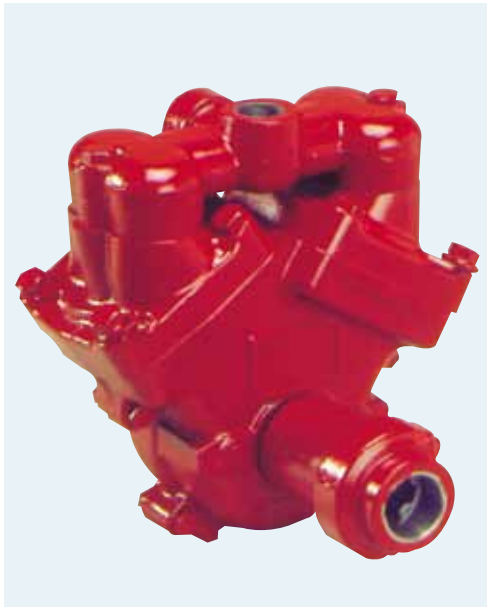


mm to in = mm x 0.0394

	r/min		300		400		500		540		600		700		800		900		1000			
	bar	l/min	kW	l/min	kW	l/min	kW	l/min	kW	l/min	kW	l/min	kW	l/min	kW	l/min	kW	l/min	kW			
503/4.0	0	5	0.1	7	0.1	9	0.2					12	0.2	13	0.3	14	0.4	16	0.5	17	0.5	
	2	5	0.1	6	0.2	8	0.2					9	0.3	10	0.4	12	0.5	13	0.5	15	0.6	
	4	4	0.2	6	0.2	7	0.3					9	0.4	10	0.4	12	0.5	13	0.6	14	0.7	
	6	4	0.2	5	0.3	7	0.4					9	0.5	10	0.5	12	0.6	13	0.7	14	0.8	
	10	4	0.2	5	0.3	7	0.5					8	0.6	10	0.7	11	0.7	12	0.8	14	0.9	
	15	4	0.3	5	0.4	7	0.6					8	0.7	9	0.8	11	0.9	12	1.0	13	1.1	
	20	4	0.4	5	0.5	7	0.8					8	0.9	9	1.0	10	1.1	12	1.1	13	1.2	
	25	4	0.5	5	0.6	6	1.0					7	1.1	9	1.2	10	1.3	11	1.3	13	1.4	
		PSI	gpm	hp	gpm	hp	gpm	hp					gpm	hp	gpm	hp	gpm	hp	gpm	hp	gpm	hp
		0	1.3	0.1	1.8	0.1	2.4	0.3					3.2	0.3	3.4	0.4	3.7	0.5	4.2	0.7	4.5	0.7
	29	1.3	0.1	1.6	0.3	2.1	0.3					2.4	0.4	2.6	0.5	3.2	0.7	3.4	0.7	4.0	0.8	
	58	1.1	0.3	1.6	0.3	1.8	0.4					2.4	0.5	2.6	0.5	3.2	0.7	3.4	0.8	3.7	0.9	
	88	1.1	0.3	1.3	0.4	1.8	0.5					2.4	0.7	2.6	0.7	3.2	0.8	3.4	0.9	3.7	1.1	
	147	1.1	0.3	1.3	0.4	1.8	0.7					2.1	0.8	2.6	0.9	2.9	0.9	3.2	1.1	3.7	1.2	
	220	1.1	0.4	1.3	0.5	1.8	0.8					2.1	0.9	2.4	1.1	2.9	1.2	3.2	1.3	3.4	1.5	
	294	1.1	0.5	1.3	0.7	1.8	1.1					2.1	1.2	2.4	1.3	2.6	1.5	3.2	1.5	3.4	1.6	
	367	1.1	0.7	1.3	0.8	1.6	1.3					1.8	1.5	2.4	1.6	2.6	1.7	2.9	1.7	3.4	1.9	
503/7.0	bar	l/min	kW	l/min	kW	l/min	kW	l/min	kW	l/min	kW	l/min	kW	l/min	kW	l/min	kW	l/min	kW	l/min	kW	
	0	9	0.1	12	0.2	15	0.3	16	0.3	17	0.4	20	0.4									
	2	8	0.2	11	0.3	14	0.4	15	0.4	16	0.5	19	0.5									
	4	8	0.2	11	0.3	14	0.5	15	0.6	16	0.6	19	0.6									
	6	8	0.3	11	0.4	13	0.7	14	0.8	16	0.8	19	0.8									
	10	8	0.4	10	0.6	13	0.9	14	1.0	16	1.0	19	1.1									
	15	8	0.5	10	0.8	13	1.3	14	1.2	16	1.4	18	1.5									
		PSI	gpm	hp	gpm	hp	gpm	hp	gpm	hp	gpm	hp	gpm	hp								
		0	2.4	0.1	3.2	0.3	4.0	0.4	4.2	0.4	4.5	0.5	5.3	0.5								
		29	2.1	0.3	2.9	0.4	3.7	0.5	4.0	0.5	4.2	0.7	5.0	0.7								
	58	2.1	0.3	2.9	0.4	3.7	0.7	4.0	0.8	4.2	0.8	5.0	0.8									
	88	2.1	0.4	2.9	0.5	3.4	0.9	3.7	1.1	4.2	1.1	5.0	1.1									
	147	2.1	0.5	2.6	0.8	3.4	1.2	3.7	1.3	4.2	1.3	5.0	1.5									
	220	2.1	0.7	2.6	1.1	3.4	1.7	3.7	1.6	4.2	1.9	4.8	2.0									

Model/stroke Pump model and pump stroke in millimetre.
 r/min Maximum revolutions per minute is indicated by the highest figure.
 Bar / PSI Maximum pressure is indicated by the highest figure.
 kW / Hp Power consumption in kilowatt and horsepower.
 l/min / gpm Capacity in litres and US gallons per minute at zero suction lift.

HARDI pump 603



General specifications

- Compact two diaphragm positive displacement pump.
- Low power consumption.
- Self-priming.
- Can be run dry.
- Can rotate clockwise or anticlockwise.
- Single grease point for lubrication.
- Dry sump to simplify maintenance.
- No special tools needed for maintenance.
- Polyurethane diaphragms and seals.
- Cast iron crankcase and covers.
- 3/4" suction port, 3/4" pressure port.
- Recommended to use HARDI suction and pressure dampers.

Part no.

603/4.0-26/800-15bar-Y-3/4"/3/4" 821625

- Cylindrical shaft, 25 mm / 0.98".
- For combustion and electric engine use.
- Supplied with narrow base plate.
- Normal operating revolutions, 800 r/min.
- Maximum pressure, 15 bar / 220 PSI.
- Maximum vacuum, 0.85 bar / 12.5 PSI.
- Weight, 14.8 kg / 33 lb.

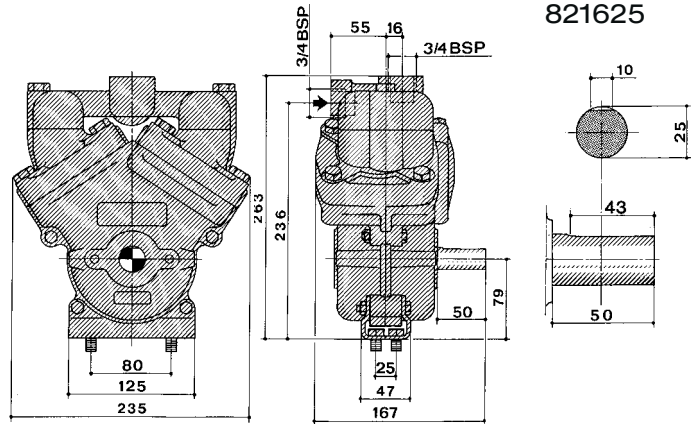
603/7.0-31/540-15bar-C-3/4"/3/4" + foot 821624

- Tapered shaft.
- For tractor use with HARDI transmission shaft.
- Supplied with wide base plate.
- Normal operating revolutions, 540 r/min.
- Maximum pressure, 15 bar / 220 PSI.
- Maximum vacuum, 0.91 bar / 13.4 PSI.
- Weight, 15.4 kg / 34 lb.

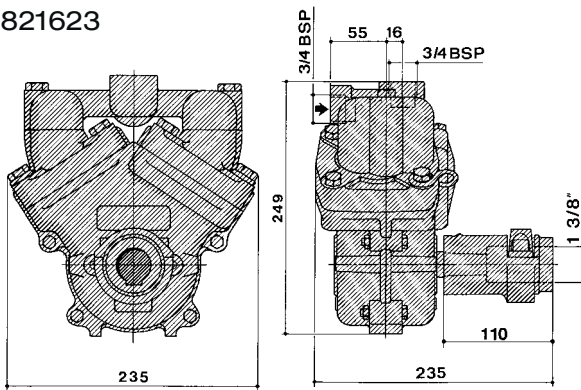
603/7.0-31/540-15bar-C-3/4"/3/4" + coupling 821623

- Tapered shaft.
- With 6-splined coupling for tractor P.T.O. shaft.
- Normal operating revolutions, 540 r/min.
- Maximum pressure, 15 bar / 220 PSI.
- Maximum vacuum, 0.91 bar / 13.4 PSI.
- Weight: 16.2 kg / 36 lb.

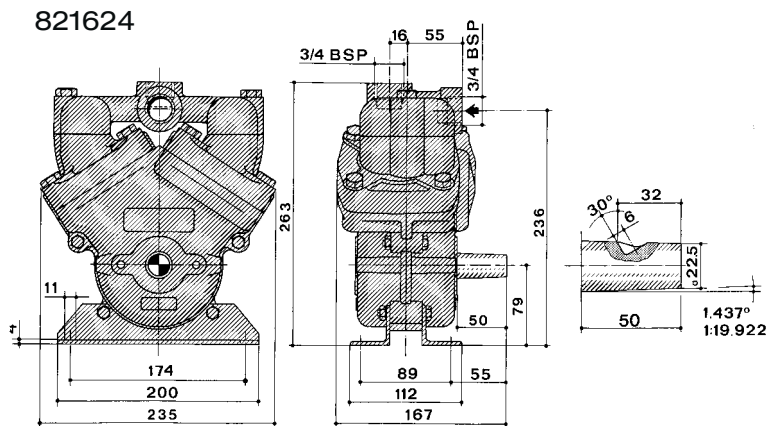
821625



821623



821624



mm to in = mm x 0.0394

Model/stroke	0		2		4		6		10		15		20		23		26		29		32		
	l/min	kW	l/min	kW	l/min	kW	l/min	kW	l/min	kW	l/min	kW	l/min	kW	l/min	kW	l/min	kW	l/min	kW	l/min	kW	
603/4.0	0	9	0.1	12	0.2	16	0.2						20	0.3	23	0.4	26	0.5	29	0.6	32	0.7	
	2	9	0.2	12	0.2	15	0.3						18	0.4	21	0.5	24	0.6	27	0.7	30	0.8	
	4	9	0.2	12	0.3	15	0.4						18	0.5	21	0.6	24	0.7	27	0.8	29	0.9	
	6	9	0.3	12	0.4	14	0.5						17	0.6	20	0.7	23	0.8	26	0.9	29	1.1	
	10	8	0.4	11	0.5	14	0.6						17	0.8	19	0.9	22	1.1	25	1.2	28	1.4	
	15	8	0.5	11	0.6	13	0.8						16	1.0	18	1.2	21	1.3	24	1.5	27	1.7	
	PSI	gpm	hp	gpm	hp	gpm	hp							gpm	hp	gpm	hp	gpm	hp	gpm	hp	gpm	hp
	0	2.4	0.1	3.2	0.3	4.2	0.3							5.3	0.4	6.1	0.5	6.9	0.7	7.7	0.8	8.4	0.9
	29	2.4	0.3	3.2	0.3	4.0	0.4							4.8	0.5	5.5	0.7	6.3	0.8	7.1	0.9	7.9	1.1
	58	2.4	0.3	3.2	0.4	4.0	0.5							4.8	0.7	5.5	0.8	6.3	0.9	7.1	1.1	7.7	1.2
88	2.4	0.4	3.2	0.5	3.7	0.7							4.5	0.8	5.3	0.9	6.1	1.1	6.9	1.2	7.7	1.5	
147	2.1	0.5	2.9	0.7	3.7	0.8							4.5	1.1	5.0	1.2	5.8	1.5	6.6	1.6	7.4	1.9	
220	2.1	0.7	2.9	0.8	3.4	1.1							4.2	1.3	4.8	1.6	5.5	1.7	6.3	2.0	7.1	2.3	
603/7.0	0	18	0.2	24	0.3	29	0.4	31	0.4	34	0.5	40	0.6										
	2	17	0.3	23	0.4	28	0.5	30	0.5	33	0.6	39	0.7										
	4	17	0.4	22	0.5	27	0.6	29	0.7	33	0.7	38	0.9										
	6	16	0.5	22	0.6	27	0.8	29	0.8	33	0.9	38	1.1										
	10	16	0.7	21	0.8	27	1.1	29	1.2	32	1.3	37	1.6										
	15	16	1.0	21	1.2	26	1.6	28	1.7	31	1.9	37	2.2										
	PSI	gpm	hp	gpm	hp	gpm	hp	gpm	hp	gpm	hp	gpm	hp										
	0	4.8	0.3	6.3	0.4	7.7	0.5	8.2	0.5	9.0	0.7	10.6	0.8										
	29	4.5	0.4	6.1	0.5	7.4	0.7	7.9	0.7	8.7	0.8	10.3	0.9										
	58	4.5	0.5	5.8	0.7	7.1	0.8	7.7	0.9	8.7	0.9	10.0	1.2										
88	4.2	0.7	5.8	0.8	7.1	1.1	7.7	1.1	8.7	1.2	10.0	1.5											
147	4.2	0.9	5.5	1.1	7.1	1.5	7.7	1.6	8.4	1.7	9.8	2.1											
220	4.2	1.3	5.5	1.6	6.9	2.1	7.4	2.3	8.2	2.5	9.8	3.0											

Model/stroke Pump model and pump stroke in millimetre.
 r/min Maximum revolutions per minute is indicated by the highest figure.
 Bar / PSI Maximum pressure is indicated by the highest figure.
 kW / Hp Power consumption in kilowatt and horsepower.
 l/min / gpm Capacity in litres and US gallons per minute at zero suction lift.

HARDI pump 321



General specifications

- Compact two diaphragm positive displacement pump.
- Supplied with base plate.
- Self-priming.
- Can be run dry.
- Can rotate clockwise or anticlockwise.
- Single grease point for lubrication.
- Dry sump to simplify maintenance.
- No special tools needed for maintenance.
- Polyurethane diaphragms and seals.
- Cast iron crankcase and covers.
- 3/4" suction port, 3/4" pressure port.
- Recommended to use HARDI suction and pressure dampers.

Part no.

321/7.0-48/540-25bar-C-3/4"/3/4" 821557

- Tapered shaft for tractor use with HARDI transmission shaft.
- Normal operating revolutions, 540 r/min.
- Maximum pressure, 25 bar / 367 PSI.
- Maximum vacuum, 0.82 bar / 12.0 PSI.
- Weight, 23.6 kg / 52 lb.

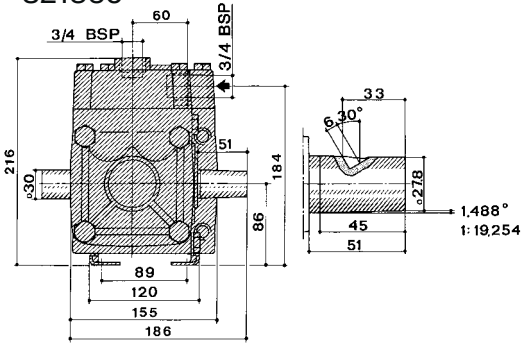
321/7.0-48/540-25bar-C/Y-3/4"/3/4" 821560

- Tapered and cylindrical shaft for tractor use with HARDI transmission shaft.
- Normal operating revolutions, 540 r/min.
- Maximum pressure, 25 bar / 367 PSI.
- Maximum vacuum, 0.82 bar / 12.0 PSI.
- Weight, 24.2kg / 53 lb.

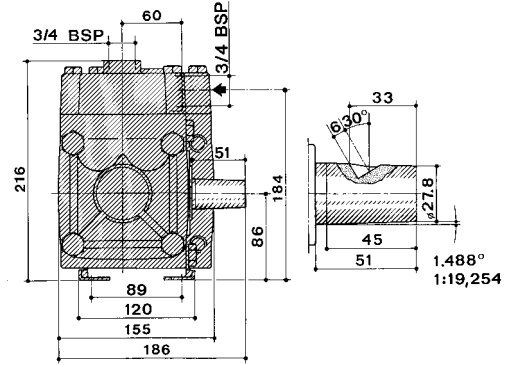
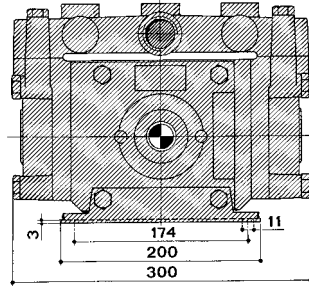
321/10.0-73/540-20bar-S/S-1"/1" + nitril diap 821607

- Spline shaft
- Normal operating revolutions, 540 r/min.
- Maximum pressure, 20 bar / 294 PSI.
- Weight, 23.9 kg / 53 lb.

821560



821557

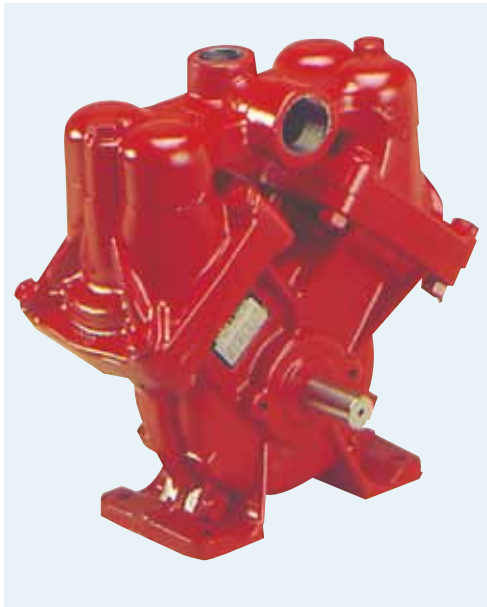


mm to in = mm x 0.0394

	r/min		300		400		500		540		600		700							
	bar	l/min	kW	l/min	kW	l/min	kW	l/min	kW	l/min	kW	l/min	kW							
321/7.0	0	26	0.2	36	0.3	45	0.4	48	0.5	54	0.6	62	0.7							
	2	25	0.3	33	0.4	42	0.6	45	0.7	50	0.8	57	1.0							
	4	24	0.4	32	0.6	41	0.8	44	0.9	48	1.1	55	1.3							
	6	24	0.6	32	0.8	40	1.1	43	1.2	47	1.4	54	1.6							
	10	23	1.0	31	1.2	39	1.6	42	1.7	47	1.9	53	2.2							
	15	23	1.5	31	2.0	38	2.2	41	2.3	46	2.5	52	3.0							
	20	22	2.3	30	2.6	38	3.2	41	3.2	45	3.4	50	3.7							
	25	22	3.0	30	3.3	37	3.6	40	4.0	44	4.3	50	4.8							
	PSI	gpm	hp	gpm	hp	gpm	hp	gpm	hp	gpm	hp	gpm	hp							
	0	6.9	0.3	9.5	0.4	11.9	0.5	12.7	0.7	14.3	0.8	16.4	0.9							
	29	6.6	0.4	8.7	0.5	11.1	0.8	11.9	0.9	13.2	1.1	15.0	1.3							
	58	6.3	0.5	8.4	0.8	10.8	1.1	11.6	1.2	12.7	1.5	14.5	1.7							
	88	6.3	0.8	8.4	1.1	10.6	1.5	11.4	1.6	12.4	1.9	14.3	2.1							
	147	6.1	1.3	8.2	1.6	10.3	2.1	11.1	2.3	12.4	2.5	14.0	3.0							
	220	6.1	2.0	8.2	2.7	10.0	3.0	10.8	3.1	12.1	3.4	13.7	4.0							
294	5.8	3.1	7.9	3.5	10.0	4.3	10.8	4.3	11.9	4.6	13.2	5.0								
367	5.8	4.0	7.9	4.4	9.8	4.8	10.6	5.4	11.6	5.8	13.2	6.4								

Model/stroke Pump model and pump stroke in millimetre.
 r/min Maximum revolutions per minute is indicated by the highest figure.
 Bar / PSI Maximum pressure is indicated by the highest figure.
 kW / Hp Power consumption in kilowatt and horsepower.
 l/min / gpm Capacity in litres and US gallons per minute at zero suction lift.

HARDI pump 1203



General specifications

- Two diaphragm positive displacement pump.
- Base plate incorporated in crankcase.
- Self-priming.
- Can be run dry.
- Can rotate clockwise or anticlockwise.
- Single grease point for lubrication.
- Dry sump to simplify maintenance.
- No special tools needed for maintenance.
- Polyurethane diaphragms and seals.
- Stainless steel diaphragm discs and bolts.
- Cast iron crankcase and covers.
- 1 1/4" suction port, 1" pressure port.
- Recommended to use HARDI suction and pressure dampers.

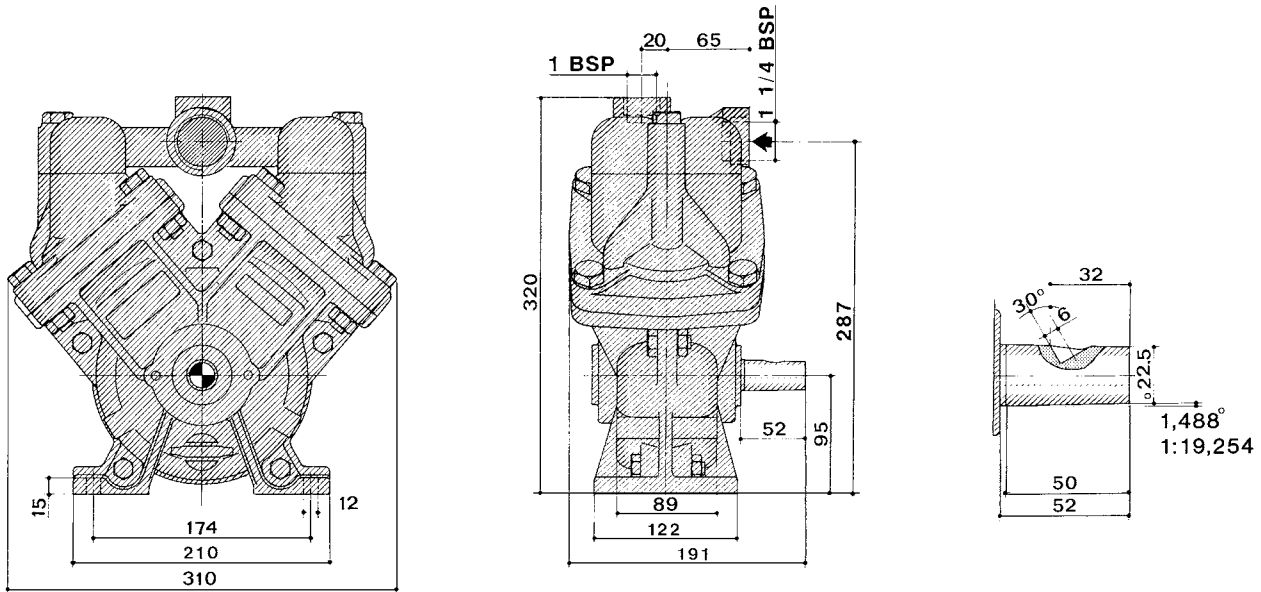
Part no.

1203/6.0-108/1000-15bar-C-1 1/4"/1" 821629

- Tapered shaft for tractor use with HARDI transmission shaft.
- Normal operating revolutions, 1000 r/min.
- Maximum pressure, 15 bar / 220 PSI.
- Maximum vacuum, 0.22 bar / 3.2 PSI.
- Weight, 25.5 kg / 56 lb.

1203/9.0-99/540-15bar-C-1 1/4"/1" 821630

- Tapered shaft for tractor use with HARDI transmission shaft.
- Normal operating revolutions, 540 r/min.
- Maximum pressure, 15 bar / 220 PSI.
- Maximum vacuum, 0.5 bar / 7.4 PSI.
- Weight, 25.5 kg / 56 lb.

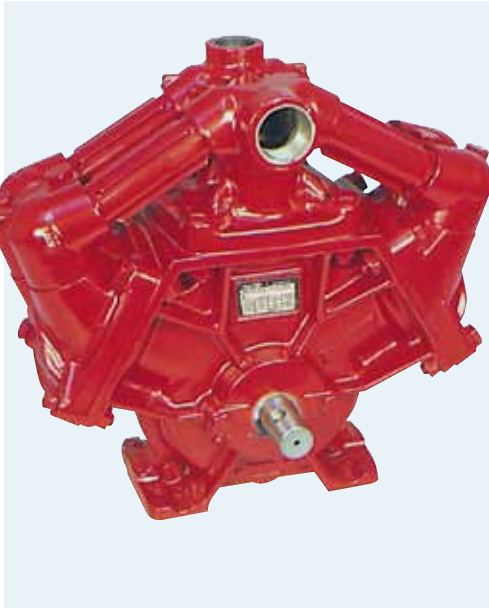


mm to in = mm x 0.0394

	r/min	300		400		500		540		600		700		800		900		1000		1100		1200		
	bar	l/min	kW	l/min	kW	l/min	kW			l/min	kW	l/min	kW	l/min	kW	l/min	kW	l/min	kW	l/min	kW	l/min	kW	
1203/6.0	0	36	0.9	47	1.2	58	1.5			71	1.8	83	2.1	93	2.4	101	2.8	108	3.0	115	3.4	128	3.7	
	2	26	1.0	36	1.3	45	1.6			53	1.9	64	2.2	73	2.5	82	2.8	89	3.0	100	3.4	110	3.7	
	4	24	1.0	32	1.3	40	1.6			48	1.9	57	2.2	64	2.5	71	2.8	77	3.1	88	3.5	92	3.7	
	6	23	1.0	31	1.3	39	1.6			46	1.9	53	2.2	60	2.5	68	2.8	74	3.2	82	3.5	87	3.8	
	10	22	1.2	30	1.4	37	1.7			43	2.0	51	2.2	57	2.6	64	2.9	70	3.2	77	3.6	82	3.9	
	15	21	1.3	28	1.5	35	1.8			42	2.1	48	2.4	54	2.8	61	3.2	66	3.5	72	3.9	77	4.1	
	PSI	gpm	Hp	gpm	Hp	gpm	Hp			gpm	Hp	gpm	Hp	gpm	Hp	gpm	Hp	gpm	Hp	gpm	Hp	gpm	Hp	
	0	9.5	1.2	12.4	1.6	15.3	2.0			18.7	2.4	21.9	2.8	24.6	3.2	26.7	3.8	28.5	4.0	30.4	4.6	33.8	5.0	
	29	6.9	1.3	9.5	1.7	11.9	2.1			14.0	2.5	16.9	3.0	19.3	3.4	21.6	3.8	23.5	4.0	26.4	4.6	29.0	5.0	
	58	6.3	1.3	8.4	1.7	10.6	2.1			12.7	2.5	15.0	3.0	16.9	3.4	18.7	3.8	20.3	4.2	23.2	4.7	24.3	5.0	
88	6.1	1.3	8.2	1.7	10.3	2.1			12.1	2.5	14.0	3.0	15.8	3.4	18.0	3.8	19.5	4.3	21.6	4.7	23.0	5.1		
147	5.8	1.6	7.9	1.9	9.8	2.3			11.4	2.7	13.5	3.0	15.0	3.5	16.9	3.9	18.5	4.3	20.3	4.8	21.6	5.2		
220	5.5	1.7	7.4	2.0	9.2	2.4			11.1	2.8	12.7	3.2	14.3	3.8	16.1	4.3	17.4	4.7	19.0	5.2	20.3	5.5		
1203/9.0	bar	l/min	kW	l/min	kW	l/min	kW	l/min	kW	l/min	kW	l/min	kW											
	0	56	0.9	72	1.3	93	1.5	99	1.6	112	1.8	130	2.1											
	2	40	1.0	55	1.3	70	1.6	75	1.7	83	1.8	96	2.1											
	4	40	1.1	54	1.3	66	1.6	72	1.7	80	1.8	93	2.2											
	6	40	1.1	53	1.4	65	1.6	71	1.7	79	1.9	91	2.2											
	10	38	1.4	52	1.7	64	1.8	69	1.9	77	2.1	88	2.5											
	15	37	1.6	50	2.0	62	2.3	67	2.5	75	2.8	86	3.3											
	PSI	gpm	Hp	gpm	Hp	gpm	Hp	gpm	Hp	gpm	Hp	gpm	Hp											
	0	14.8	1.2	19.0	1.7	24.6	2.0	26.1	2.1	29.6	2.4	34.3	2.8											
	29	10.6	1.3	14.5	1.7	18.5	2.1	19.8	2.3	21.9	2.4	25.3	2.8											
58	10.6	1.5	14.3	1.7	17.4	2.1	19.0	2.3	21.1	2.4	24.6	3.0												
88	10.6	1.5	14.0	1.9	17.2	2.1	18.7	2.3	20.9	2.5	24.0	3.0												
147	10.0	1.9	13.7	2.3	16.9	2.4	18.2	2.5	20.3	2.8	23.2	3.4												
220	9.8	2.1	13.2	2.7	16.4	3.1	17.7	3.4	19.8	3.8	22.7	4.4												

Model/stroke Pump model and pump stroke in millimetre.
 r/min Maximum revolutions per minute is indicated by the highest figure.
 Bar / PSI Maximum pressure is indicated by the highest figure.
 kW / Hp Power consumption in kilowatt and horsepower.
 l/min / gpm Capacity in litres and US gallons per minute at zero suction lift.

HARDI pump 1303



General specifications

- Three diaphragm positive displacement pump
- Base plate incorporated in crankcase
- Self-priming
- Can be run dry
- Can rotate clockwise or anticlockwise
- Three grease points for lubrication
- Dry sump to simplify maintenance
- No special tools needed for maintenance
- Polyurethane diaphragms and seals.
- Stainless steel diaphragm discs and bolts
- Cast iron crankcase and covers
- 1 1/4" suction port, 1" pressure port
- Recommended to use HARDI suction and pressure dampers

Part no.

1303/6.0-136/1000-15 bar-C-1 1/4"/1"

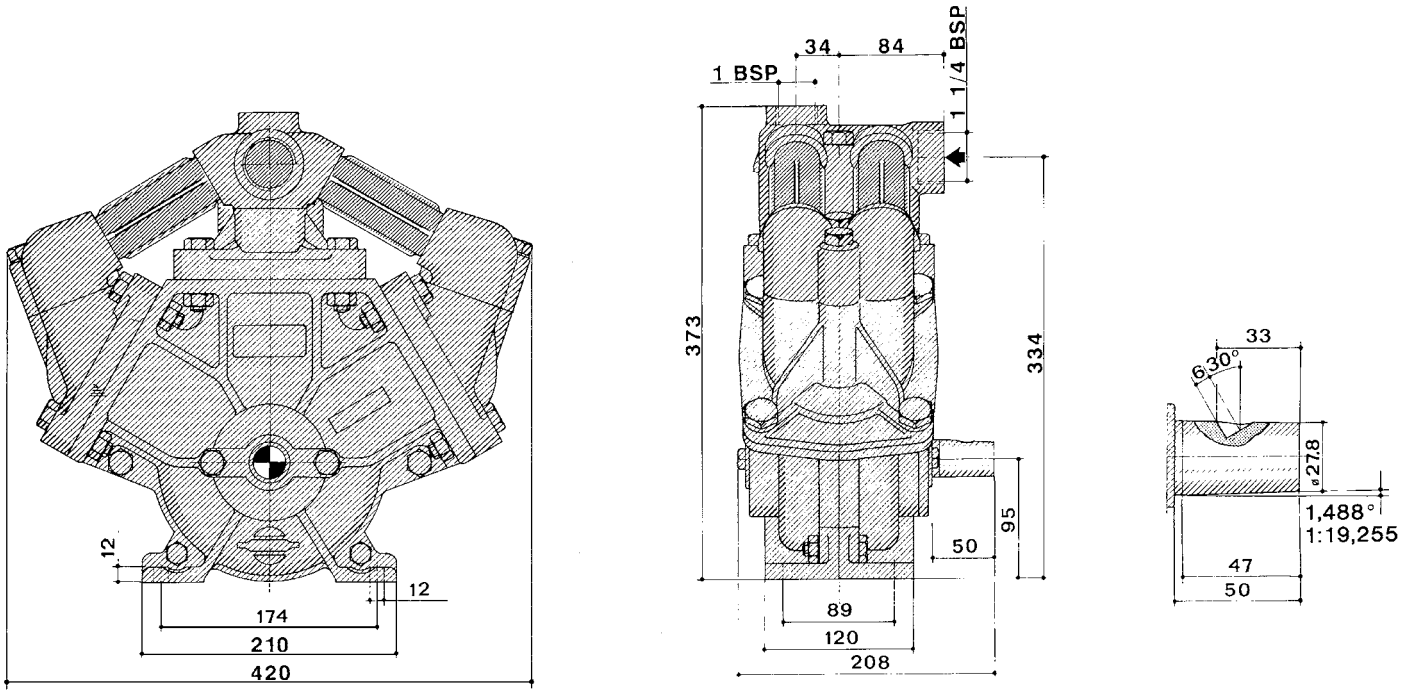
821634

- Tapered shaft for tractor use with HARDI transmission shaft.
- Normal operating revolutions, 1000 r/min.
- Maximum pressure, 15 bar/220 PSI
- Maximum vacuum, 0.26 bar/3.8 PSI
- Weight, 37.7 kg/83 lb

1303/9.0-114/540-15 bar-C-1 1/4"/1"

821635

- Tapered shaft for tractor use with HARDI transmission shaft
- Normal operating revolutions, 540 r/min
- Maximum pressure, 15 bar/220 PSI
- Maximum vacuum, 0.57 bar/8.4 PSI
- Weight, 37.7 kg/83 lb



mm to in = mm x 0.0394

	r/min	300		400		500		540		600		700		800		900		1000		1100		1200	
	bar	l/min	kW	l/min	kW	l/min	kW	l/min	kW	l/min	kW	l/min	kW	l/min	kW	l/min	kW	l/min	kW	l/min	kW	l/min	kW
1303/6.0	0	41	0.9	54	1.2	70	1.5			82	1.8	94	2.1	106	2.4	122	2.6	136	3.0	151	3.3	165	3.6
	2	38	0.9	51	1.2	64	1.5			75	1.8	86	2.1	98	2.4	109	2.7	122	3.0	134	3.3	146	3.6
	4	37	1.0	49	1.3	62	1.6			73	1.9	83	2.2	94	2.4	104	2.7	116	3.1	130	3.3	138	3.6
	6	36	1.0	48	1.3	60	1.6			70	2.0	81	2.3	91	2.7	101	3.0	113	3.3	124	3.6	133	4.1
	10	34	1.1	46	1.4	57	1.8			67	2.2	77	2.6	87	3.0	97	3.3	108	3.7	117	4.1	128	4.6
	15	33	1.4	44	1.7	54	2.2			64	2.7	73	3.1	82	3.6	92	4.1	103	4.5	113	4.9	123	5.3
	PSI	gpm	Hp	gpm	Hp	gpm	Hp			gpm	Hp	gpm	Hp	gpm	Hp	gpm	Hp	gpm	Hp	gpm	Hp	gpm	Hp
	0	10.8	1.2	14.3	1.6	18.5	2.0			21.6	2.4	24.8	2.8	28.0	3.2	32.2	3.5	35.9	4.0	39.9	4.4	43.6	4.8
	29	10.0	1.2	13.5	1.6	16.9	2.0			19.8	2.4	22.7	2.8	25.9	3.2	28.8	3.6	32.2	4.0	35.4	4.4	38.5	4.8
	58	9.8	1.3	12.9	1.7	16.4	2.1			19.3	2.5	21.9	3.0	24.8	3.2	27.5	3.6	30.6	4.2	34.3	4.4	36.4	4.8
88	9.5	1.3	12.7	1.7	15.8	2.1			18.5	2.7	21.4	3.1	24.0	3.6	26.7	4.0	29.8	4.4	32.7	4.8	35.1	5.5	
147	9.0	1.5	12.1	1.9	15.0	2.4			17.7	3.0	20.3	3.5	23.0	4.0	25.6	4.4	28.5	5.0	30.9	5.5	33.8	6.2	
220	8.7	1.9	11.6	2.3	14.3	3.0			16.9	3.6	19.3	4.2	21.6	4.8	24.3	5.5	27.2	6.0	29.8	6.6	32.5	7.1	
1303/9.0	bar	l/min	kW	l/min	kW	l/min	kW	l/min	kW	l/min	kW	l/min	kW										
	0	63	0.9	84	1.2	103	1.5	114	1.6	125	1.8	144	2.1										
	2	61	0.9	81	1.2	100	1.5	107	1.7	120	1.9	137	2.1										
	4	59	0.9	79	1.3	97	1.6	104	1.7	117	1.9	133	2.2										
	6	58	1.0	78	1.3	96	1.7	102	1.8	115	2.1	131	2.4										
	10	56	1.3	76	1.8	94	2.3	100	2.5	111	2.7	126	3.2										
	15	55	1.8	74	2.4	92	3.0	98	3.3	108	3.8	123	4.4										
	PSI	gpm	Hp	gpm	Hp	gpm	Hp	gpm	Hp	gpm	Hp	gpm	Hp										
	0	16.6	1.2	22.2	1.6	27.2	2.0	30.1	2.1	33.0	2.4	38.0	2.8										
	29	16.1	1.2	21.4	1.6	26.4	2.0	28.2	2.3	31.7	2.5	36.2	2.8										
58	15.6	1.2	20.9	1.7	25.6	2.1	27.5	2.3	30.9	2.5	35.1	3.0											
88	15.3	1.3	20.6	1.7	25.3	2.3	26.9	2.4	30.4	2.8	34.6	3.2											
147	14.8	1.7	20.1	2.4	24.8	3.1	26.4	3.4	29.3	3.6	33.3	4.3											
220	14.5	2.4	19.5	3.2	24.3	4.0	25.9	4.4	28.5	5.1	32.5	5.9											

Model/stroke Pump model and pump stroke in millimetre.
 r/min Maximum revolutions per minute is indicated by the highest figure.
 Bar / PSI Maximum pressure is indicated by the highest figure.
 kW / Hp Power consumption in kilowatt and horsepower.
 l/min / gpm Capacity in litres and US gallons per minute at zero suction lift.

HARDI pump 363



General specifications

- Six diaphragm positive displacement radial pump with base plate.
- Self-priming.
- Can be run dry.
- Can rotate clockwise or anticlockwise.
- One grease point for lubrication.
- Dry sump to simplify maintenance.
- No special tools needed for maintenance.
- Polyurethane diaphragms and seals.
- Cast iron crankcase and covers.
- Stainless steel bolts and plates for diaphragms.
- 1 1/2" suction port, 1" pressure port.
- Hydraulic drive kit available.

Part no.

363/5.5-185/1000-15bar-S-1 1/4"/1"+ 21 spline 821574

- 21-splined 1 3/8" shaft, for tractor use.
- Normal operating revolutions, 1000 r/min.
- Maximum pressure, 15 bar / 220 PSI.
- Maximum vacuum, 0.48 bar / 7.1 PSI.
- Weight, 52.2 kg / 115 lb.

363/7.0-140/540-20bar-S/S-1 1/4"/1" 821596

- 6-splined 1 3/8" through shaft, for tractor use.
- Normal operating revolutions, 540 r/min.
- Maximum pressure, 20 bar / 294 PSI.
- Maximum vacuum, 0.54 bar / 7.9 PSI.
- Weight, 52.6 kg / 116 lb.

363/7.0-140/540-20bar-S-1 1/4"/1" 821576

- 6-splined 1 3/8" shaft, for tractor use.
- Normal operating revolutions, 540 r/min.
- Maximum pressure, 20 bar / 294 PSI.
- Maximum vacuum, 0.54 bar / 7.9 PSI.
- Weight, 52.6 kg / 116 lb.

363/10.0-194/540-15bar-S-1 1/4"/1" 821579

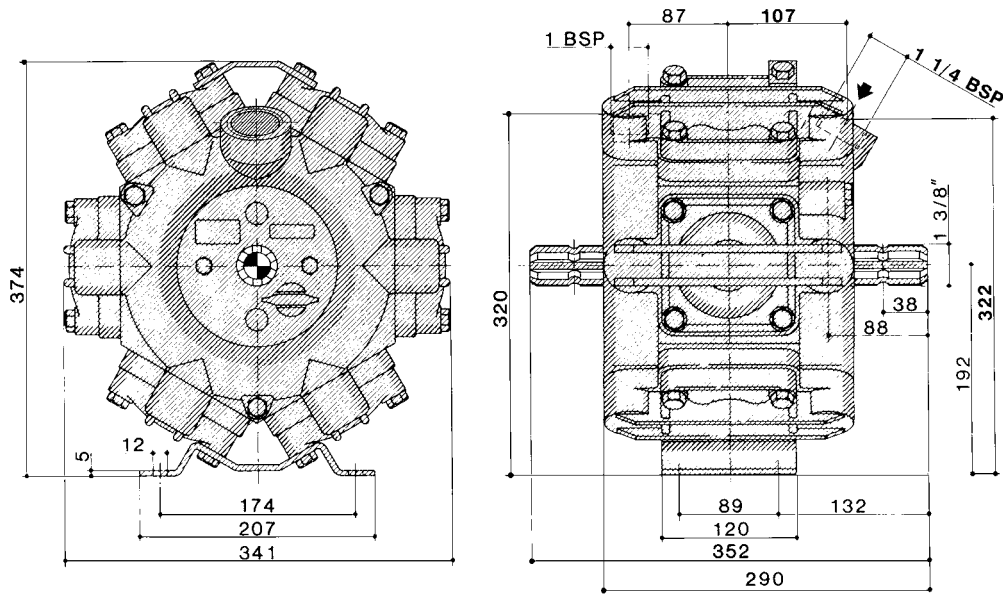
- 6-splined 1 3/8" shaft, for tractor use.
- Normal operating revolutions, 540 r/min.
- Maximum pressure, 15 bar / 220 PSI.
- Maximum vacuum, 0.64 bar / 9.4 PSI.
- Weight, 52.5 kg / 116 lb.

363/10.0-194/540-15bar-S/S-1 1/4"/1" 821580

- 6-splined 1 3/8" through shaft, for tractor use.
- Normal operating revolutions, 540 r/min.
- Maximum pressure, 15 bar / 220 PSI.
- Maximum vacuum, 0.64 bar / 9.4 PSI.
- Weight, 52.9 kg / 117 lb.

363/10.0-194/540-15bar-S-1 1/2"/1" 821643

- 6-splined 1 3/8" shaft, for tractor use.
- Normal operating revolutions, 540 r/min.
- Maximum pressure, 15 bar / 220 PSI.
- Maximum vacuum, 0.64 bar / 9.4 PSI.
- Weight, 52.9 kg / 117 lb.

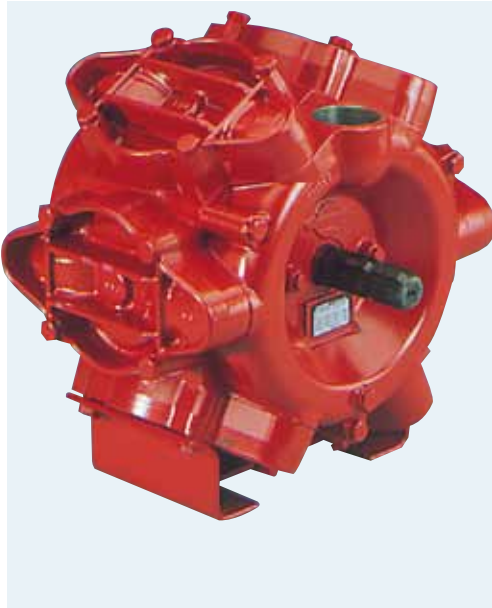


mm to in = mm x 0.0394

300	400		500		540		600		700		800		900		1000		1100		1200				
	bar	l/min	kW	l/min	kW	l/min	kW	l/min	kW	l/min	kW	l/min	kW	l/min	kW	l/min	kW	l/min	kW	l/min	kW		
0	61	1.0	82	1.3	103	1.5			123	1.9	144	2.2	164	2.4	186	2.8	201	3.1	213	3.4	225	3.7	
2	59	1.0	79	1.3	100	1.5			119	1.9	140	2.2	160	2.5	179	2.9	191	3.2	200	3.5	208	3.8	
4	58	1.0	78	1.4	98	1.7			117	2.1	138	2.4	155	2.8	176	3.3	188	3.6	199	3.9	204	4.3	
6	57	1.1	76	1.4	96	2.0			115	2.4	134	2.9	153	3.5	173	3.9	186	4.3	196	4.7	202	5.1	
10	55	1.6	74	2.1	94	2.7			112	3.2	130	3.8	148	4.4	168	5.2	180	5.6	190	6.1	200	6.6	
15	53	2.0	72	2.6	89	3.3			108	4.1	126	4.9	144	5.7	163	6.6	174	7.1	185	7.9	196	8.4	
PSI	gpm	Hp	gpm	Hp	gpm	Hp			gpm	Hp	gpm	Hp	gpm	Hp	gpm	Hp	gpm	Hp	gpm	Hp	gpm	Hp	
0	16.1	1.3	21.6	1.7	27.2	2.0			32.5	2.5	38.0	3.0	43.3	3.2	49.1	3.8	53.1	4.2	56.2	4.6	59.4	5.0	
29	15.6	1.3	20.9	1.7	26.4	2.0			31.4	2.6	37.0	3.0	42.2	3.4	47.3	3.9	50.4	4.3	52.8	4.7	54.9	5.1	
58	15.3	1.3	20.6	1.9	25.9	2.3			30.9	2.8	36.4	3.2	40.9	3.8	46.5	4.4	49.6	4.8	52.5	5.2	53.9	5.8	
88	15.0	1.5	20.1	1.9	25.3	2.7			30.4	3.2	35.4	3.9	40.4	4.7	45.7	5.2	49.1	5.8	51.7	6.3	53.3	6.8	
147	14.5	2.1	19.5	2.8	24.8	3.6			29.6	4.3	34.3	5.1	39.1	5.9	44.4	7.0	47.5	7.5	50.2	8.2	52.8	8.9	
220	14.0	2.7	19.0	3.5	23.5	4.4			28.5	5.5	33.3	6.6	38.0	7.6	43.0	8.9	45.9	9.5	48.8	10.6	51.7	11.3	
363/7.0	bar	l/min	kW	l/min	kW	l/min	kW	l/min	kW	l/min	kW	l/min	kW	l/min	kW	l/min	kW	l/min	kW	l/min	kW	l/min	kW
	0	78	0.9	104	1.2	131	1.6	140	1.6	156	1.9	183	2.2										
	2	76	1.0	102	1.3	128	1.7	136	1.8	152	2.0	177	2.3										
	4	74	1.3	98	1.5	125	1.9	133	2.1	147	2.4	170	2.8										
	6	73	1.4	97	1.8	121	2.3	130	2.5	144	2.9	167	3.5										
	10	71	1.8	95	2.4	117	3.1	127	3.4	141	3.8	164	4.6										
	15	70	2.4	92	3.2	115	3.9	124	4.4	137	5.0	161	5.9										
	20	68	2.9	90	3.9	113	4.8	122	5.4	135	5.9	158	7.0										
	PSI	gpm	Hp	gpm	Hp	gpm	Hp	gpm	Hp	gpm	Hp	gpm	Hp	gpm	Hp	gpm	Hp	gpm	Hp	gpm	Hp	gpm	Hp
	0	20.6	1.2	27.5	1.6	34.6	2.1	37.0	2.1	41.2	2.5	48.3	3.0										
29	20.1	1.3	26.9	1.7	33.8	2.3	35.9	2.4	40.1	2.7	46.7	3.1											
58	19.5	1.7	25.9	2.0	33.0	2.5	35.1	2.8	38.8	3.2	44.9	3.8											
88	19.3	1.9	25.6	2.4	31.9	3.1	34.3	3.4	38.0	3.9	44.1	4.7											
147	18.7	2.4	25.1	3.2	30.9	4.2	33.5	4.6	37.2	5.1	43.3	6.2											
220	18.5	3.2	24.3	4.3	30.4	5.2	32.7	5.9	36.2	6.7	42.5	7.9											
294	18.0	3.9	23.8	5.2	29.8	6.4	32.2	7.2	35.6	7.9	41.7	9.4											
363/10.0	bar	l/min	kW	l/min	kW	l/min	kW	l/min	kW	l/min	kW	l/min	kW	l/min	kW	l/min	kW	l/min	kW	l/min	kW	l/min	kW
	0	107	0.9	141	1.4	178	1.7	194	1.8	211	2.0	229	2.4										
	2	105	1.3	140	1.5	175	2.1	189	2.3	207	2.6	225	3.2										
	4	103	1.5	139	2.1	172	2.5	186	2.9	205	3.3	224	3.9										
	6	102	1.8	138	2.5	169	3.2	184	3.5	203	3.9	223	4.6										
	10	100	2.5	135	3.4	166	4.4	182	4.7	200	5.2	220	6.0										
	15	98	3.3	132	4.5	164	5.6	178	6.2	197	6.6	217	7.6										
	PSI	gpm	Hp	gpm	Hp	gpm	Hp	gpm	Hp	gpm	Hp	gpm	Hp	gpm	Hp	gpm	Hp	gpm	Hp	gpm	Hp	gpm	Hp
	0	28.2	1.2	37.2	1.9	47.0	2.2	51.2	2.4	55.7	2.7	60.5	3.2										
	29	27.7	1.7	37.0	2.1	46.2	2.8	49.9	3.1	54.6	3.5	59.4	4.3										
58	27.2	2.0	36.7	2.7	45.4	3.4	49.1	3.9	54.1	4.4	59.1	5.2											
88	26.9	2.5	36.4	3.4	44.6	4.2	48.6	4.6	53.6	5.3	58.9	6.2											
147	26.4	3.4	35.6	4.5	43.8	6.0	48.0	6.4	52.8	7.0	58.1	8.1											
220	25.9	4.5	34.8	6.0	43.3	7.5	47.0	8.4	52.0	8.8	57.3	10.2											

Model/stroke Pump model and pump stroke in millimetre.
 r/min Maximum revolutions per minute is indicated by the highest figure.
 Bar / PSI Maximum pressure is indicated by the highest figure.
 kW / Hp Power consumption in kilowatt and horsepower.
 l/min / gpm Capacity in litres and US gallons per minute at zero suction lift.

HARDI pump 463



General specifications

- High capacity six diaphragm positive displacement radial pump with base plate
- Self-priming
- Can be run dry
- Can rotate clockwise or anticlockwise
- One grease point for lubrication
- Dry sump to simplify maintenance
- No special tools needed for maintenance
- Polyurethane diaphragms and seals
- Cast iron crankcase and covers
- Stainless steel bolts and plates for diaphragms
- 2" suction port, 1 1/4" pressure port
- Hydraulic drive kit available

Part no.

463/5.5-265/1000-15bar-S/S-2"/1 1/4"+21 spline 821585

- 21-splined 1 3/8" through shaft, for tractor use
- Normal operating revolutions, 1000 r/min
- Maximum pressure, 15 bar/220 PSI
- Maximum vacuum, 0.40 bar/5.9 PSI
- Weight, 66.5 kg/147 lb

463/5.5-265/1000-15bar-S-2"/1 1/4"+21 spline 821584

- 21-splined 1 3/8" shaft, for tractor use
- Normal operating revolutions, 1000 r/min
- Maximum pressure, 15 bar/220 PSI
- Maximum vacuum, 0.40 bar/5.9 PSI
- Weight, 67.0 kg/148 lb

463/10.0-276/540-15bar-S-2"/1 1/4" 821586

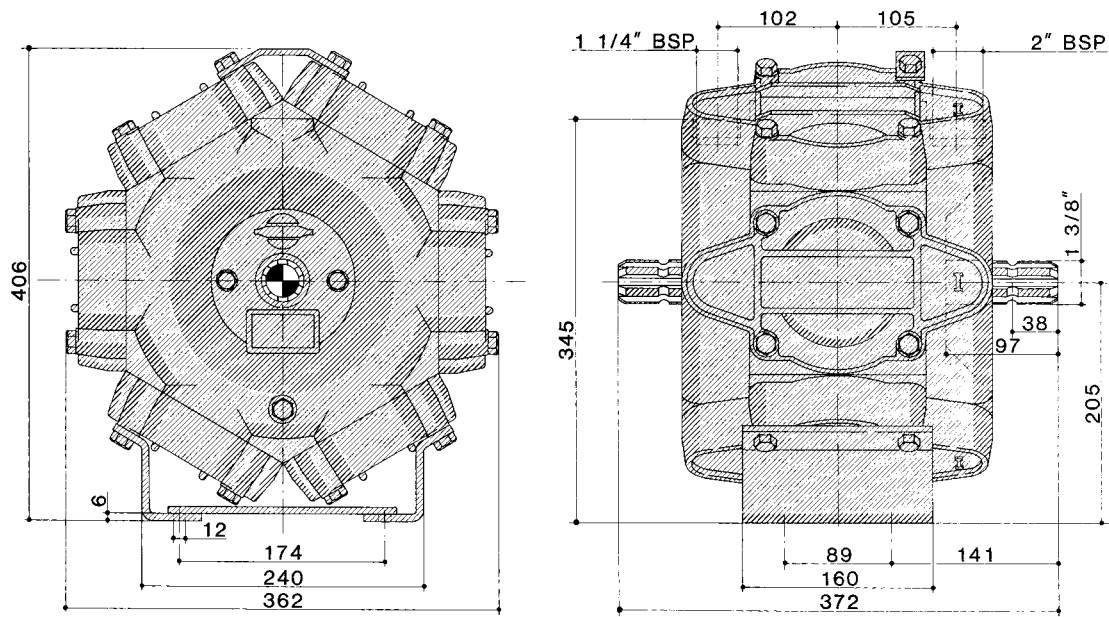
- 6-splined 1 3/8" shaft, for tractor use
- Normal operating revolutions, 540 r/min
- Maximum pressure, 15 bar/220 PSI
- Maximum vacuum, 0.58 bar/8.5 PSI
- Weight, 66.5 kg/147 lb

463/10.0-276/540-15bar-S/S-2"/1 1/4" 821587

- 6-splined 1 3/8" through shaft, for tractor use
- Normal operating revolutions, 540 r/min
- Maximum pressure, 15 bar/220 PSI
- Maximum vacuum, 0.58 bar/8.5 PSI
- Weight, 66.9 kg/148 lb

463/12.0-322/540-15bar-S-2"/1 1/4" 821595

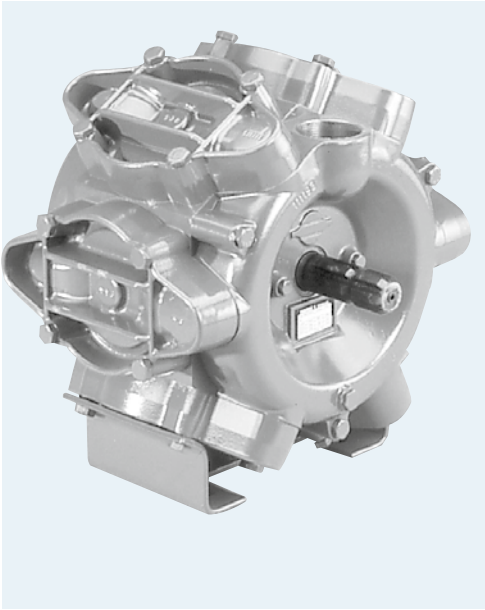
- 6-splined 1 3/8" shaft, for tractor use
- Normal operating revolutions, 540 r/min
- Maximum pressure, 15 bar/220 PSI
- Maximum vacuum, 0.58 bar/8.5 PSI
- Weight, 66.7 kg/147 lb



mm to in = mm x 0.0394

	r/min	300		400		500		540		600		700		800		900		1000		1100		1200		
	bar	l/min	kW	l/min	kW	l/min	kW	l/min	kW	l/min	kW	l/min	kW	l/min	kW	l/min	kW	l/min	kW	l/min	kW	l/min	kW	
463/5.5	0	89	0.9	119	1.2	148	1.6			178	1.9	206	2.2	233	2.5	273	2.8	305	3.2	325	3.5	334	3.8	
	2	84	0.0	113	1.3	140	1.6			168	1.0	197	2.3	222	2.6	252	3.0	278	3.5	296	3.9	298	4.1	
	4	82	1.0	108	1.5	137	1.9			162	2.3	190	2.9	216	3.3	244	3.9	273	4.5	289	4.9	303	5.6	
	6	78	1.3	105	1.8	131	2.4			158	2.9	185	3.5	211	4.3	239	5.0	269	5.5	286	5.8	298	6.5	
	10	74	2.0	100	2.6	126	3.2			151	4.0	178	4.7	202	5.3	229	6.3	257	7.3	274	8.2	291	8.7	
	15	70	2.5	9.5	3.3	120	4.2			145	5.2	171	6.1	195	7.0	219	8.1	246	9.1	264	10.3	280	11.1	
	PSI	gpm	Hp	gpm	Hp	gpm	Hp			gpm	Hp	gpm	Hp	gpm	Hp	gpm	Hp	gpm	Hp	gpm	Hp	gpm	Hp	
	0	23.5	1.3	31.4	1.7	39.1	2.1			46.0	2.5	54.4	2.9	61.5	3.4	72.1	3.8	80.5	4.3	85.8	4.6	88.2	5.1	
	29	22.2	1.3	29.8	1.8	36.0	2.1			44.4	2.6	52.0	3.1	58.6	3.5	66.5	4.0	73.4	4.7	78.1	5.2	78.7	5.5	
	58	21.6	1.3	28.5	2.0	36.2	2.5			42.8	3.1	50.2	3.9	57.0	4.4	64.4	5.2	72.1	6.0	76.3	6.6	79.0	7.5	
88	20.6	1.7	27.7	2.4	34.6	3.2			41.7	3.9	48.8	4.7	55.7	5.8	63.1	6.7	71.0	7.4	75.5	7.8	78.7	8.7		
147	19.5	2.7	26.4	3.5	33.3	4.3			39.9	5.4	46.0	6.3	53.3	7.1	60.5	8.4	67.8	9.8	72.3	10.0	76.8	11.7		
220	18.5	3.4	25.1	4.4	31.7	5.6			38.3	6.0	45.1	8.2	51.5	9.4	57.8	10.9	64.9	12.2	69.7	13.8	73.9	14.9		
463/10.0	0	156	1.0	207	1.3	257	1.6	276	1.8	305	2.1	352	2.8											
	2	152	1.2	202	1.7	252	2.3	270	2.6	299	3.0	343	3.8											
	4	149	1.7	198	2.5	246	3.1	265	3.5	295	3.9	337	5.2											
	6	146	2.2	195	3.0	242	3.9	263	4.3	289	4.9	335	6.1											
	10	142	3.1	192	4.3	236	5.6	256	5.9	282	6.7	326	8.1											
	15	136	3.9	184	5.3	230	6.6	248	7.0	276	7.9	320	9.3											
	PSI	gpm	Hp	gpm	Hp	gpm	Hp	gpm	Hp	gpm	Hp	gpm	Hp											
	0	41.2	1.3	54.6	1.7	67.8	2.2	72.9	2.4	80.5	2.8	92.9	3.8											
	29	40.1	1.6	53.3	2.3	66.5	3.1	71.3	3.5	78.9	4.1	90.6	5.1											
	58	39.3	2.3	52.3	3.3	64.9	4.1	70.0	4.6	77.9	5.2	89.0	6.9											
88	38.5	2.9	51.5	4.0	63.9	5.3	69.4	5.8	76.3	6.6	88.4	8.1												
147	37.5	4.1	50.7	5.7	62.3	7.5	67.6	8.0	74.4	9.0	86.1	10.9												
220	35.9	5.3	48.6	7.1	60.7	8.9	65.5	9.4	72.9	10.6	84.5	12.4												
463/12.0	0	182	1.0	240	1.4	298	1.9	322	2.2	358	2.7	390	3.5											
	2	178	1.4	237	2.0	292	2.7	317	3.1	350	3.6	386	4.5											
	4	175	1.8	233	2.7	288	3.9	314	4.2	345	4.9	382	5.8											
	6	172	2.6	230	3.5	284	4.6	308	5.1	340	5.9	378	7.2											
	10	168	3.5	223	5.0	280	6.4	302	7.1	333	7.8	372	9.1											
	15	163	4.1	218	5.5	273	6.8	295	7.4	326	8.2	364	9.7											
	PSI	gpm	Hp	gpm	Hp	gpm	Hp	gpm	Hp	gpm	Hp	gpm	Hp											
	0	48.0	1.3	63.4	1.8	78.7	2.6	85.0	3.0	94.5	3.6	103.0	4.7											
	29	47.0	1.9	62.6	2.7	77.1	3.6	83.7	4.2	92.4	4.8	101.9	6.0											
	58	46.2	2.5	61.5	3.7	76.0	5.2	82.9	5.6	91.1	6.6	100.8	7.8											
88	45.4	3.4	60.7	4.7	75.0	6.2	81.3	6.9	89.8	7.9	99.8	9.6												
147	44.4	4.6	58.9	6.7	73.9	8.6	79.7	9.5	87.9	10.4	98.2	12.2												
220	43.0	5.4	57.6	7.4	72.1	9.1	77.9	9.9	86.1	10.9	96.1	13.0												

Model/stroke Pump model and pump stroke in millimetre.
 r/min Maximum revolutions per minute is indicated by the highest figure.
 Bar / PSI Maximum pressure is indicated by the highest figure.
 kW / Hp Power consumption in kilowatt and horsepower.
 l/min / gpm Capacity in litres and US gallons per minute at zero suction lift.

HARDI hot liquid pump**General specifications**

- Six diaphragm positive displacement radial pump
- For hot liquids up to 90°C/194°F
- Supplied with base plate
- Self-priming
- Can be run dry
- Can rotate clockwise or anticlockwise
- One grease point for lubrication
- Dry sump to simplify maintenance
- No special tools needed for maintenance
- Nitril diaphragms and seals
- Stainless steel valves
- Stainless steel diaphragm discs and bolts
- Cast iron crankcase and covers
- Surface coated black
- Hydraulic drive kit available
- Not factory lubricated. Requires suitable grease

363/7.0-140/540-20bar-S-1½"/1"+Hot liquid ·

- 1½" suction port, 1" pressure port (ISO 7).
- 6-splined 1⅜" shaft.
- Normal operating revolutions, 540 r/min.
- Maximum pressure, 20 bar/294 PSI.
- Maximum vacuum, 0.54 bar/7.9 PSI.
- Weight, 52.6 kg/116 lb.

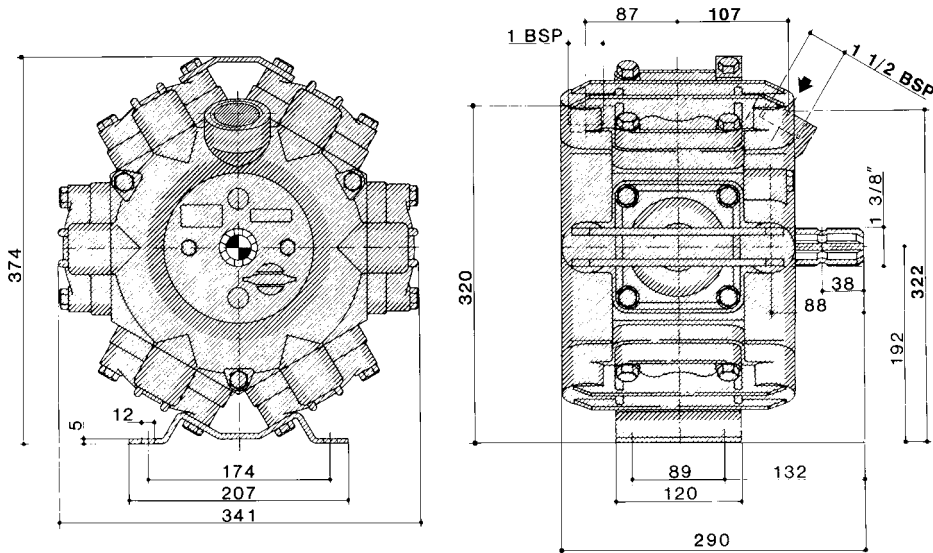
Part no.

821577

463/10.0-276/540-15bar-S- 2"/1¼"+Hot liquid

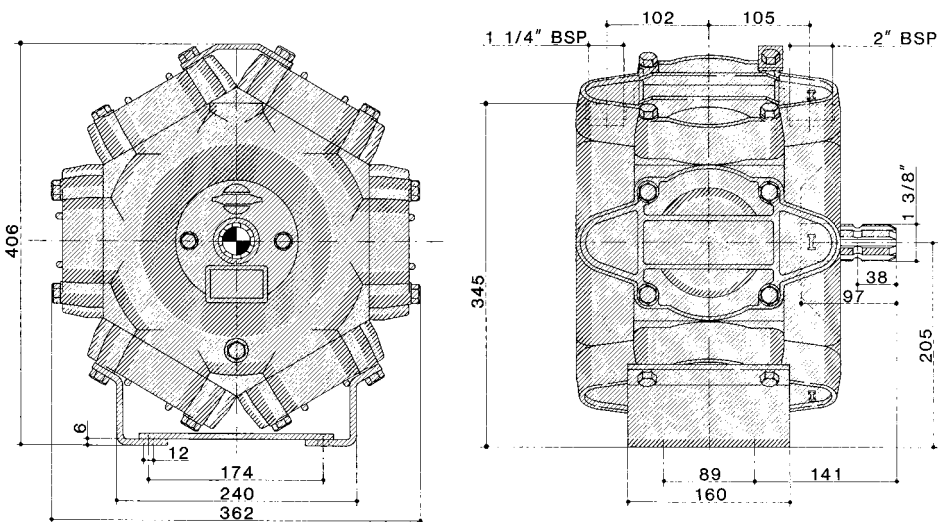
- 2" suction port, 1¼" pressure port (ISO 7).
- 6-splined 1⅜" shaft.
- Normal operating revolutions, 540 r/min.
- Maximum pressure, 15 bar/220 PSI.
- Maximum vacuum, 0.58 bar/8.5 PSI.
- Weight, 66.5 kg/147 lb.

821591



mm to in = mm x 0.0394

463/7.0	r/min	300		400		500		540		600		700				
	bar	0	2	4	6	10	15	20	0	29	58	88	147	220	294	
	l/min	78	76	74	73	71	70	68	140	156	152	147	141	137	135	
	kW	0.9	1.0	1.3	1.4	1.8	2.4	2.9	1.6	1.9	2.0	2.4	2.9	3.8	5.9	
	l/min	104	102	98	97	95	92	90	131	136	133	127	124	122		
	kW	1.2	1.3	1.5	1.8	2.4	3.2	3.9	1.6	1.8	2.1	3.4	4.4	5.4		
	l/min	131	128	125	121	117	115	113	140	152	147	141	137	135		
	kW	1.6	1.7	1.9	2.3	3.1	3.9	4.8	1.6	2.0	2.4	3.8	5.0	5.9		
	l/min	156	152	147	144	141	140	139	156	167	164	161	158			
	kW	1.9	2.0	2.4	2.9	3.8	5.0	7.0	1.9	2.3	2.8	3.5	4.6			
	PSI	0	29	58	88	147	220	294	37.0	41.2	40.1	38.8	38.0	37.2	36.2	35.6
	gpm	20.6	20.1	19.5	19.3	18.7	18.5	18.0	20.6	21.9	21.7	21.5	21.3	21.1	21.0	
	Hp	1.2	1.3	1.7	1.9	2.4	3.2	3.9	2.1	2.5	2.7	3.2	3.9	4.6	7.9	
	gpm	27.5	26.9	25.9	25.6	25.1	24.3	23.8	34.6	38.8	38.0	37.2	36.2	35.6		
	Hp	1.6	1.7	2.0	2.4	3.2	4.3	5.2	2.1	2.8	2.9	3.2	3.9	4.6		
gpm	34.6	33.8	33.0	31.9	30.9	30.4	29.8	37.0	41.2	40.1	38.8	38.0	37.2	36.2		
Hp	2.1	2.3	2.5	3.1	4.2	5.2	6.4	2.1	2.8	2.9	3.2	3.9	4.6			
gpm	41.2	40.1	38.8	38.0	37.2	36.2	35.6	41.2	44.9	44.1	43.3	42.5	41.7			
Hp	2.5	2.7	3.2	3.9	5.1	6.7	7.9	2.5	3.2	3.9	4.6	5.9				



463/10.0	r/min	300		400		500		540		600		700		
	bar	0	2	4	6	10	15	0	29	58	88	147	220	
	l/min	156	152	149	146	142	136	156	176	170	165	163	161	
	kW	1.0	1.2	1.7	2.2	3.1	3.9	1.8	2.6	3.5	4.3	5.9	7.0	
	l/min	207	202	198	195	192	184	257	276	265	256	248	276	
	kW	1.3	1.3	1.7	2.0	2.6	3.1	1.6	1.8	2.1	2.6	3.1	3.5	
	l/min	257	252	246	242	236	230	276	299	295	289	282	276	
	kW	1.6	2.3	3.1	3.9	5.6	6.6	1.8	2.6	3.5	4.9	6.7	7.9	
	l/min	305	302	295	289	282	276	305	326	320	315	310	305	
	kW	2.1	3.0	3.9	4.9	6.7	7.9	2.1	3.0	3.9	5.2	6.6	7.9	
	PSI	0	29	58	88	147	220	72.9	80.5	78.9	77.9	76.3	74.4	72.9
	gpm	41.2	40.1	39.3	38.5	37.5	35.9	41.2	44.9	44.1	43.3	42.5	41.7	
	Hp	1.3	1.6	2.3	2.9	4.1	5.3	2.4	3.5	4.1	5.2	6.6	8.1	
	gpm	54.6	53.3	52.3	51.5	50.7	48.6	67.8	80.5	78.9	77.9	76.3	74.4	
	Hp	1.7	2.3	3.3	4.0	5.0	7.1	2.2	3.5	4.1	5.2	6.6	8.1	
gpm	67.8	66.5	64.9	63.9	62.3	60.7	72.9	80.5	78.9	77.9	76.3	74.4		
Hp	2.2	3.1	4.1	5.3	7.5	8.9	2.4	3.5	4.1	5.2	6.6	8.1		
gpm	72.9	71.3	70.0	69.4	67.6	65.5	72.9	80.5	78.9	77.9	76.3	74.4		
Hp	2.4	3.5	4.6	5.8	8.0	9.4	2.4	3.5	4.1	5.2	6.6	8.1		
gpm	80.5	78.9	77.9	76.3	74.4	72.9	80.5	88.1	86.1	84.5	82.9	81.3		
Hp	2.8	4.1	5.2	6.6	9.0	10.6	2.8	4.1	5.2	6.6	8.1	9.4		

Model/stroke Pump model and pump stroke in millimetre.
 r/min Maximum revolutions per minute is indicated by the highest figure.
 Bar / PSI Maximum pressure is indicated by the highest figure.
 kW / Hp Power consumption in kilowatt and horsepower.
 l/min / gpm Capacity in litres and US gallons per minute at zero suction lift.

Spray lines

The extensive range is ideal for the do-it-yourself builder. The materials are chemical and UV light resistant.

Part no.



Boom tubes with 50 cm spacing and 3/4" end bush

2-hole	612872
3-hole	612883
4-hole	612894
5-hole	612905



Caps

3/8"	320187
1/2"	320084
3/4"	320283



Boom tube end plug	716413
Boom tube 1/2" hose tail	726236
Boom tube 3/4" hose tail	724621
Boom tube 3/4" threaded	720856



Saddle assemblies

Single with 3/8" screw fitting	716037
Single with SNAP-FIT	725079
Triple with SNAP-FIT TRIPLET	725078



Nozzle filters

50 mesh (Blue) without seal	614366
80 mesh (Red) without seal	614367
100 mesh (Yellow) without seal	614368
50 mesh (Blue) with seal (for SNAP-FIT)	725043
80 mesh (Red) with seal (for SNAP-FIT)	725042
100 mesh (Yellow) with seal (for SNAP-FIT)	725044



Nozzle caps and accessories

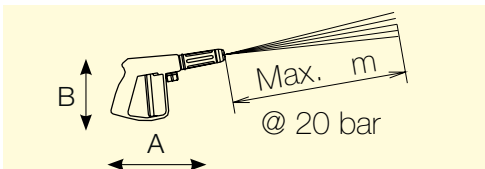
3/8"	320187
3/8" for ISO nozzles (White)	321517
	334082
SNAP-FIT for hollow cone nozzles	334083
SNAP-FIT for flat fan nozzles	322068
SNAP-FIT with 3/8" thread	242252
Gasket when filter not used	334862
	242222
Cap to suit "Tee-Jet" bayonet	28063000
Gasket for "Tee-Jet" bayonet	372140
	334873
DUOCAP double nozzle holder	334874
Plugged blank	322114
	322116
Mounting bracket riser	
Bracket angle	
Nut	
Bolt	

Spray guns



Top quality, robust spray guns with safety lock OFF to prevent accidental activation. A ceramic 1099-20 nozzle is standard. Model 60 S and 60 L are rugged light weight units for one-handed operation with a comfortable handle and adjustable end piece to alter spray coverage. The L version has a 26 cm extension. Model 100 is a rugged two-hand operated unit also with adjustable coverage.

Part no.



Features:

- Long life ceramic nozzle
- Output is 7.5 litres at 10 bar
- Adjustable spray angle from 5° to 62°
- Up to 12 metre reach
- Lock OFF to prevent accidental spraying
- 1/2" hose swivel and hose clamp standard

	A cm	B cm	M m	Max pressure bar	Weight kg
60S	28	15	14	60	0.55
60L	54	15	14	60	0.75
100	56	19	15	100	1.54

<i>Model 100, 100 bar max. pressure</i>	843195
<i>Model 60 S, 60 bar max. pressure</i>	843196
<i>Model 60 L, 60 bar max. pressure</i>	843197

	Nozzle	Angle °	l/min	
			10 bar	20 bar
	1099	X*		
-10	22		1.34 / 1.98	1.90 / 2.80
Standard -20	47		5.30 / 7.50	7.50 / 10.60
-23	62		6.93 / 9.05	9.80 / 12.80

Tanks



The HARDI tanks are made of tough, UV resistant polyethylene.

Features:

- Complete with lid and fitting
- Basket filter included
- Powder coated frame included

<i>NK 200 litre</i>	72264700
<i>NK 300 litre</i>	72264800
<i>NK 400 litre</i>	824197
<i>NK 600 litre</i>	824198
<i>NK 800 litre</i>	824199

Valves

The HARDI valves are purpose built for sprayer systems. They are resistant to most pesticides and made from UV resistant, glass reinforced nylon.

Features:

- Quick to assemble
- Excellent sealing due to radial system
- O-ring seals are made of highly chemical resistant material
- Flexibility orientation
- High flow capacity (minimal internal restrictions)
- Easy to pull apart and re-usable
- Working pressure up to 15 bar for pressure valves



Ball valves

S67 Two way suction	72293700
S93 Two way suction	840110

S67 Two way pressure	841062
----------------------------	--------

S93 Four way suction	72183700
S67 Four way pressure	72172300



Electric valves

S53 – S40 Solenoid	262104
Cover	334965

S93 – S67 Motor-drive bypass	72374300
------------------------------------	----------

See Fittings for S series fittings

Part no.

www.hardi-international.com





HARDI INTERNATIONAL A/S

Helgeshøj Allé 38 • DK 2630 • Taastrup • Denmark
E-Mail: hardi@hardi-international.com • www.hardi-international.com

HIA MARKETING GB-99xxxx-06-2010

www.hardi-international.com

