

Spreparts F2/F2X



1/7 – 2017

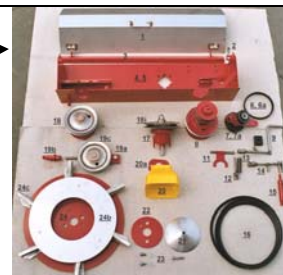
Example

Maskinfabrikken Bredal A/S

Reservedelspriser

SALG

Gruppe	Pos.nr.	Varenummer	Varenavn
FL1	FL101	03003089	Låg for spredeka
FL1	FL102	02004011	Krogbolt for låg t.
FL1	FL103	03003090	Forstærkningsvin



Find pos. nr. 03

Spareparts for F2

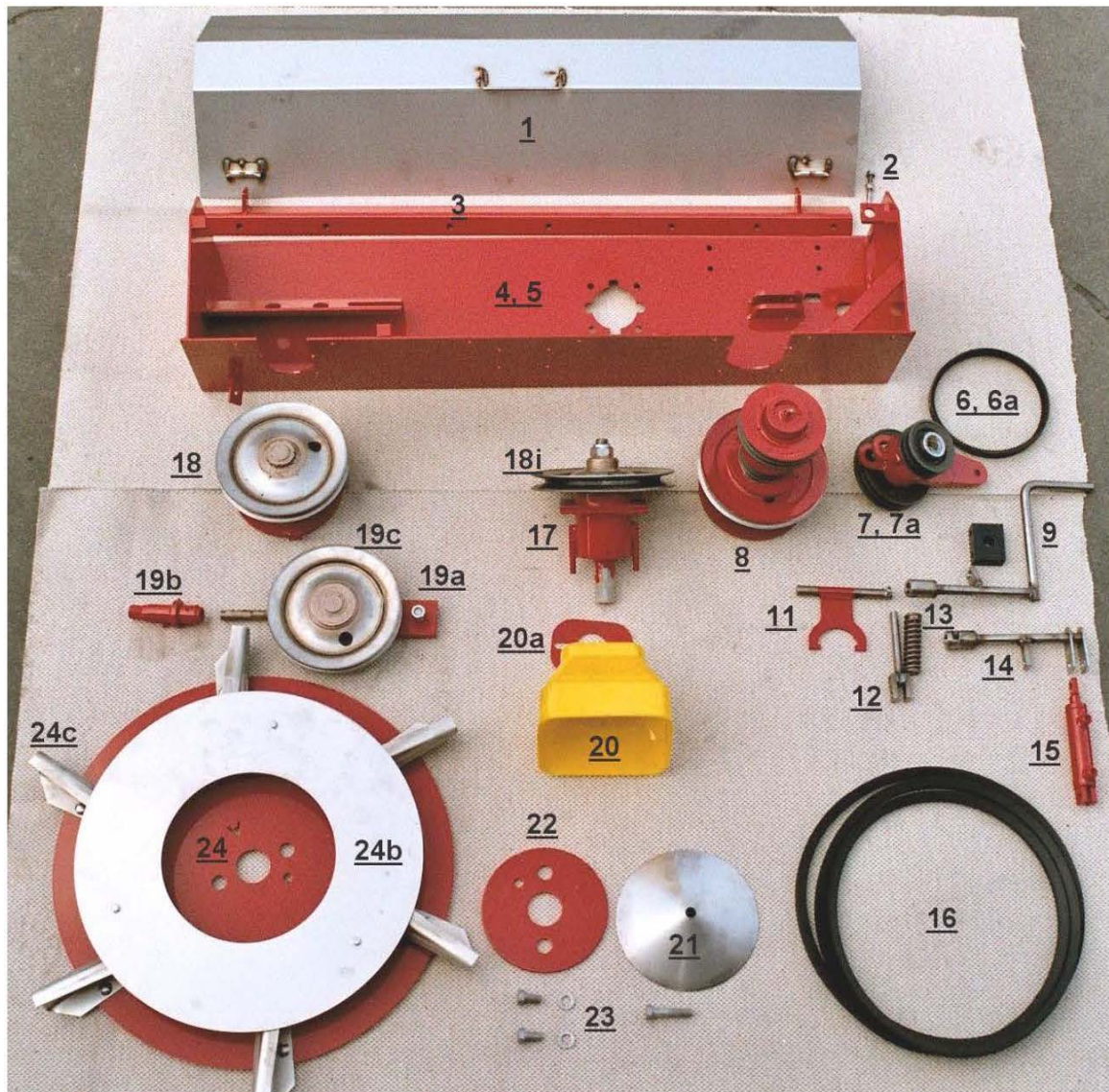
Content

Group FL1 Spreadunit SPC4500-1	5
Group KA Headlandgear in a SPC 4500-1 spreadunit.....	7
Group FL2 Rear door F2	9
Group FL3 Belt system F2	11
Group FL4 Belt system F2	13
Group FL5 Jack and Protecting pipe F2.....	15
Group FL6 Downshute and shield F2	17

Spareparts

Group	Pos. no.	Item no.	Description
FL1	FL101	03003089	Cover for spread box, stainless steel SP rom year 2002-> with ore without
FL1	FL101a	03014010	Cover for spread box,A2/A2X stainless steel SPC4500-1 (ready for headlan
FL1	FL101b	03003132	Cover for spread box stainless steel SPC4500-1 (from dec. 06) with quick
FL1	FL101c	03002247	T-pcs for quick lock of cover on SPC4500
FL1	FL101d	03002297	Snablock for stainless steel cover on SPC4500-1 spread unit
FL1	FL102	02004011	Hook bolt Stainless for SPC4500-1
FL1	FL102a	03002309	Bracket for quick lock in stainless for SPC4500-1 Cover
FL1	FL103	03003090	Enforcement angel SPC4500-1 from year 2002
FL1	FL103a	03003133	Enforcement angel SPC4500-1 from dec. 20
FL1	FL104	03001107	Spread box, empty SPC4500-1 for spreader year 2002 (ready for headland ge
FL1	FL104a	03001118	Spread box, empty SPC4500-1 A2/A2X (ready for headland gear)
FL1	FL105	03001111	Spread box SPC4500-1 compl. with headland gear (B2-B8 and F2) with
FL1	FL105a	03001113	Spread box SPC4500-1 compl. with headland gear and hydr. cylinder for A2
FL1	FL106	01010109	V-belt XPA 732 "KV23" for headland gear (4 pc. with 12-28 m headland gea
FL1	FL106a	01010110	V-belt XPA 807 for headland gear 18-36 m (2 pc. XPA 807 and 2 pc. XPA 732
FL1	FL107	03008847	Tightening fixture compl. for headland gear 12-28 m.
FL1	FL107a	03008848	Tightening fixture compl. for headland gear 28-36 m.
FL1	FL107b	03002229	Bolt M12 x 180 with spring and lock nut for tightening fixture on headlan
FL1	FL108	03008849	Headland gear compl. for 4500-1 with fla 160 x 160 mm (without tightening
FL1	FL109	03013052	Handle, for headland gear (stainless ste only for SPC4500-1 (lenght = 270
FL1	FL111	03013053	Shifter fork for headland gear
FL1	FL111b	01003505	Tube split 10*45
FL1	FL112	03013054	Spring axle for headland gear
FL1	FL113	01007017	Spring, stainless steel Ø33 x 113 mm for headland gear
FL1	FL114	03013055	Change arm for hydr. headland gear (only for A2/A2X and K35-K125)
FL1	FL115	03005022	Cylinder compl. for headland gear, guide plates and hydr. headland plate
FL1	FL115a	01016014	Gasket and top for hydr. cylinder for headland gear (only A2/A2X and K35-
FL1	FL116	01010102	V-belt SPC4500 each
FL1	FL117	02003047	Inlet axel compl. F2 SPC4500-1 with flange 220 x 220 mm and a pipe
FL1	FL117a	03002077	Bearing tube inlet axle for SPC4500-1 fo F2/F2X
FL1	FL117c	01003502	Woodruff key 10mm
FL1	FL117d	01015000	Bearing 6207
FL1	FL117e	02001004	Tightening ring Ø72 x Ø46 x 8
FL1	FL117f	01003400	Lock nut 1" WG
FL1	FL118	03008634	Top compl. right with pulley for SPC4500 (140 x 140 mm flange)
FL1	FL118a	03004005	Top for spread disc, short right SPC4500-1 Ø35 x 128 mm
FL1	FL118b	01003502	Woodruff key 10mm
FL1	FL118c	03003088	Distance ring Ø35 hole x 45 x 1,5 for to on spread discs
FL1	FL118d	01016351	Piston ring 90*5
FL1	FL118e	01015000	Bearing 6207
FL1	FL118f	03002072	Bearing tube short right SPB3150, SPB355 SPC4500-1 (up to year 2002)
FL1	FL118g	02001005	Distance tube for top spread disc SPC450 Ø35 x 61 mm
FL1	FL118g1	03003204	Distance tube for top spread disc SPC450 Ø35 x 36 mm
FL1	FL118h	01015000	Bearing 6207
FL1	FL118i	02007007	Pulley SPC225-1 ø35 hole, stainless stee
FL1	FL118j	01003404	Nut and lock washer "SKF" for top Ø35
FL1	FL119a	03002084	Tightening fixture ø35 SPC4500-1 A2, B2, and K35-K105
FL1	FL119b	01003405	Tube nut for SPC4500-1 A2, B2-B8, F2 and K35-K105
FL1	FL119c	02007009	Pulley SPC225-1 ø72 hole for tightner for A2, B2, F2 and K35-K125
FL1	FL119d	01015000	Bearing 6207
FL1	FL119e	01016252	Seeger ring 35a
FL1	FL119f	01016251	Seeger ring 72 i
FL1	FL120	01001300	Cardan shield (yellow)
FL1	FL120a	03002117	Mounting bracket for yellow guard
FL1	FL122	03015203	Washer for spread discs A2, F2 and K35-K
FL1	FL123	01003008	Set of bolts f. spread disc and conic pa A2, F2 and K35-K125

Group FL1 Spreadunit SPC4500-1 / Spredekasse SPC4500-1 / Streuwerk SPC4500-1



Spread box SPC4500-1 for F2/F2X, A2/A2X

01/07-17

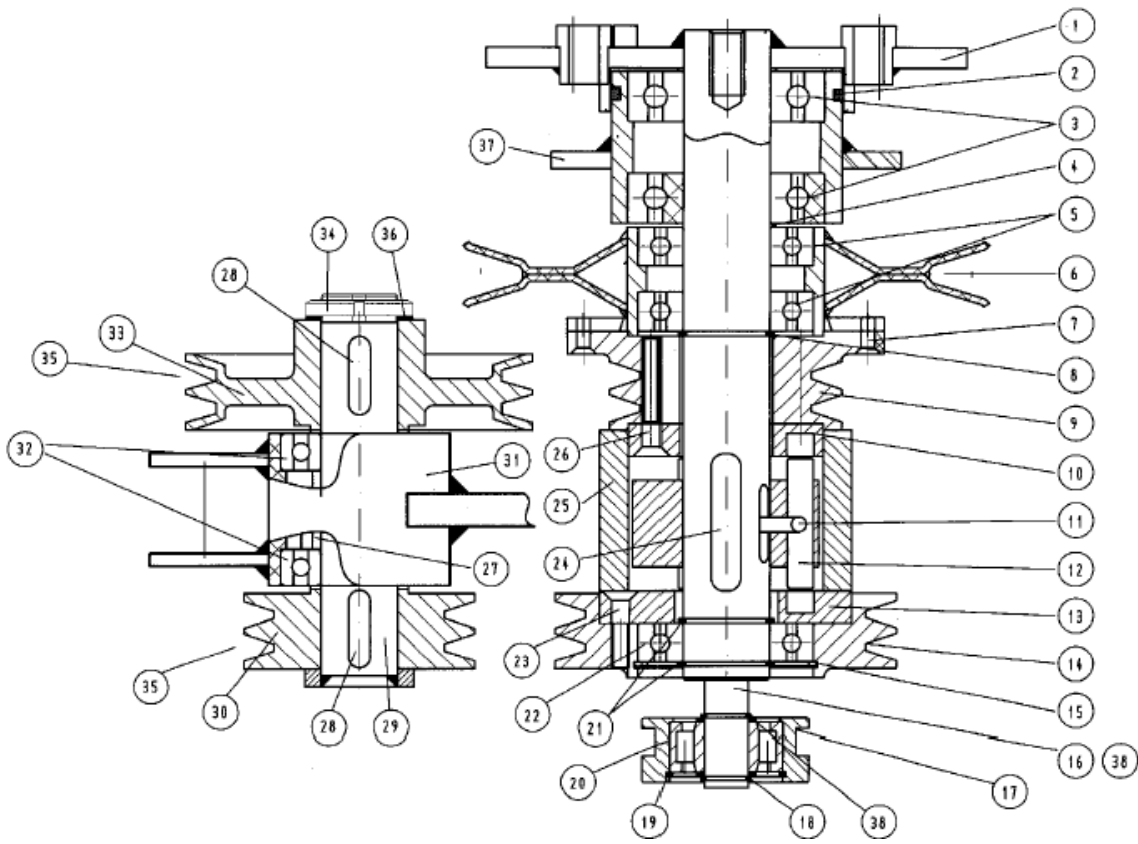
Spareparts

Group	Pos. no.	Item no.	Description
FL1	FL124a	03015120	Discs "A" 12-36 m Right
FL1	FL124b	03015204	Rondel (top disc for 6 vane kit) compl. with bolt and pipe. A2, F2 and K3
FL1	FL124c	03015020	Set of vanes 12-36m (12 pc.) with longlife Wolfram Carbid Coating
FL1	FL124d	03015003	Spread vane right ver.98-2 for 12-36 m a 12-36 m discs, A2, B2-B8, F2 and
FL1	FL124e	03015002	Spread vane left vers 98-2 for 12-36 m a 12-36 m discs, A2, B2-B8, F2 and
FL1	FL124ea	02004045	Bolt set stainless for spread vanes (12-
FL1	FL124f	01003014	Sets of bolts to suit rondels 12-36 m
FL1	FL125	01001103	PTO schaft w. overrun for (102) 6/6 910 mm (B2XL, B2ML, F2, F2X)
FL1	FL17c	03002307	Axle for bolt at tightening fixture 4500-1 headland gear

Spareparts

Group	Pos. no.	Item no.	Description
KA	ka01	03004019	Top for headland gear
KA	ka02	01016354	Piston ring 105x5
KA	ka03	01015001	Bearing 6308
KA	ka04	01003411	Distancering 41,5 x 55 x 1,5 mm For top for discs (SPC4500-2), headland
KA	ka05	01015012	Bearing 6208 (for inlex axel on SPC4500-1 from year 2001->)
KA	ka06	02007021	Pulley SPC 225/1 for headland gear
KA	ka07	01003018	Bolt, unbraco M8 x 25 mm (headland gear)
KA	ka08	01016256	Circlip Ø40a
KA	ka09	02007030	Pulley SPA 100-2, SPC4500-1 headlandgear (with 6 hole for M10x40 unbraco
KA	ka10	03004011	Clutchplate Ø90 headlandgear
KA	ka11	01003513	Steel pin Ø8x60 incl. 2 pcs M10 x 10 bolt. For 4500-1 and 2 headlandgear
KA	ka12	03004013	Clutch for 4500-1 headland gear
KA	ka13	03011083	Clutch plate Ø115 with 6 hole, 4500-2 headlandgear
KA	ka14	02007023	Pulley SPA 150-2 for headland gear
KA	ka15	01016258	Seegerring 80 i for headland gear
KA	ka16	03004014	Axel Ø20 mm, lenght 136,4 mm 4500-1 headland gear
KA	ka17	03004015	Wheel for 4500-1 and 2 headland gear
KA	ka18	01016259	Seegerring 20a x 1,75 for headland gear
KA	ka19	01016255	Seegerring 52i
KA	ka20	01015013	Bearing 3304 for Headland gear
KA	ka21	01016256	Circlip Ø40a
KA	ka22	01015012	Bearing 6208 (for inlex axel on SPC4500-1 from year 2001->)
KA	ka23	01003017	Nut, Umbraco M8x35 for headlandgear
KA	ka24	01003512	Not 10x8x56 for Headlandgear .
KA	ka25	01005224	PEH tube Ø110 x 10 x 74, 4500-1 headland
KA	ka26	01003016	Nut, unbraco M10x40 headlandgear
KA	ka27	03004016	Distancetube 1 1/4" x 36 for headlandgear
KA	ka28	01003502	Woodruff key 10mm
KA	ka29	03004017	Axle Ø35 mm for tightener on headland gear
KA	ka30	02007022	Pulley SPA 100-2 tightening fixture 12-28 Ø35 mm hole 37 mm hub lenght
KA	ka30a	02007025	Pulley SPA 150-2 tightening fixture 24-36 Ø35 mm hole, 37 mm hub lenght
KA	ka31	03004018	Housing for tightener, without bearings for headlandgear
KA	ka32	01015000	Bearing 6207
KA	KA33	02007029	Pulley SPA 150-2 for tightening fixture on SPC4500-1 headland gear
KA	ka34	01003404	Nut and lock washer "SKF" for top Ø35
KA	ka35	01010109	V-belt XPA 732 "KV23" for headland gear (4 pc. with 12-28 m headland gea
KA	ka35a	01010110	V-belt XPA 807 for headland gear 18-36 m (2 pc. XPA 807 and 2 pc. XPA 732
KA	ka36	01003410	Lockwascher MB7 for headlandgear
KA	ka37	03002142	Bearing tube right, short SPC4500-2
KA	ka38	01016017	Support ring Ø20/28 x 2 for wheel for headland gear
KA	ka39	03008891	Headland gear compl. for 4500-1 with fla 280 x 280 mm (without tightening
KA	ka40	03008849	Headland gear compl. for 4500-1 with fla 160 x 160 mm (without tightening

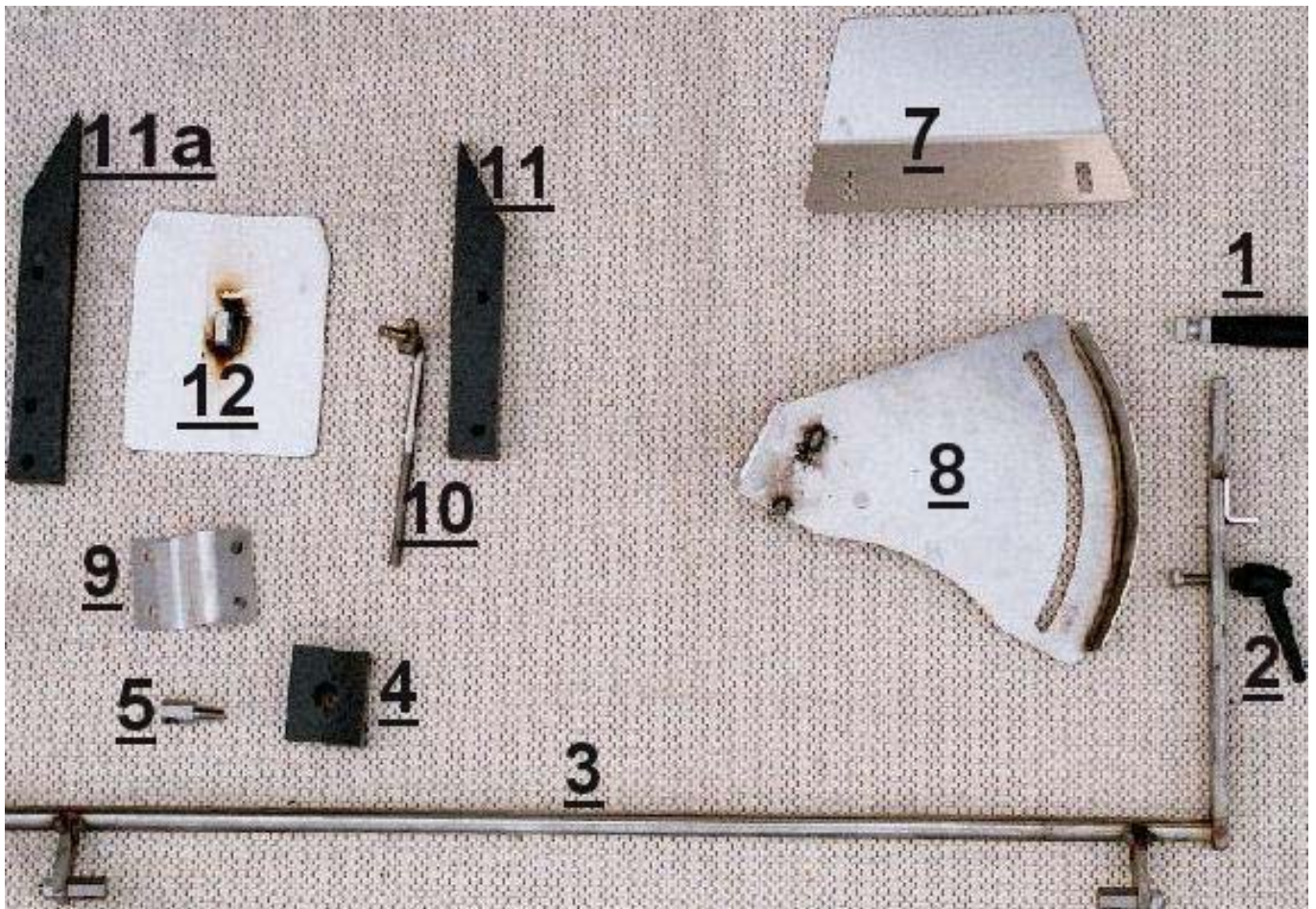
Group KA Headlandgear in a SPC 4500-1 spreadunit



Spareparts

Group	Pos. no.	Item no.	Description
FL2	FL201	01006101	Elesa handle for rear door on F2, B2-B8 and cover B2-B8, F2 and K40-K135
FL2	FL202	01006106	Elesa handle with lock nut for rear door F2/F2X
FL2	FL203	03013005	Adjusting axle for bulk head, stainless B2XL (from 02->) F2 and Miedema
FL2	FL204	02006306	Nylon bearing Ø19 mm for dosering axle and headland gear
FL2	FL205	02006200	Connection link
FL2	FL207	03003041	Stickle, right B2/B3/F2/F2X, stainless steel
FL2	FL207a	03003040	Stickle, left B2/B3/F2/F2X, stainless steel
FL2	FL208	03002097	Scale fixture with scale, stainless steel B2XL and F2/F2X
FL2	FL209	03003098	Bracket, for plastic piece on bulk head F2/F2X
FL2	FL210	03002180	Adjusting bolt, stainless steel with 10 nut for bulk head F2/F2X
FL2	FL211	02006307	Plastic piece for bulk head B2XL/B3XL and F2/F2X, outside with 3 hole
FL2	FL211a	02006308	Plastic piece for bulk head B2XL/B3XL and F2/F2X, inside with 2 hole
FL2	FL212	03014009	Bulk head, stainless steel B2XL (from 20 and F2/F2X
FL2	FL213	01014030	Aktuator, Linak (for electr. control of reardoor) F2/F2X and B2/B2XL

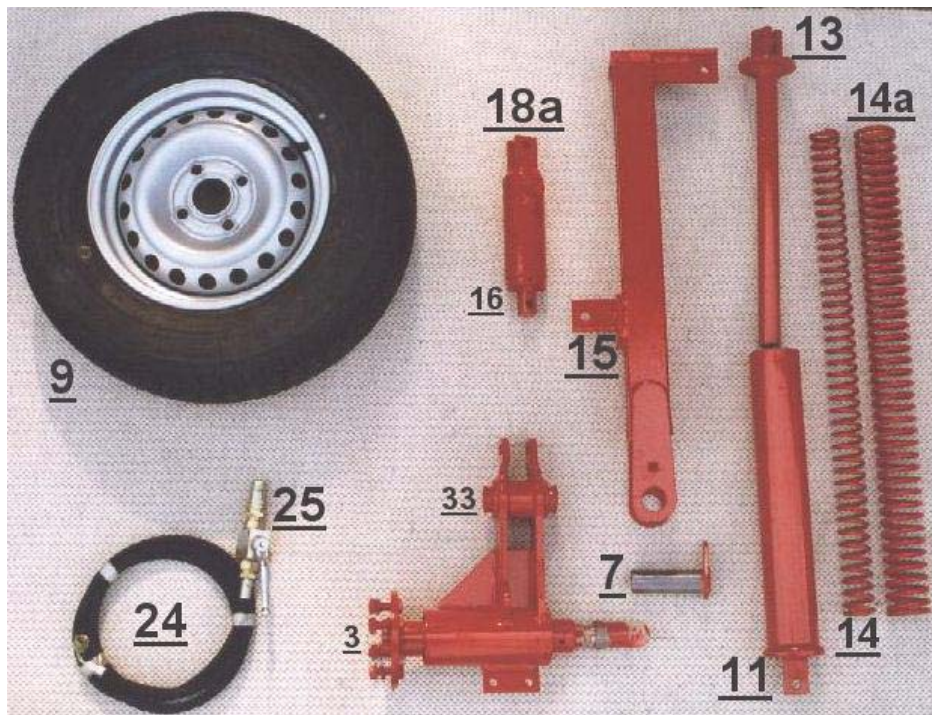
Group FL2 Rear door F2 / Baglåge F2 / Hinterlucke F2



Spareparts

Group	Pos. no.	Item no.	Description
FL3	FL301	02001006	Bushing for dose wheel, B2/B3/F2
FL3	FL301a	02001007	Bushing for thermalphial B2/B3/F2
FL3	FL302	01016102	Tightening Z207 Year 92 ->
FL3	FL303	03004001	Axle with hub compl. B2/B3/F2 Ø35x320 wi bracket
FL3	FL304	01003588	Bolt set, hub for dose wheel M12 x 35 (4 pcs) incl. Konic washer
FL3	FL305	01015000	Bearing 6207
FL3	FL306	03002303	Rocker arm B2XL & F2 (from year 1998) co
FL3	FL306a	01016003	Seal kit for Ø30 mm cylinder vers. 1-2-3-4-5
FL3	FL306b	03005003	Cylinder head Ø30 mm with gasket vers 1-2-3-4-5
FL3	FL307	02003012	Bolt for linkage arm B2/B3 Ø35x105
FL3	FL309	01020009	Wheel 165 x 13 for chain gear
FL3	FL311	03002087	Spring pipe B2/3 for dose wheel
FL3	FL313	03002088	Spring guide B2/3
FL3	FL314	01007006	Spring inner B2/B3/F2 (L = 760 mm, diameter Ø48 mm)
FL3	FL314a	01007007	Outer spring B2/B3/F2 (L = 745 mm, diameter Ø 65 mm)
FL3	FL315	03002089	Wheel drive arm B2/B3/F2
FL3	FL316	01016003	Seal kit for Ø30 mm cylinder vers. 1-2-3-4-5
FL3	FL317	03005003	Cylinder head Ø30 mm with gasket vers 1-2-3-4-5
FL3	FL318	03005006	Cylinder for dose wheel B2/B3/F2
FL3	FL318a	03008304	Cylinder compl. Ø30 for dose wheel B2/B3
FL3	FL320	03005007	Piston for dose wheel B2/B3/F2
FL3	FL321	03002090	Piston top
FL3	FL324	01012153	Hydraulic hose for B2/F2 with ball valve 1/4" 2500 mm
FL3	FL325	01012251	Ball valve 1/2" w. handle
FL3	FL326	01012252	Handle for Ball valve
FL3	FL327	01012000	Coupling for ball valve ½"
FL3	FL328	01012001	Fixture for hydr. coupling
FL3	FL328a	03002317	Bracket for 4 pcs of hydraulic couplings in stainless steel
FL3	FL329	01003202	Bolt for parallel link L=200 mm x 20 mm
FL3	FL330	03002091	Lowest holder for dose wheel B2/B3/F2
FL3	FL331	03002092	Middle holder for dose wheel B2/B3/F2
FL3	FL332	03002093	Top holder for dose wheel B2/B3/F2
FL3	FL333	02001000	Brass bushing (2 pc.per arm)35 x 43 x 25
FL3	FL334	03002014	Console for counter B2/B3/F2
FL3	FL335	01014001	Mek. counter B2/B3/F2
FL3	FL336	03003002	Cover for counter B2/B3/F2
FL3	FL337	01002102	Rubberstrap for cover 3 step
FL3	FL338	03008484	Cage wheels system compl. for B2/F2 (without wheel and hydr. hoses)

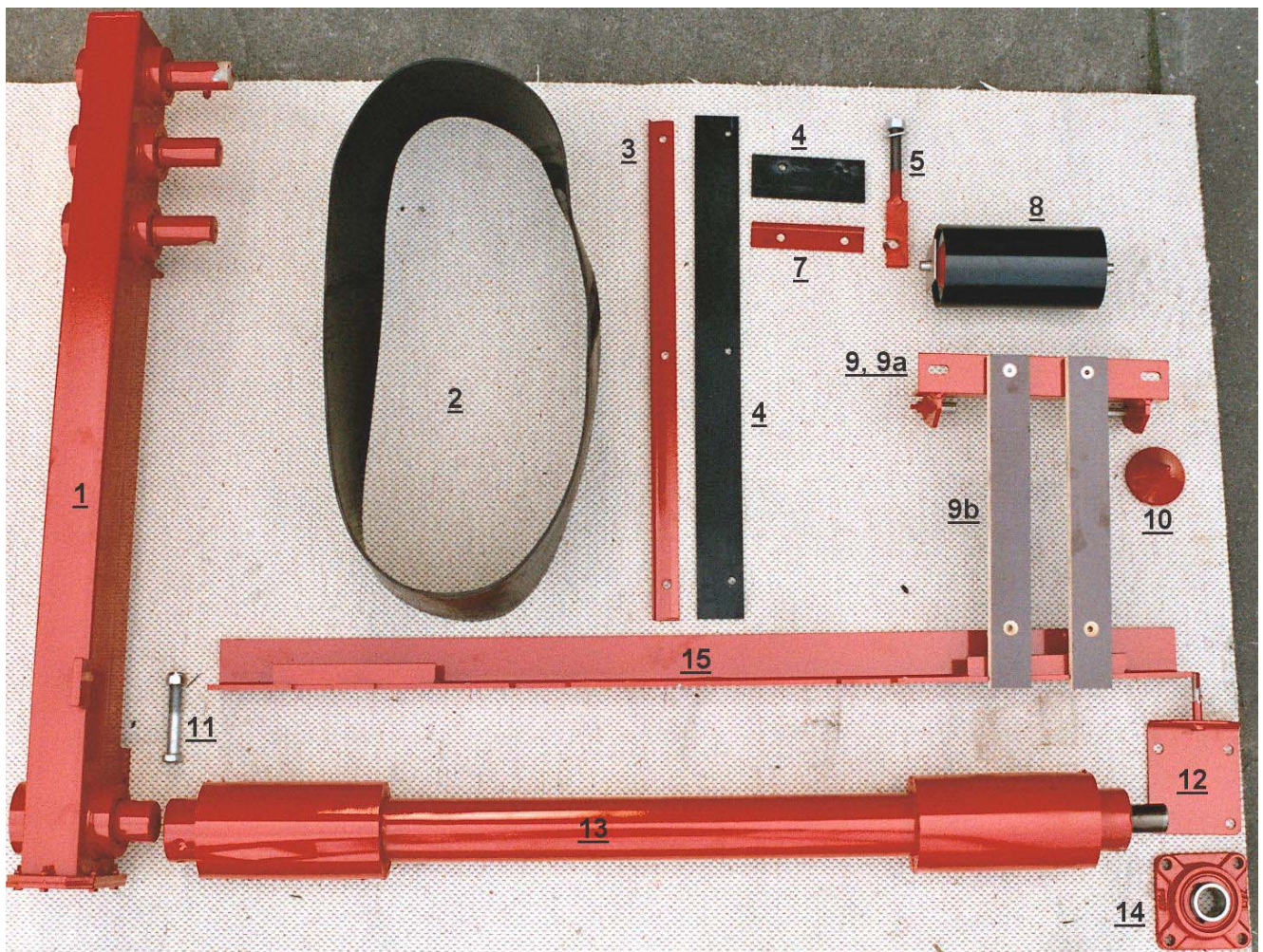
Group FL3 Belt system F2 / Båndsystem F2 / Bodensystem F2



Spareparts

Group	Pos. no.	Item no.	Description
FL4	FL401	03008006	3 step chain gear compl. vers. 2 for B2XL/B2ML & F2/F2X
FL4	FL402	01010009	Floorbelt B2, B2XL, B2ML and F2/F2X
FL4	FL403	03003042	Edging beam (set) B2, B2XL, B2ML and F2/ (2 set per spreader)
FL4	FL404	01010007	Side rubber (1 set) B2, B2XL, B2ML and F2/F2X incl. front rubber (2 set p
FL4	FL405	02004012	Tightening bolt for front roller B2/B3, F2/F2X per piece (4 pc per sprea
FL4	FL406	01010006	Front rubber B2/B3 and F2/F2X per pc
FL4	FL407	03003044	Beam for thigtening rubber per pc. B2/B3 F2/F2X
FL4	FL408	01006003	Front roller B2/B3/F2/F2X
FL4	FL409	03002178	Carrying fixture for belt, front (right F2/F2X (without guide rollers)
FL4	FL409a	03002179	Carrying fixture for belt, front (left s F2/F2X (without guide rollers)
FL4	FL409b	03002101	Carrying list for floorbelt B2/F2/F2X (p 4 pc per spreader
FL4	FL410	02005000	Guide rollers, small for (B2/F2) and sand conveyor
FL4	FL411	01003104	Bolt and nut (16 x 90) for rear roller B2/F2
FL4	FL412	03002017	Adjusting fixture for bearing B2/B3/F2/F
FL4	FL413	03006004	Rear roller B2-B3 and F2-F2X
FL4	FL414	01015002	Flanged Bearing FY35
FL4	FL415	03003095	Guide for belt frame F2/F2X

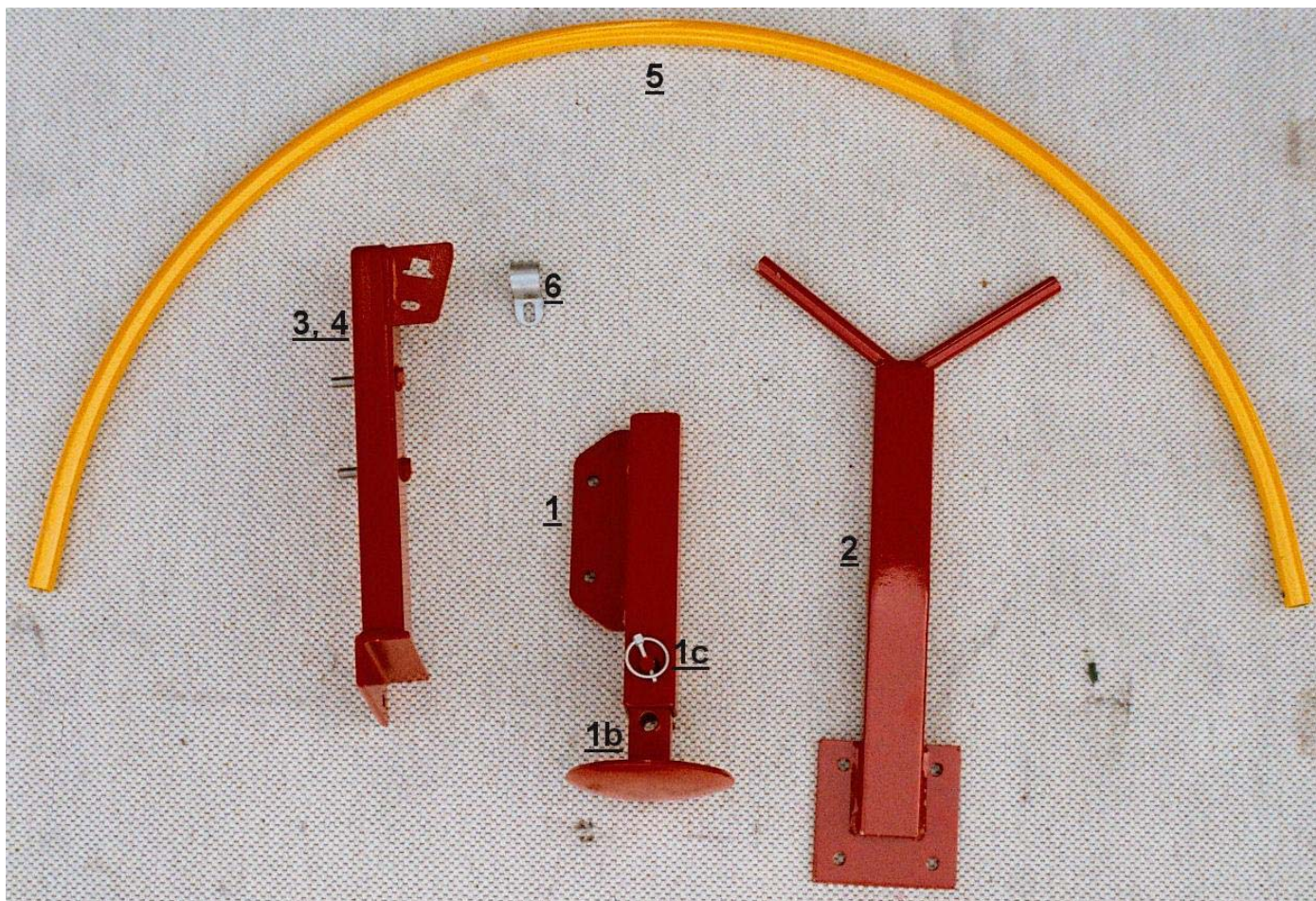
Group FL4 Belt system F2 / Bånd system F2 / Bodenbandsystem F2



Spareparts

Group	Pos. no.	Item no.	Description
FL5	FL501	03008455	Strut compl. F2/F2X (left side "front")
FL5	FL501a	03008456	Strut compl. F2/F2X (right and left side rear and front right side)
FL5	FL501b	03002103	Strut part B2 and F2/F2X
FL5	FL501c	03008457	Lock part for strut leg B2, F2/F2X
FL5	FL502	03002062	Fixture protecting pipe middle
FL5	FL503	03002063	Fixture protecting pipe left
FL5	FL504	03002064	Fixture protecting pipe right
FL5	FL505	03003031	Protecting pipe(2 pc = 1 set) stainless
FL5	FL506	02004006	Tightening for pro.pipe
FL5	FL507	03008482	Pin cat. 2 (set of 3 pins)
FL5	FL508	03008481	Pin cat 3 (set of 3 pins)

Group FL5 Jack and Protecting pipe F2 / Støtteben og sikkerhedsbøjler F2 / Stutzbein und Schutzbügel F2



Spareparts

Group	Pos. no.	Item no.	Description
FL6	FL601	01003105	Bolt, countersink 8 x 20 mm for downshut on F2 and A2
FL6	FL602	01003106	Guide washer for downshute A2/F2
FL6	FL603	01003107	Washer 12 x 35 for downshute, A2/F2
FL6	FL604	03007022	Downshute, right F2/F2X
FL6	FL604a	03007023	Downshute, left F2/F2X
FL6	FL605	03007029	Bracket set for downshute, right F2/F2X
FL6	FL605a	03007030	Bracket set for downshute, left F2/F2X
FL6	FL606	03007031	Plate, right with scale for downshute F2
FL6	FL606a	03007032	Plate, left with scale for downshute F2/
FL6	FL607	01006105	Mizzen topsail with bolt for downshute F2/F2X
FL6	FL608	03003096	Deflektorplate F2/F2X
FL6	FL609	03003097	Top cover stainless steel, over spread discs F2/F2X
FL6	FL610	03009006	Platform (s.s.) incl. ladder for F2/F2W

Group FL6 Downshute and shield F2 / Nedløb og skærm F2 / Rutsche und Shirm F2





Bredal A/S
Nimvej 1
DK-7120 Vejle Øst
Tel : (+45) 75895177
Mail : info@bredal.com
Web : www.bredal.com
iPaper : docs.bredal.com