

Spareparts A2/A2X



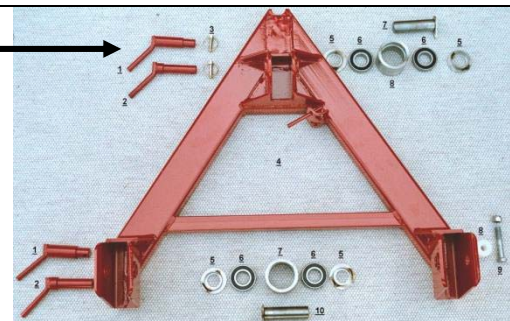
1/7 – 2017

Example

Maskinfabrikken Bredal A/S

SALG Reservedelspriser A-ramme A

Gruppe	Pos.nr.	Varenummer	Varenavn
A2b	A2b01	02004042	Bolt for koblingsøje samt tops
A2b	A2b02	02004013	Bolt for nederste koblingsøjer
A2b	A2b03	01003518	Ringsplit 10 mm (A-ramme A2
A2h	A2h04	03008459	A-ramme kompl. for A2



Find pos. nr. A2b01

Spareparts for A2

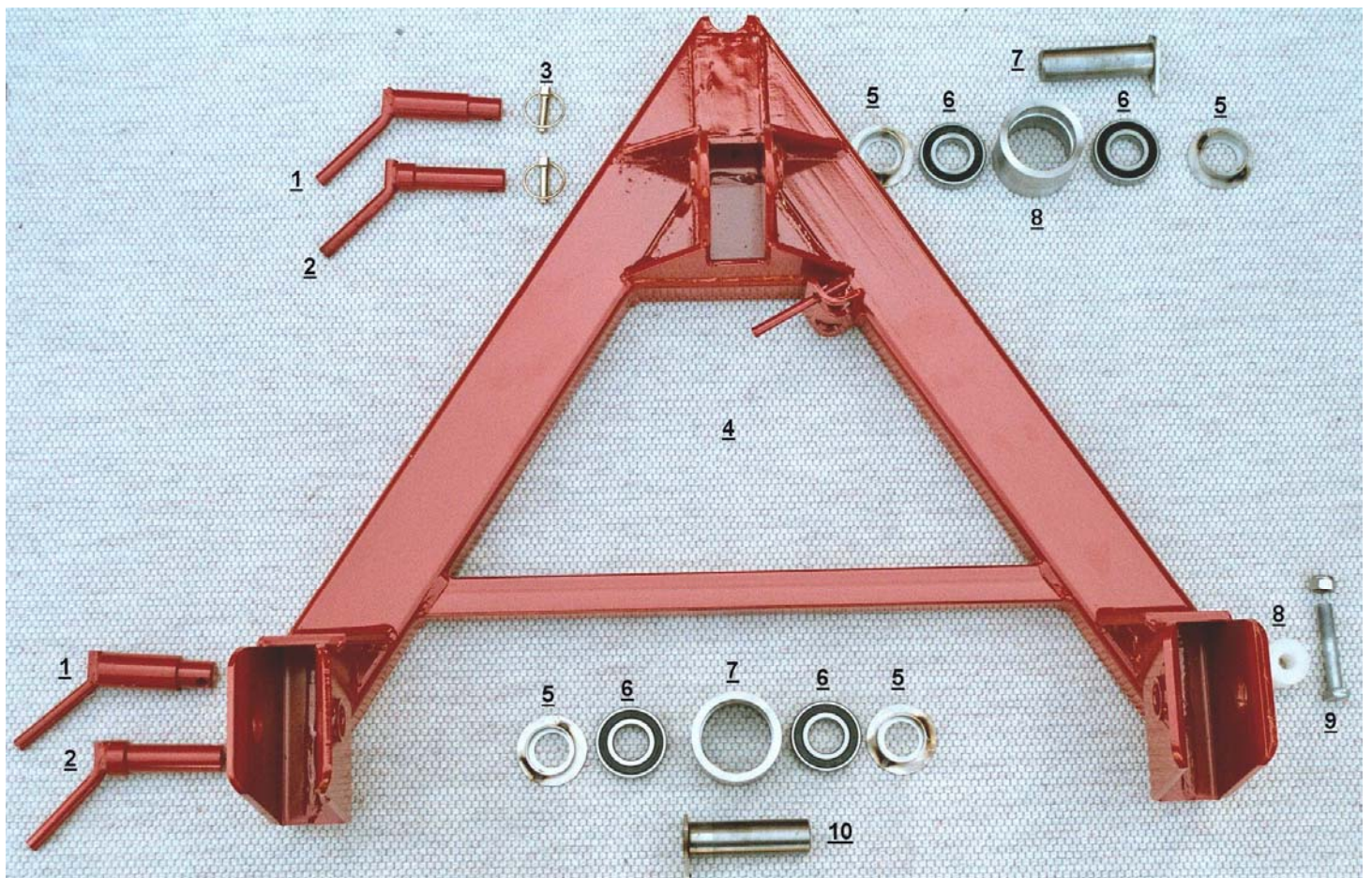
Content

A-frame.....	5
Shield and Strut	7
Gearbox and cell wheels.....	9
Spread box SPC4500-1 with headland gear	11
Group KA Headland gear in SPC 4500-1 spreadbox.....	13

Spareparts

Group	Pos. no.	Item no.	Description
A2b	A2b01	02004042	Bolt for coupling A2/B2/F2/TX cat.3
A2b	A2b02	02004013	Bolt for standard coupling A2/B2/F2/TX "
A2b	A2b03	01003518	Ringsplit 10mm
A2b	A2b04	03008459	A-frame compl. for A2
A2b	A2b05	03002197	Sealing "stainless" for roller, frame A2
A2b	A2b06	01015000	Bearing 6207
A2b	A2b07	03002198	Tube "stainless", frame A2
A2b	A2b08	02001021	Nylon roller, frame A2
A2b	A2b09	01003109	Bolt for nylon roller A2
A2b	A2b10	03002199	Bolt "Stainless" ø35mm for A-frame

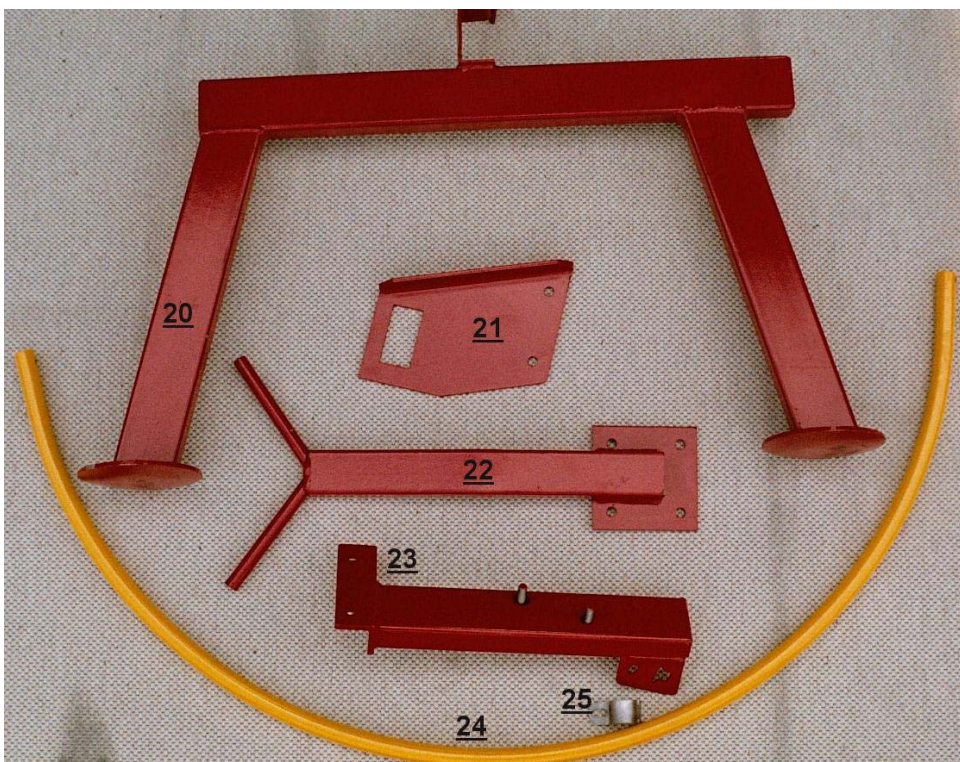
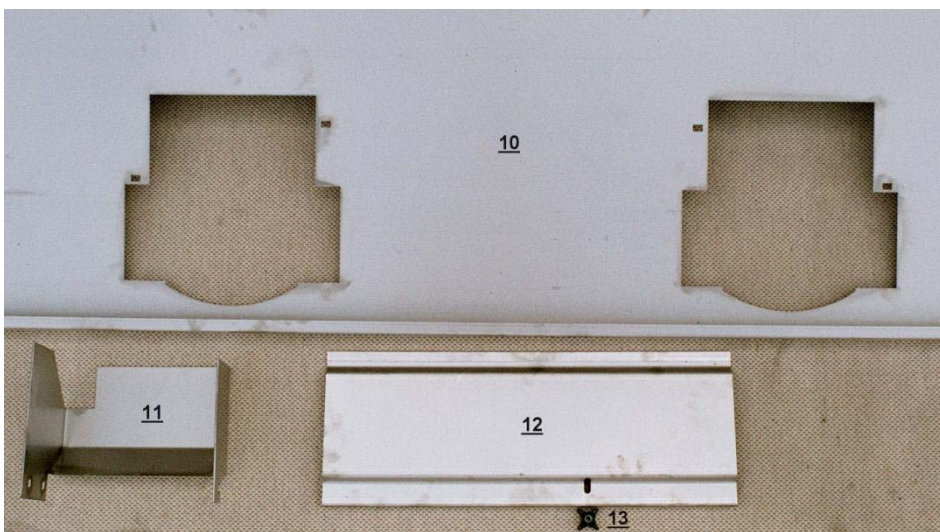
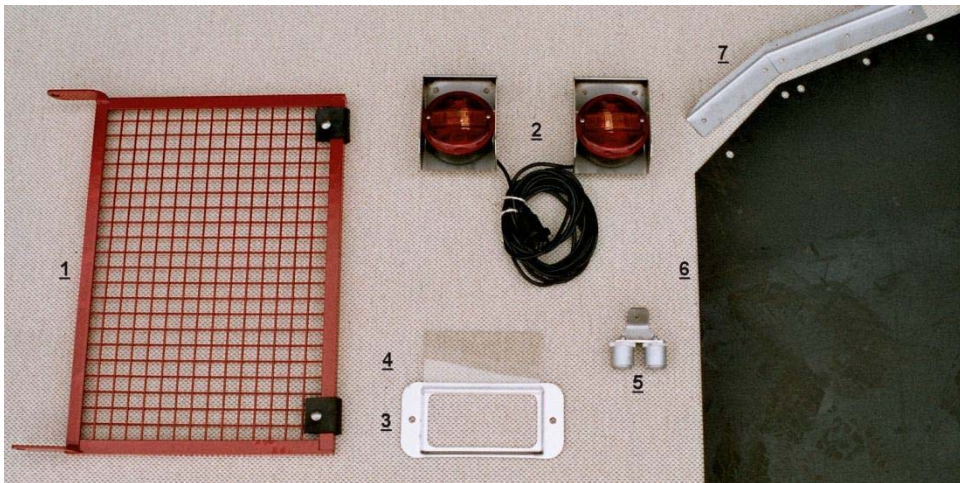
A-frame, A-ramme / A-Rahmen



Spareparts

Group	Pos. no.	Item no.	Description
A2a	A2a01	03003047	Hopper screen for B2/A2/F2/TX
A2a	A2a02	03008504	Light kit LED compl. with stainless steel bracket A2/B2/F2/TX
A2a	A2a03	03008751	Window compl. with stainless steel frame
A2a	A2a04	02006000	Window w/o frame
A2a	A2a05	03002196	Bracket for hydr. hoses A2/F2/TX
A2a	A2a06	02006007	Rubber for Mud flap A2
A2a	A2a07	03003115	Band (angled) for Mud flap A2
A2a	A2a10	03003116	Guard plate over discs A2
A2a	A2a11	03003117	Guard plate around cell wheel A2
A2a	A2a12	03003118	Guard plate over actuator A2
A2a	A2a13	01006105	Mizzen topsail with bolt for downshute F2/F2X
A2a	A2a20	03008458	Strut incl. frame for A2
A2a	A2a21	03003119	Bracket for strut A2
A2a	A2a22	03002062	Fixture protecting pipe middle
A2a	A2a23a	03002063	Fixture protecting pipe left
A2a	A2a23b	03002064	Fixture protecting pipe right
A2a	A2a24	03003031	Protecting pipe(2 pc = 1 set) stainless
A2a	A2a25	02004006	Tightening for pro.pipe
A2a	A2a26	01007022	Gas cylinder for ladder "A2"

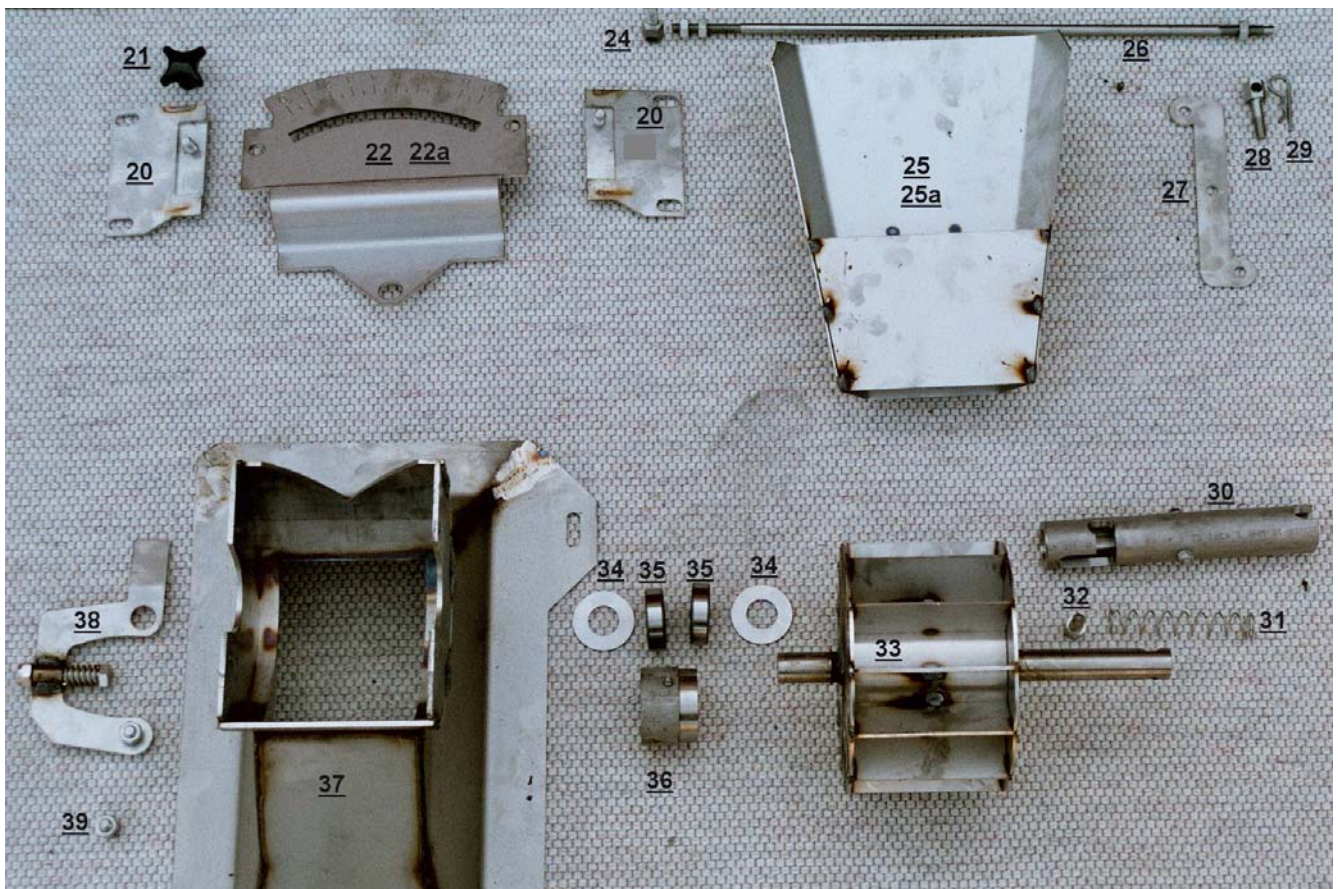
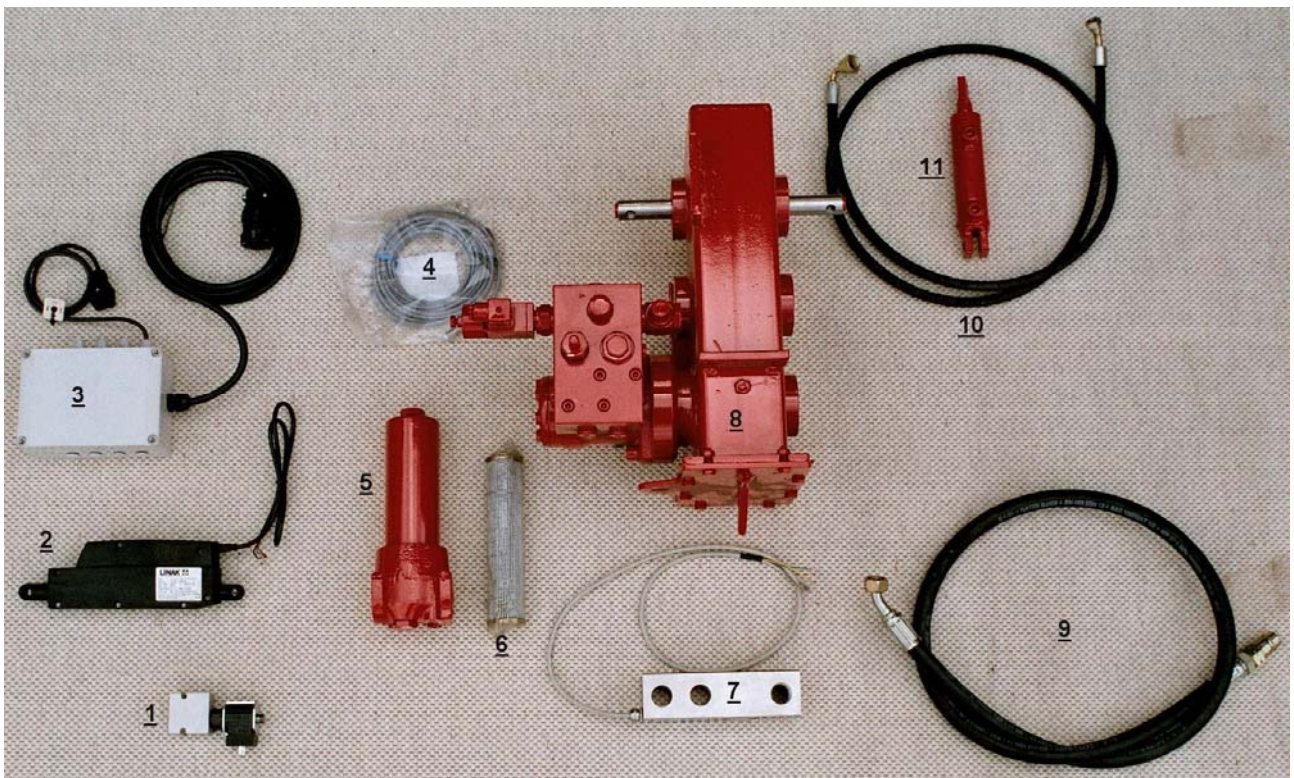
Shield and Strut / Skærme og støtteben / Schirm und Stutzbein



Spareparts

Group	Pos. no.	Item no.	Description
A2c	A2c01	01023079	12 volt valve for hydr. change of headland gear (A2, F2, TX, K40-K165)
A2c	A2c03	01023072	Controlboks, LH500 system (grey boks)910 for K- spreader without weight i
A2c	A2c03a	01023071	Cabel (22 pin) for A2/F2/TX 3,5 meter (between print plate and TeeJet 50
A2c	A2c04	01014036	
A2c	A2c04a	01023070	Sensor with 7 pin plug (speed)for A2/F2 and TX (TeeJet no. 926-982 for co
A2c	A2c06	01012307	Filter (insertion) for LH500 computer (A2 from year 2003 and all K-spread
A2c	A2c06a	01012426	Protortional valve for LH500 hydr. system
A2c	A2c07	01023078	Load cell A2
A2c	A2c08	03001018	Gear compl. for cell wheels A2 (Valve+mo
A2c	A2c09	01012187	Hydr. hose A2 (1/2" 1650 mm) only for A2 from juli-> 2003
A2c	A2c09a	01012188	Hydr. hose A2 (1/2" 1750 mm) nur für A2 von juli-> 2003
A2c	A2c09b	01012186	Hydr. hose A2 (1/4" 2200 mm) only for A2 from juli-> 2003
A2c	A2c09c	01012185	Hydr. hose A2 (1/4" 2900 mm) only for A2 from juli-> 2003
A2c	A2c09d	01012184	Hydr. hose, A2 (1/4" 1850 mm) only for A2 from juli-> 2003
A2c	A2c09e	01012183	Hydr. hose, A2 (1/4" 2100 mm) for A2 from year 2001- juni 2003
A2c	A2c09f	01012182	Hydr. hose, A2 (1/4" 1900 mm) for A2 from year 2001- juni 2003
A2c	A2c09g	01012181	Hydr. hose, A2 (1/2" 1600 mm) (2 pc. per spreader)
A2c	A2c09h	01012180	Hydr. hose, A2 (1/2" 330 mm) for A2 from year 2001- juni 2003
A2c	A2c20	03007029	Bracket set for downshute, right F2/F2X
A2c	A2c20a	03007030	Bracket set for downshute, left F2/F2X
A2c	A2c21	01006105	Mizzen topsail with bolt for downshute F2/F2X
A2c	A2c22	03007031	Plate, right with scale for downshute F2
A2c	A2c22a	03007032	Plate, left with scale for downshute F2/
A2c	A2c25	03007077	downchute A2, left
A2c	A2c25a	03007078	Downchute A2, right
A2c	A2c26	03007079	Threaded pin, from downchute to actuator
A2c	A2c27	03007081	Connction from down chute to actuator
A2c	A2c28	02006200	Connection link
A2c	A2c29	01003517	Split 3mm "stainless"
A2c	A2c30	03002202	Tube for shaft, for cell whells
A2c	A2c31	01007023	Spring, stinless steel for lock on cell wheel on A2 spreader
A2c	A2c32	01003111	Bolt, unbraco 10x20
A2c	A2c33	03018000	Cell wheel A2
A2c	A2c33a	03018001	Cell wheel A2/A2X rape and slug pellet (2 pc.) 4,5 cm3
A2c	A2c33b	03018002	Cell wheel A2/A2X for
A2c	A2c34	03002201	Washer ø25mm
A2c	A2c35	01015004	Bearing 6205
A2c	A2c36	03002200	Bushing "stainless" for 6205 Bearing (ce
A2c	A2c37	03018013	Funnel for cell wheel
A2c	A2c38	03018012	Spanner right for cell wheel
A2c	A2c38a	03018011	Spanner left for cell whhel
A2c	A2c39	01003110	Bolt for spanner, cell wheel A2

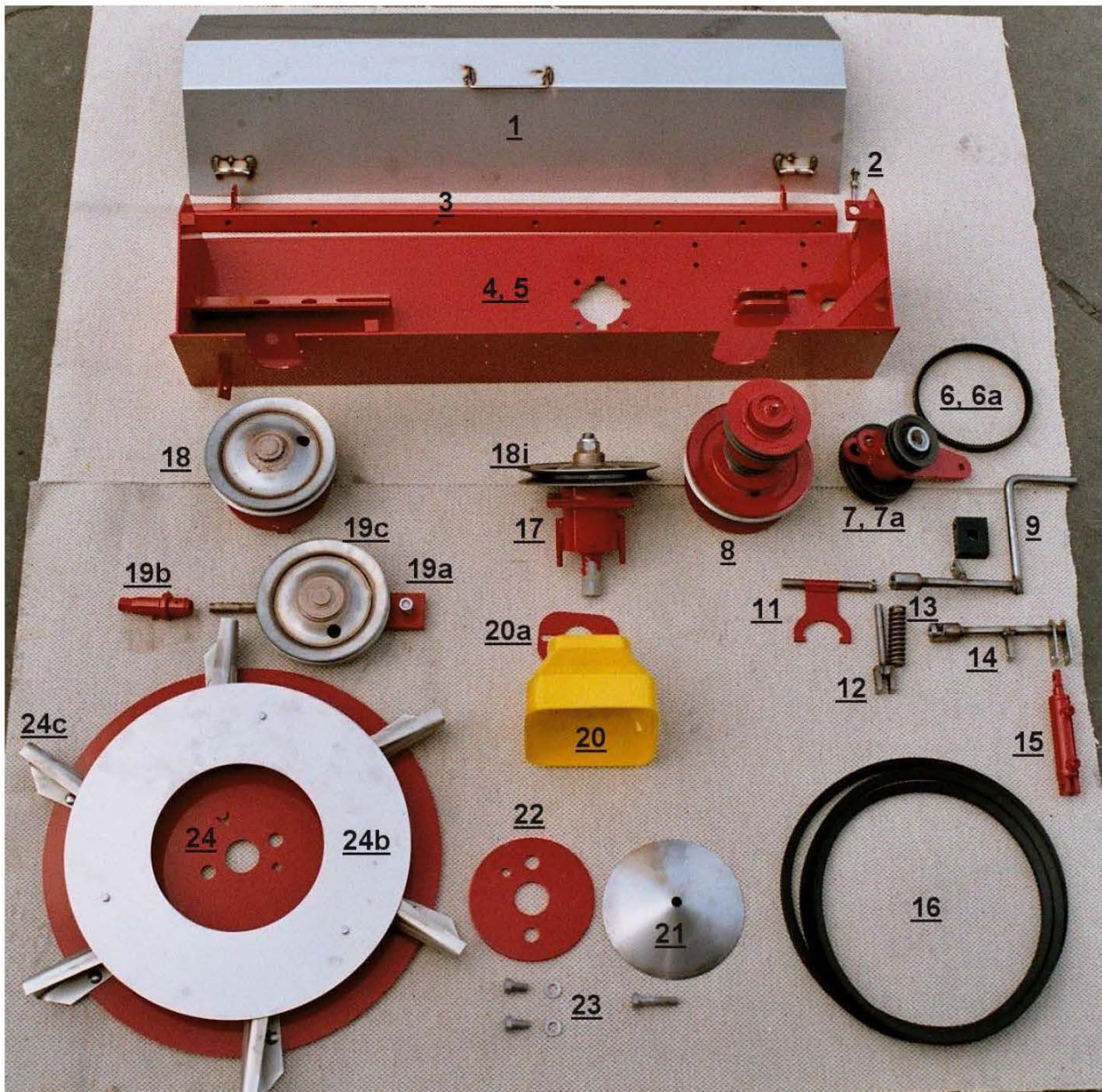
Gearbox and cell wheels / Gearkasse og cellehjul / Getriebe und Zellenräder



Spareparts

Group	Pos. no.	Item no.	Description
FL1	FL101	03003089	Cover for spread box, stainless steel SP rom year 2002-> with ore without
FL1	FL101a	03014010	Cover for spread box,A2/A2X stainless steel SPC4500-1 (ready for headlan
FL1	FL101b	03003132	Cover for spread box stainless steel SPC4500-1 (from dec. 06) with quick
FL1	FL101c	03002247	T-pcs for quick lock of cover on SPC4500
FL1	FL101d	03002297	Snablock for stainless steel cover on SPC4500-1 spread unit
FL1	FL102	02004011	Hook bolt Stainless for SPC4500-1
FL1	FL102a	03002309	Bracket for quick lock in stainless for SPC4500-1 Cover
FL1	FL103	03003090	Enforcement angel SPC4500-1 from year 2002
FL1	FL103a	03003133	Enforcement angel SPC4500-1 from dec. 20
FL1	FL104	03001107	Spread box, empty SPC4500-1 for spreader year 2002 (ready for headland ge
FL1	FL104a	03001118	Spread box, empty SPC4500-1 A2/A2X (ready for headland gear)
FL1	FL105	03001111	Spread box SPC4500-1 compl. with headland gear (B2-B8 and F2) with
FL1	FL105a	03001113	Spread box SPC4500-1 compl. with headland gear and hydr. cylinder for A2
FL1	FL106	01010109	V-belt XPA 732 "KV23" for headland gear (4 pc. with 12-28 m headland gea
FL1	FL106a	01010110	V-belt XPA 807 for headland gear 18-36 m (2 pc. XPA 807 and 2 pc. XPA 732
FL1	FL107	03008847	Tightening fixture compl. for headland gear 12-28 m.
FL1	FL107a	03008848	Tightening fixture compl. for headland gear 28-36 m.
FL1	FL107b	03002229	Bolt M12 x 180 with spring and lock nut for tightening fixture on headlan
FL1	FL108	03008849	Headland gear compl. for 4500-1 with fla 160 x 160 mm (without tightening
FL1	FL109	03013052	Handle, for headland gear (stainless ste only for SPC4500-1 (lenght = 270
FL1	FL111	03013053	Shifter fork for headland gear
FL1	FL111b	01003505	Tube split 10*45
FL1	FL112	03013054	Spring axle for headland gear
FL1	FL113	01007017	Spring, stainless steel Ø33 x 113 mm for headland gear
FL1	FL114	03013055	Change arm for hydr. headland gear (only for A2/A2X and K35-K125)
FL1	FL115	03005022	Cylinder compl. for headland gear, guide plates and hydr. headland plate
FL1	FL115a	01016014	Gasket and top for hydr. cylinder for headland gear (only A2/A2X and K35-
FL1	FL116	01010102	V-belt SPC4500 each
FL1	FL117	02003047	Inlet axel compl. F2 SPC4500-1 with flange 220 x 220 mm and a pipe
FL1	FL117a	03002077	Bearing tube inlet axle for SPC4500-1 fo F2/F2X
FL1	FL117c	01003502	Woodruff key 10mm
FL1	FL117d	01015000	Bearing 6207
FL1	FL117e	02001004	Tightening ring Ø72 x Ø46 x 8
FL1	FL117f	01003400	Lock nut 1" WG
FL1	FL118	03008634	Top compl. right with pulley for SPC4500 (140 x 140 mm flange)
FL1	FL118a	03004005	Top for spread disc, short right SPC4500-1 Ø35 x 128 mm
FL1	FL118b	01003502	Woodruff key 10mm
FL1	FL118c	03003088	Distance ring Ø35 hole x 45 x 1,5 for to on spread discs
FL1	FL118d	01016351	Piston ring 90*5
FL1	FL118e	01015000	Bearing 6207
FL1	FL118f	03002072	Bearing tube short right SPB3150, SPB355 SPC4500-1 (up to year 2002)
FL1	FL118g	02001005	Distance tube for top spread disc SPC450 Ø35 x 61 mm
FL1	FL118g1	03003204	Distance tube for top spread disc SPC450 Ø35 x 36 mm
FL1	FL118h	01015000	Bearing 6207
FL1	FL118i	02007007	Pulley SPC225-1 ø35 hole, stainless stee
FL1	FL118j	01003404	Nut and lock washer "SKF" for top Ø35
FL1	FL119a	03002084	Tightening fixture ø35 SPC4500-1 A2, B2, and K35-K105
FL1	FL119b	01003405	Tube nut for SPC4500-1 A2, B2-B8, F2 and K35-K105
FL1	FL119c	02007009	Pulley SPC225-1 ø72 hole for tightner for A2, B2, F2 and K35-K125
FL1	FL119d	01015000	Bearing 6207
FL1	FL119e	01016252	Seeger ring 35a
FL1	FL119f	01016251	Seeger ring 72 i
FL1	FL120	01001300	Cardan shield (yellow)
FL1	FL120a	03002117	Mounting bracket for yellow guard
FL1	FL122	03015203	Washer for spread discs A2, F2 and K35-K
FL1	FL123	01003008	Set of bolts f. spread disc and conic pa A2, F2 and K35-K125

Spread box SPC4500-1 with headland gear / Spredekasse SPC4500-1 med kantgear /
Streuwerk SPC4500-1 mit Grenzstreugetriebe



Spread box SPC4500-1 for F2/F2X, A2/A2X

01/07-17

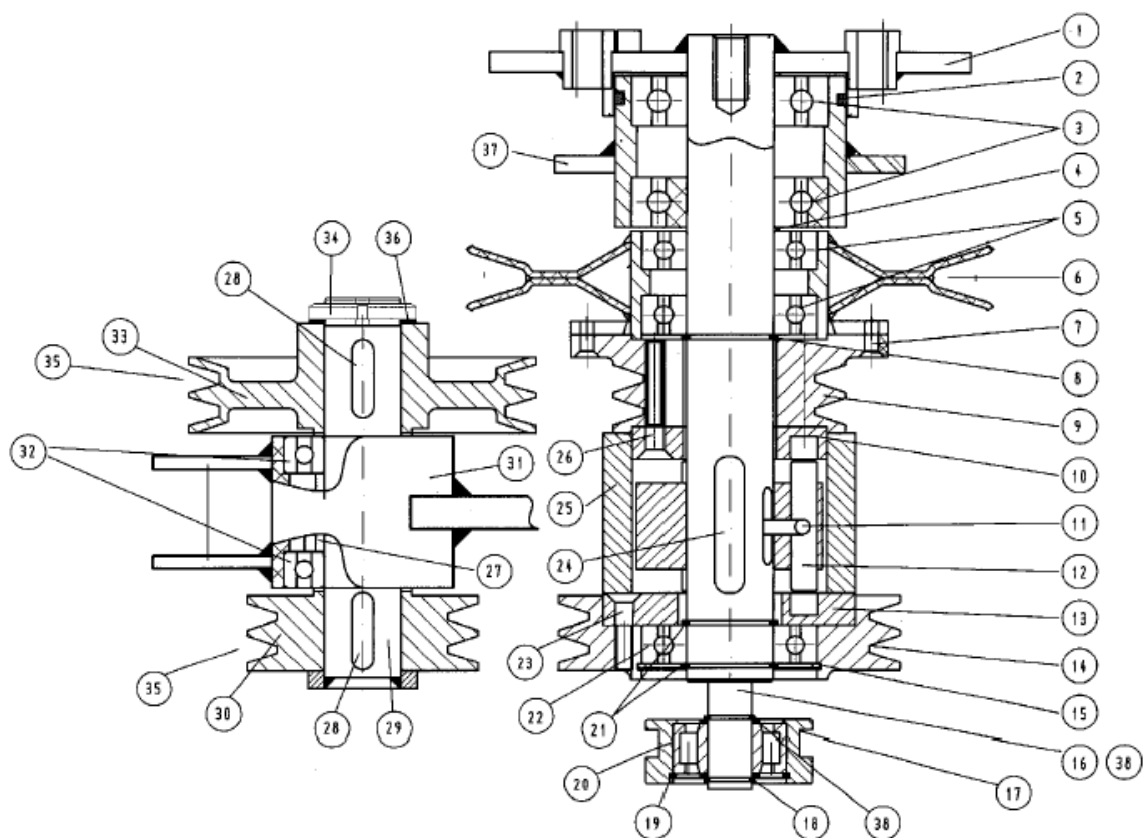
Spareparts

Group	Pos. no.	Item no.	Description
FL1	FL124a	03015120	Discs "A" 12-36 m Right
FL1	FL124b	03015204	Rondel (top disc for 6 vane kit) compl. with bolt and pipe. A2, F2 and K3
FL1	FL124c	03015020	Set of vanes 12-36m (12 pc.) with longlife Wolfram Carbid Coating
FL1	FL124d	03015003	Spread vane right ver.98-2 for 12-36 m a 12-36 m discs, A2, B2-B8, F2 and
FL1	FL124e	03015002	Spread vane left vers 98-2 for 12-36 m a 12-36 m discs, A2, B2-B8, F2 and
FL1	FL124ea	02004045	Bolt set stainless for spread vanes (12-
FL1	FL124f	01003014	Sets of bolts to suit rondels 12-36 m
FL1	FL125	01001103	PTO schaft w. overrun for (102) 6/6 910 mm (B2XL, B2ML, F2, F2X)
FL1	FL17c	03002307	Axle for bolt at tightening fixture 4500-1 headland gear

Spareparts

Group	Pos. no.	Item no.	Description
KA	ka01	03004019	Top for headland gear
KA	ka02	01016354	Piston ring 105x5
KA	ka03	01015001	Bearing 6308
KA	ka04	01003411	Distancering 41,5 x 55 x 1,5 mm For top for discs (SPC4500-2), headland
KA	ka05	01015012	Bearing 6208 (for inlex axel on SPC4500-1 from year 2001->)
KA	ka06	02007021	Pulley SPC 225/1 for headland gear
KA	ka07	01003018	Bolt, unbraco M8 x 25 mm (headland gear)
KA	ka08	01016256	Circlip Ø40a
KA	ka09	02007030	Pulley SPA 100-2, SPC4500-1 headlandgear (with 6 hole for M10x40 unbraco
KA	ka10	03004011	Clutchplate Ø90 headlandgear
KA	ka11	01003513	Steel pin Ø8x60 incl. 2 pcs M10 x 10 bolt. For 4500-1 and 2 headlandgear
KA	ka12	03004013	Clutch for 4500-1 headland gear
KA	ka13	03011083	Clutch plate Ø115 with 6 hole, 4500-2 headlandgear
KA	ka14	02007023	Pulley SPA 150-2 for headland gear
KA	ka15	01016258	Seegerring 80 i for headland gear
KA	ka16	03004014	Axel Ø20 mm, lenght 136,4 mm 4500-1 headland gear
KA	ka17	03004015	Wheel for 4500-1 and 2 headland gear
KA	ka18	01016259	Seegerring 20a x 1,75 for headland gear
KA	ka19	01016255	Seegerring 52i
KA	ka20	01015013	Bearing 3304 for Headland gear
KA	ka21	01016256	Circlip Ø40a
KA	ka22	01015012	Bearing 6208 (for inlex axel on SPC4500-1 from year 2001->)
KA	ka23	01003017	Nut, Umbraco M8x35 for headlandgear
KA	ka24	01003512	Not 10x8x56 for Headlandgear .
KA	ka25	01005224	PEH tube Ø110 x 10 x 74, 4500-1 headland
KA	ka26	01003016	Nut, unbraco M10x40 headlandgear
KA	ka27	03004016	Distancetube 1 1/4" x 36 for headlandgear
KA	ka28	01003502	Woodruff key 10mm
KA	ka29	03004017	Axle Ø35 mm for tightener on headland gear
KA	ka30	02007022	Pulley SPA 100-2 tightening fixture 12-28 Ø35 mm hole 37 mm hub lenght
KA	ka30a	02007025	Pulley SPA 150-2 tightening fixture 24-36 Ø35 mm hole, 37 mm hub lenght
KA	ka31	03004018	Housing for tightener, without bearings for headlandgear
KA	ka32	01015000	Bearing 6207
KA	KA33	02007029	Pulley SPA 150-2 for tightening fixture on SPC4500-1 headland gear
KA	ka34	01003404	Nut and lock washer "SKF" for top Ø35
KA	ka35	01010109	V-belt XPA 732 "KV23" for headland gear (4 pc. with 12-28 m headland gea
KA	ka35a	01010110	V-belt XPA 807 for headland gear 18-36 m (2 pc. XPA 807 and 2 pc. XPA 732
KA	ka36	01003410	Lockwascher MB7 for headlandgear
KA	ka37	03002142	Bearing tube right, short SPC4500-2
KA	ka38	01016017	Support ring Ø20/28 x 2 for wheel for headland gear
KA	ka39	03008891	Headland gear compl. for 4500-1 with fla 280 x 280 mm (without tightening
KA	ka40	03008849	Headland gear compl. for 4500-1 with fla 160 x 160 mm (without tightening

Group KA Headland gear in SPC 4500-1 spreadbox





Bredal A/S
Nimvej 1
DK-7120 Vejle Øst
Tel : (+45) 75895177
Mail : info@bredal.com
Web : www.bredal.com
iPaper : docs.bredal.com