

Manual

HC 4/8XYZ60L -V4

1 CONNECTION TO THE TRACTOR

Depending on the type of the crane's control valve, there can be two or three connection hoses that need to be connected to the tractor: Tank and pressure line.



2 REQUIREMENTS FOR CONNECTIONS

2.1 TANK LINE CONNECTION

Always connect the tank line first and disconnect it last! Tank line T should be connected to the oil tank through the tractor's return filter. For that it is possible to use a "-" connection on the double-acting hydraulic section (if "+" connection is used for pressure line P). If the tractor has a special connection for return line (which goes to the tank without passing the tractor's control valve) then it is recommended to use that to avoid the unnecessary oil heating. Model-specific information about the connections can be received from tractor's dealer.

2.2 PRESSURE LINE CONNECTION

For pressure line connection it is possible to use one of the double-acting control valve sections (connection "+" for pressure if "-" is used for tank line). It is recommended that the section has a flow fix option to get a steady flow from the hydraulic pump.

Model-specific information about the connections can be received from tractor's dealer.

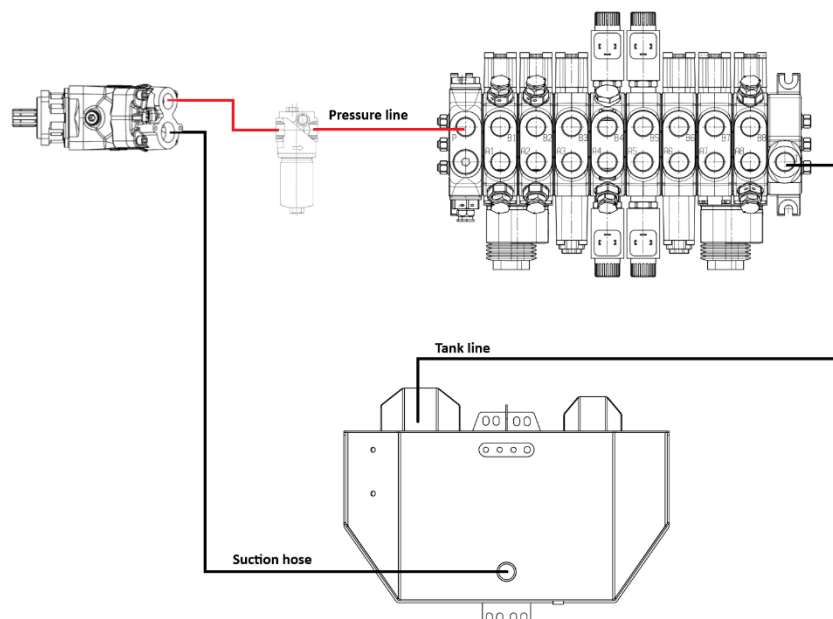
2.3 DRAIN LINE

The third (the smallest) hose is the drain line and this should be connected directly to the tank without additional pressure drop (NOT through filters or tractor's control valve etc.), in order to avoid damages to the control valve. Model-specific information for the drain line connection options can be received from the tractor's dealer.



2.4 CONNECTION WITH PUMP

In case the trailer is equipped with own hydraulic pump and tank, the connection of the hydraulics is the following.



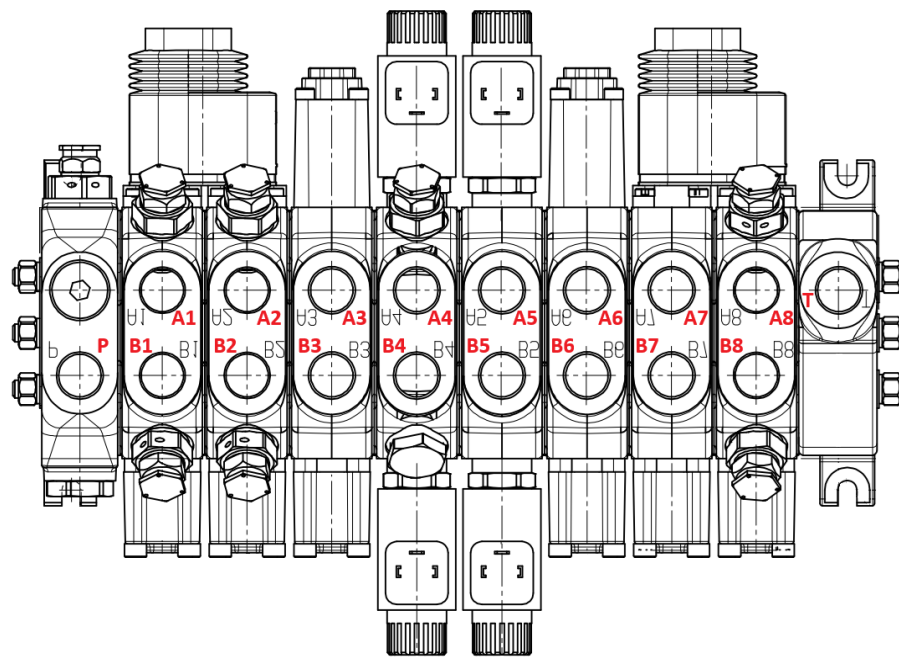
3 FLOWS AND PRESSURE SETTINGS

3.1 PRESSURE AND FLOW CHART

Recommended flow 30-60 l/min

Main valve	195	bar	Function
A1	190	bar	Slewing left
B1	190	bar	Slewing right
A2	210	bar	Extension up
B2	140	bar	Extension down
A3	NSV	bar	Left leg down
B3	NSV	bar	Left leg up
A4	80	bar	Telescope out
B4	NSV	bar	Telescope in
A5	NSV	bar	Grapple open
B5	NSV	bar	Grapple close
A6	NSV	bar	Right leg down
B6	NSV	bar	Right leg up
A7	NSV	bar	Rotator CCW
B7	NSV	bar	Rotator CW
A8	210	bar	Main boom down
B8	210	bar	Main boom up

NSV - no shock valve

CONTROL VALVE

4 MOVING THE CRANE

ON/OFF (60L)HC