

Manual

PARKER L90 – V41

1 CONNECTION TO THE TRACTOR

Depending on the type of the crane's control valve, there can be two or three connection hoses that need to be connected to the tractor: Tank line, LS line, pressure and drain line.



2 REQUIREMENTS FOR CONNECTIONS

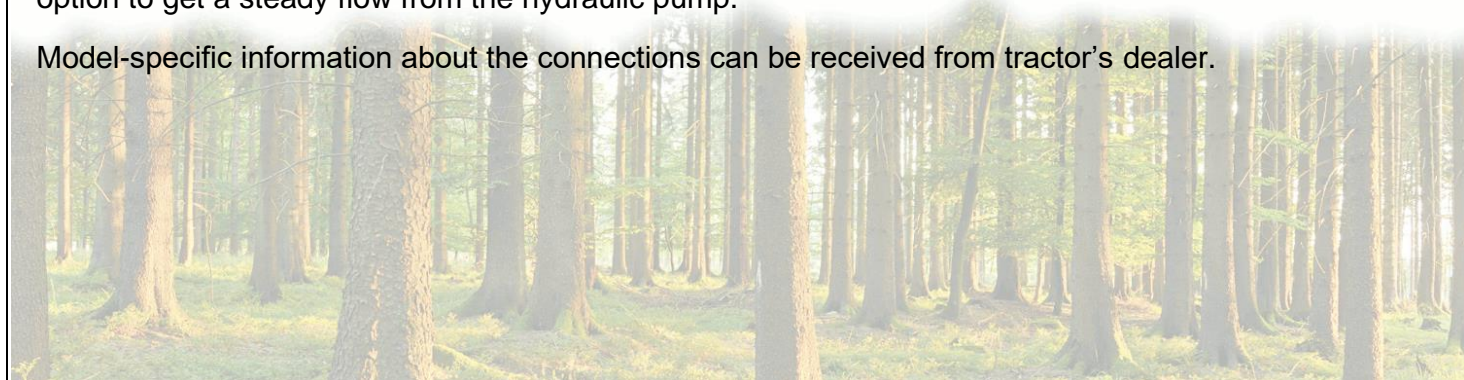
2.1 TANK LINE CONNECTION

Always connect the tank line first and disconnect it last! Tank line T should be connected to the oil tank through the tractor's return filter. For that it is possible to use a “-“connection on the double-acting hydraulic section (if “+” connection is used for pressure line P). If the tractor has a special connection for return line (which goes to the tank without passing the tractor's control valve) then it is recommended to use that to avoid the unnecessary oil heating. Model-specific information about the connections can be received from tractor's dealer.

2.2 PRESSURE LINE CONNECTION

For pressure line connection it is possible to use one of the double-acting control valve sections (connection “+” for pressure if “-“is used for tank line). It is recommended that the section has a flow fix option to get a steady flow from the hydraulic pump.

Model-specific information about the connections can be received from tractor's dealer.

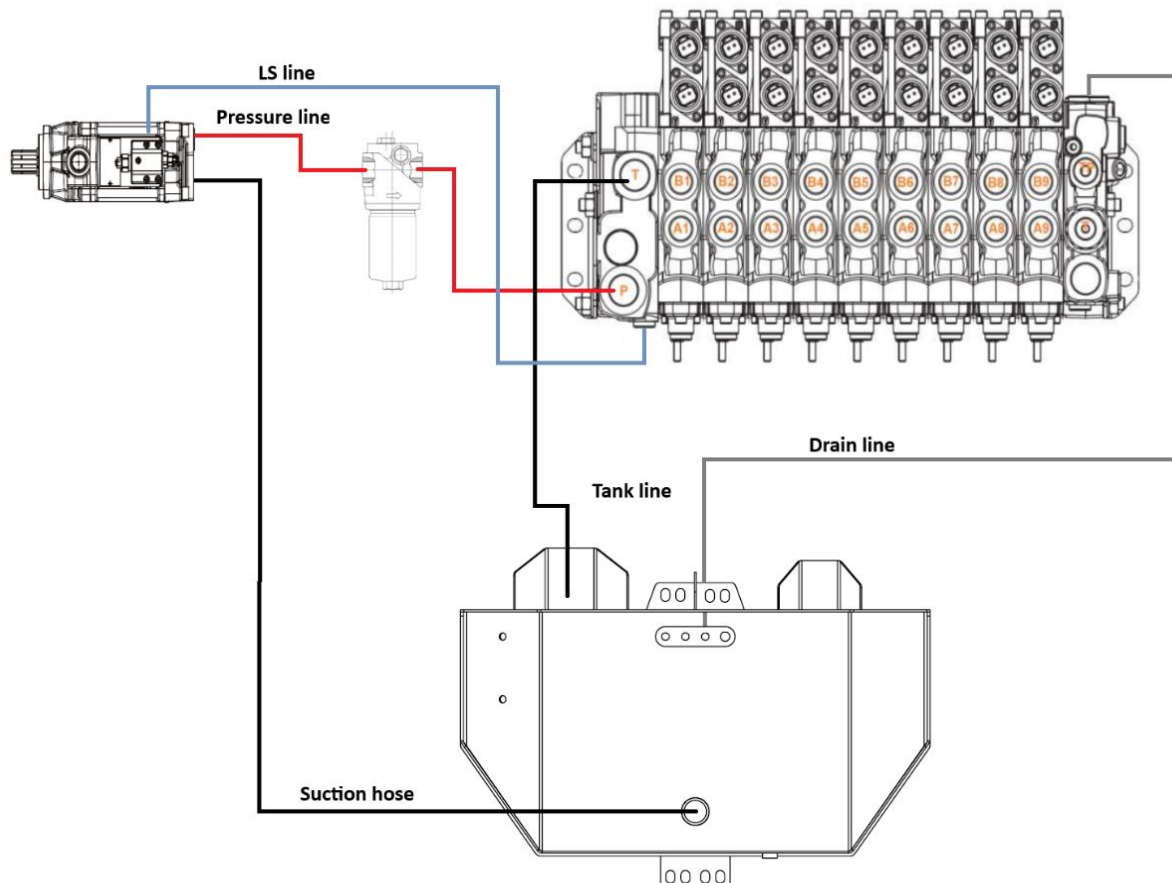


2.3 DRAIN LINE

The third (the smallest) hose is the drain line and this should be connected directly to the tank without additional pressure drop (NOT through filters or tractor's control valve etc.), in order to avoid damages to the control valve. Model-specific information for the drain line connection options can be received from the tractor's dealer.

2.4 CONNECTION WITH PUMP

In case the trailer is equipped with own hydraulic pump and tank, the connection of the hydraulics is the following.



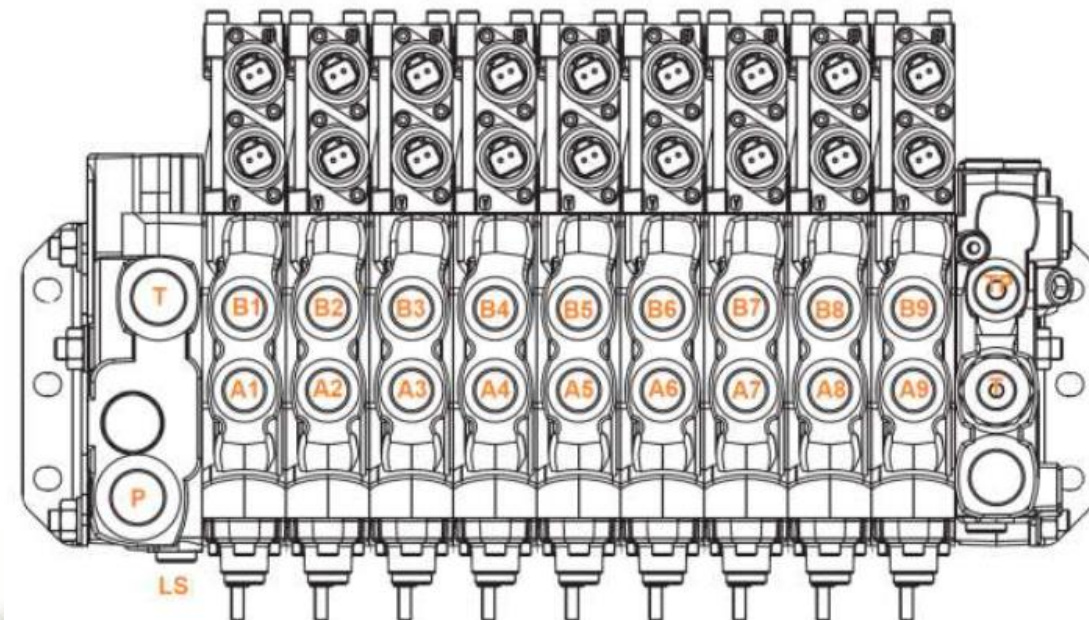
3 FLOWS AND PRESSURE SETTINGS

3.1 PRESSURE AND FLOW CHART

Main valve	225	bar	Function
A1	175	bar	Slewing right
B1	175	bar	Slewing left
A2	230	bar	Main boom up
B2	125	bar	Main boom down
A3	125	bar	Extension up
B3	250	bar	Extension down
A4	NSV	bar	Rotator CW
B4	NSV	bar	Rotator CCW
A5	230	bar	Telescope out
B5	230	bar	Telescope in
A6	NSV	bar	Grapple close
B6	NSV	bar	Grapple open
A7	NSV	bar	Left leg down
B7	NSV	bar	Left leg up
A8	NSV	bar	Right leg down
B8	NSV	bar	Right leg up

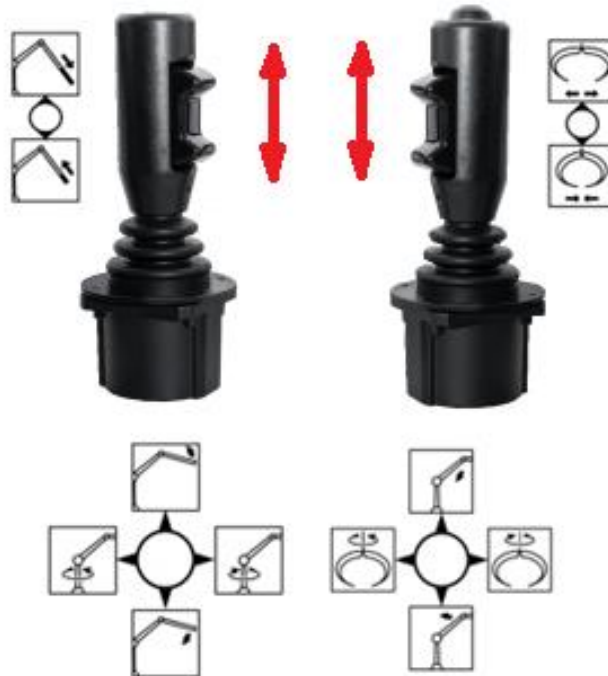
NSV - no shock valve

3.2 CONTROL VALVE



4 MOVING THE CRANE

4.1 XCRANE PLUS



When pressing the button (shown in the picture below) you can move the legs.

