

# Manual

## V26 Parker P70

### 1 CONNECTION TO THE TRACTOR

Depending on the type of the crane's control valve, there can be two or three connection hoses that need to be connected to the tractor: Tank line, pressure and drain line.



### 2 REQUIREMENTS FOR CONNECTIONS

#### 2.1 TANK LINE CONNECTION

Always connect the tank line first and disconnect it last! Tank line T should be connected to the oil tank through the tractor's return filter. For that it is possible to use a “-“connection on the double-acting hydraulic section (if “+” connection is used for pressure line P). If the tractor has a special connection for return line (which goes to the tank without passing the tractor's control valve) then it is recommended to use that to avoid the unnecessary oil heating. Model-specific information about the connections can be received from tractor's dealer.

#### 2.2 PRESSURE LINE CONNECTION

For pressure line connection it is possible to use one of the double-acting control valve sections (connection “+” for pressure if “-“is used for tank line). It is recommended that the section has a flow fix option to get a steady flow from the hydraulic pump.

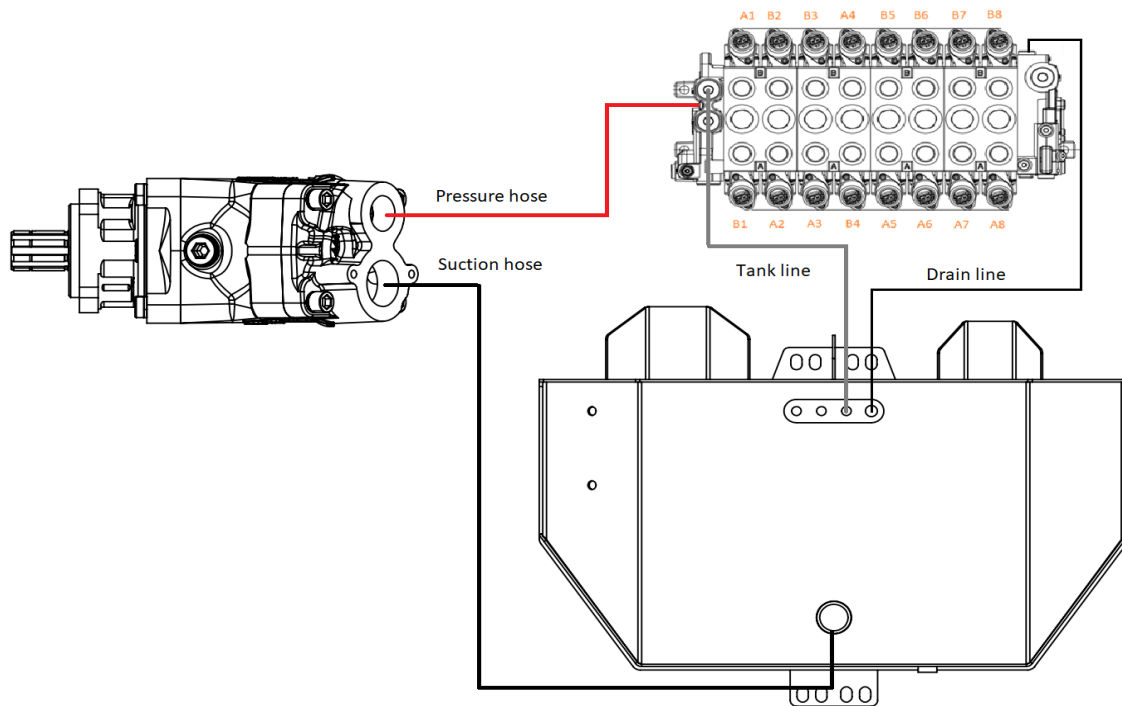
Model-specific information about the connections can be received from tractor's dealer.

#### 2.3 DRAIN LINE

The third (the smallest) hose is the drain line and this should be connected directly to the tank without additional pressure drop (NOT through filters or tractor's control valve etc.), in order to avoid damages to the control valve. Model-specific information for the drain line connection options can be received from the tractor's dealer.

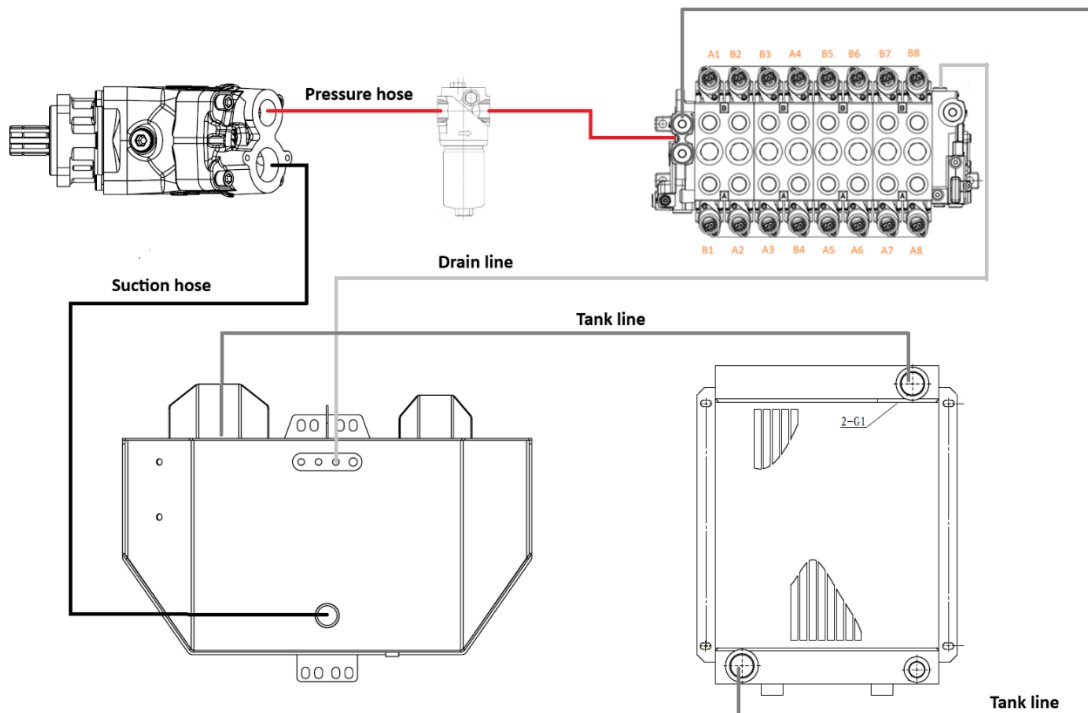
## 2.4 CONNECTION WITH PUMP

In case the trailer is equipped with own hydraulic pump and tank, the connection of the hydraulics is the following.



## 2.5 CONNECTION WITH PUMP, HPF AND COOLER

In case the trailer is equipped with own hydraulic pump, tank, HPF filter and cooler. The connection of the hydraulics is the following.

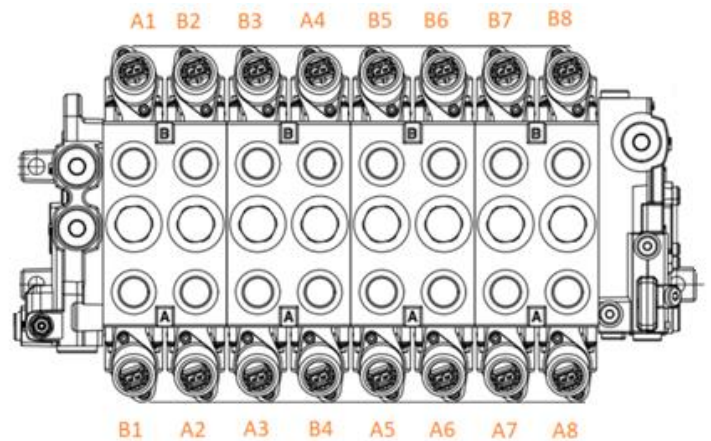


## 3 FLOWS AND PRESSURE SETTINGS

### 3.1 PRESSURE AND FLOW CHART

Main valve	200 (HP 225)	bar	Function
A1	175	bar	Slewing left
B1	175	bar	Slewing right
A2	210	bar	Main boom up
B2	100	bar	Main boom down
A3	125	bar	Extension down
B3	230	bar	Extension up
A4	210	bar	Rotator CCW
B4	210	bar	Rotator CW
A5	210	bar	Telescope out
B5	210	bar	Telescope in
A6	210	bar	Grapple close
B6	210	bar	Grapple open
A7	210	bar	Left leg down
B7	210	bar	Left leg up
A8	210	bar	Right leg down
B8	210	bar	Right leg up

### 3.2 CONTROL VALVE



## 4 MOVING THE CRANE

### 4.1 LC6 MINI-JOYSTICKS

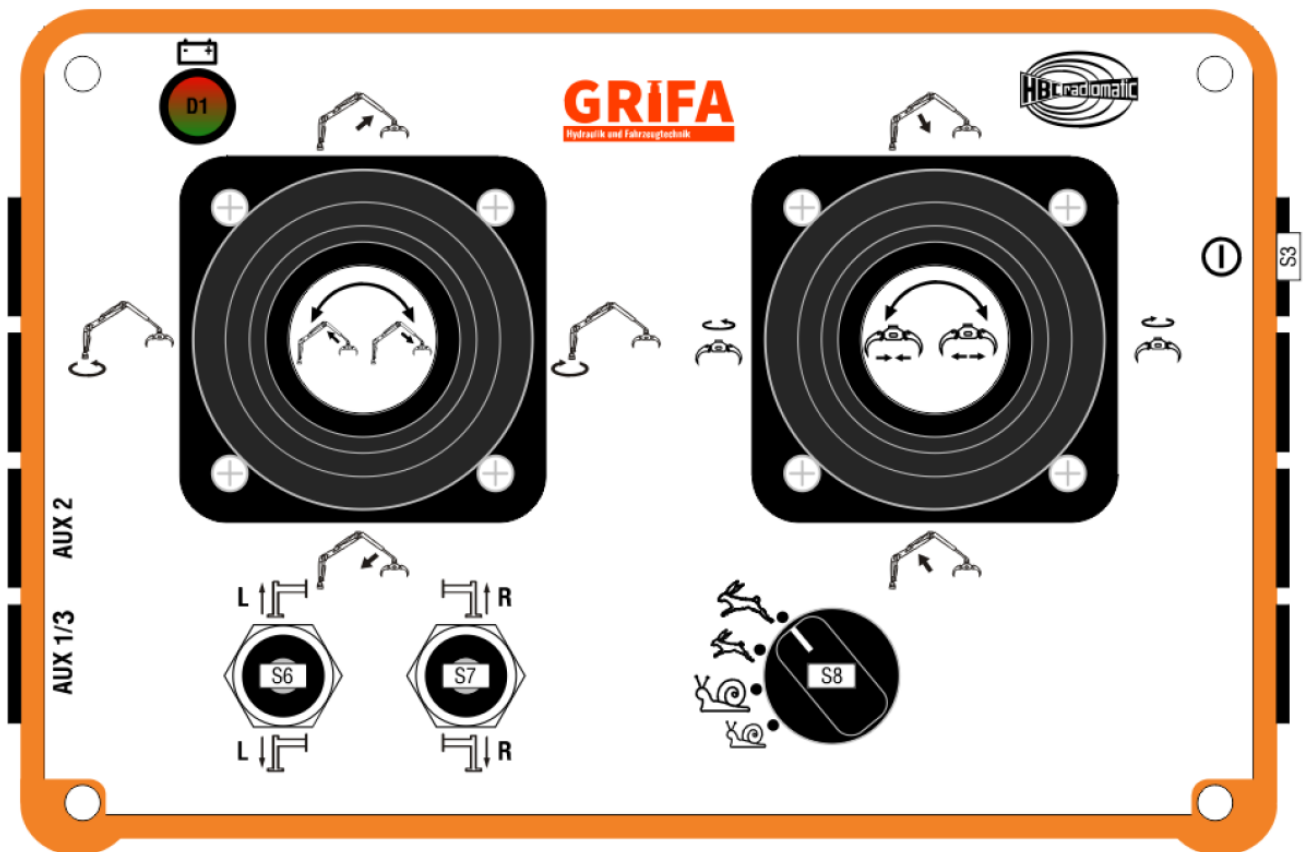


### 4.2 LC5 JOYSTICKS





### 4.3 GRIFA HBC



### 4.4 AUTEC

